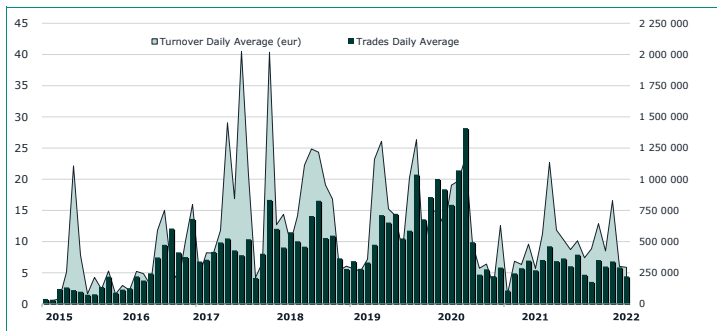


**ATFund Statistics**
**January 2022**
**TRADING EVOLUTION**

**MAIN INDICATORS**
**LISTED FUNDS**

	LISTED END OF MONTH	AUM in MT	
		eur m 30/12/2021	eur m 31/01/2022
<b>CORPORATE AND GOV. BOND</b>	23	50.48	47.14
<b>DEVELOPED MARKETS</b>	22	53.71	52.68
<b>EMERGING</b>	1	0.37	0.37
<b>STYLE</b>			
<b>OTHERS</b>	40	385.45	378.56
<b>TOTAL</b>	<b>86</b>	<b>490.02</b>	<b>478.75</b>

**TRADING**

	DECEMBER 2021	JANUARY 2022
	Turnover eur m	Turnover eur m
<b>CORPORATE AND GOV. BOND</b>	1.1	3.7
<b>DEVELOPED MARKETS</b>	1.2	0.2
<b>EMERGING</b>	0.0	0.0
<b>STYLE</b>		
<b>OTHERS</b>	4.0	2.3
<b>TOTAL</b>	<b>6.31</b>	<b>6.16</b>

**MOST TRADED IN THE MONTH BY TURNOVER**

Name	Trading Code	ISIN	TURNOVER	
			eur m	% TOT
1 ACOMEA BREVE TERMINE CLASSE Q2	ACABRT	IT0005090870	1.49	24.2%
2 PHARUS LIQUIDITY CLASS Q	PHSLQ	LU1136401384	1.05	17.0%
3 COMPAM FUND FLEXIBLE BOND CLASSE Q	COMFB0	LU1472302576	0.83	13.4%
4 OPEN CAPITAL TOTAL RETURN CLASSE L	OCPTR	IT0005279515	0.55	8.9%
5 PHARUS ALGO FLEX CLASS Q	PHSAFQ	LU1136402788	0.49	8.0%
6 OPEN CAPITAL PROFESSIONAL	OCPP1	IT0005279754	0.34	5.5%
7 COMPAM FUND - SB BOND CLASSE Q	COMSBB	LU1275426432	0.30	4.8%
8 ATOMO PLAB FLEX ABSOLUTE FUND - CLASSE L	ATMPLF	LU1391065551	0.28	4.5%
9 NEW MILLEN MULTI ASSET OPPORTUN CLASSE L	NMMAO	LU1363165751	0.24	3.9%
10 PHARUS ASIAN NICHES	PHSAN	LU1867072735	0.13	2.1%

**MOST TRADED IN THE YEAR BY TURNOVER**

Name	Trading Code	ISIN	TURNOVER	
			eur m	% TOT
1 ACOMEA BREVE TERMINE CLASSE Q2	ACABRT	IT0005090870	1.49	24.2%
2 PHARUS LIQUIDITY CLASS Q	PHSLQ	LU1136401384	1.05	17.0%
3 COMPAM FUND FLEXIBLE BOND CLASSE Q	COMFB0	LU1472302576	0.83	13.4%
4 OPEN CAPITAL TOTAL RETURN CLASSE L	OCPTR	IT0005279515	0.55	8.9%
5 PHARUS ALGO FLEX CLASS Q	PHSAFQ	LU1136402788	0.49	8.0%
6 OPEN CAPITAL PROFESSIONAL	OCPP1	IT0005279754	0.34	5.5%
7 COMPAM FUND - SB BOND CLASSE Q	COMSBB	LU1275426432	0.30	4.8%
8 ATOMO PLAB FLEX ABSOLUTE FUND - CLASSE L	ATMPLF	LU1391065551	0.28	4.5%
9 NEW MILLEN MULTI ASSET OPPORTUN CLASSE L	NMMAO	LU1363165751	0.24	3.9%
10 PHARUS ASIAN NICHES	PHSAN	LU1867072735	0.13	2.1%

**What is ATFund (@Fund)**

ATFund is a multilateral trading facilities (MTF) for open-end funds.

Clients can enter buy and sell orders between 8:00 a.m. and 10:55 a.m. Orders must indicate the quantity only.

Between 10:55 and 11 a.m. only the Appointed Intermediary can insert orders to execute the imbalance between buy and sell quantities. Trades are concluded within one minute after 11 am.

Contracts concluded at T are valued the following day (T+1) with the NAV (in Euro) as of day T provided by the issuers of listed funds by the cut-off time (5:00 pm).

Trades, valued at NAV, are settled in Monte Titoli the third day following the conclusion of contracts (T+3).

**News:**

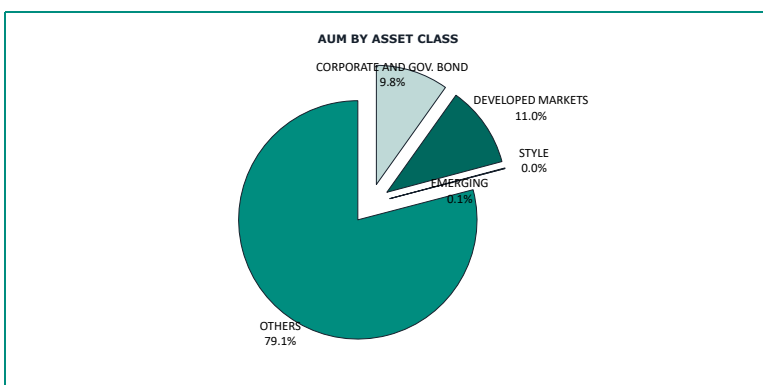
ATFund AUM reached €478.75 m

Note: ATFund figures are included in the ETFplus until September 2018

TURNOVER		DECEMBER 2021		JANUARY 2022			
		Trades	Turnover eur m	Trades	% TOT	Turnover eur m	% TOT
0	20 000	78	0.52	61	65.6%	0.39	6.4%
20 000	50 000	19	0.65	11	11.8%	0.33	5.4%
50 000	100 000	10	0.71	7	7.5%	0.50	8.1%
100 000	500 000	14	2.58	10	10.8%	1.70	27.6%
500 000		2	1.84	4	4.3%	3.24	52.6%
<b>TOTAL</b>		<b>123</b>	<b>6.30</b>	<b>93</b>		<b>6.16</b>	

**FOCUS**

FUNDS WITH HIGHEST TURNOVER				
MONTH	NAME	TRADING CODE	ISIN	EUR
JANUARY 2021	BA+ EIGER - CLASSE Q	BAECQ	IT0005114530	2 523 100
FEBRUARY	ACOMEA LIQUIDITA' CLASSE Q2	ACALIQ	IT0005090854	5 683 537
MARCH	NEW MILLENNIUM TOTAL RETURN FLEXIBLE	NMTRF	LU2249747283	7 996 524
APRIL	OPEN CAPITAL TOTAL RETURN CLASSE L	OCPTR	IT0005279515	4 149 652
MAY	OPEN CAPITAL PROFESSIONAL	OCPEI	IT0005279754	3 707 709
JUNE	OPEN CAPITAL TOTAL RETURN CLASSE L	OCPTR	IT0005279515	2 270 522
JULY	NEW MILLEN MULTI ASSET OPPORTUN CLASSE L	NMMAO	LU1363165751	2 505 357
AUGUST	NEW MILLEN MULTI ASSET OPPORTUN CLASSE L	NMMAO	LU1363165751	2 695 057
SEPTEMBER	OPEN CAPITAL PROFESSIONAL	OCPEI	IT0005279754	3 008 863
OCTOBER	OPEN CAPITAL TOTAL RETURN CLASSE L	OCPTR	IT0005279515	1 697 558
NOVEMBER	ACOMEA BREVE TERMINE CLASSE Q2	ACABRT	IT0005090870	3 355 953
DECEMBER	FINLABO DYNAMIC EQUITY - CLASSE L	FINLDE	LU1397788552	986 300
	Jan-22 ACOMEA BREVE TERMINE CLASSE Q2	ACABRT	IT0005090870	1 487 794



**MAIN INDICATORS - DEVELOPED MARKETS**

Name	Trading Code	ISIN	30/12/2021	Reference Price		Var %	JANUARY 2022	
				31/01/2022			trades	Turnover €
1 BA+ EIGER - CLASSE Q	BAECQ	IT0005114530	126.565	124.485	-1.6%	2	11 397	
2 ACOMEA AMERICA CLASSE Q2	ACAAME	IT0005091142	29.957	30.03	0.2%	-	-	
3 ACOMEA ASIA PACIFICO CLASSE Q2	ACAAPA	IT0005091183	8.116	7.987	-1.6%	2	25 605	
4 ACOMEA EUROPA CLASSE Q2	ACAPEP	IT0005091167	20.016	20.017	0.0%	-	-	
5 ACOMEA GLOBALE CLASSE Q2	ACAGLO	IT0005091100	18.315	18.267	-0.3%	2	107 759	
6 ACOMEA PMITALIA ESG CLASSE Q2	ACAITA	IT0005091233	33.255	32.155	-3.3%	-	-	
7 ALESSIA - VOLCOR BETA ZERO CLASS Q	AVBZ01	LU1238726811	114	105.37	-7.6%	-	-	
8 ATOMO MADE IN ITALY FUND - CLASSE L	ATMMIF	LU1391064828	208.31	196.53	-5.7%	-	-	
9 COMPAM ACTIVE GLOBAL LONG SHORT	COMAEE	LU1275425897	99.812	97.358	-2.5%	-	-	
10 COMPAM FUND - SB EQUITY CLASSE Q	COMSBE	LU1275426275	158.947	146.295	-8.0%	-	-	
11 COMPAM FUND ACORO GLOB EQUITY LONG-ONLY	COMACO	LU2339391539	-	-	-	-	-	
12 COMPAM FUND ACTIVE GLOBAL EQUITY	COMGEQ	LU1783934646	-	-	-	-	-	
13 FINLABO DYNAMIC EQUITY - CLASSE L	FINLDE	LU1397788552	98.81	100.52	1.7%	-	-	
14 NEW MILLENNIUM EURO EQUITIES CLASSE L	NMEE	LU1148873406	78.39	75.31	-3.9%	-	-	
15 NEW MILLENNIUM GLOBAL EQUITIES EUR HED L	NMGE	LU1148873588	141.09	134.25	-4.8%	-	-	
16 PHARUS GLOBAL VALUE EQUITY CLASS Q	PSGVQ	LU1371515534	155.52	148.26	-4.7%	-	-	
17 PHARUS GLOBAL VALUE EQUITY CLASS QH	PSGVQH	LU1371515880	150.69	142.92	-5.2%	-	-	
18 PHARUS GLOBAL VALUE EQUITY CLASS QHD	PSGVQHD	LU1574104151	122.25	115.97	-5.1%	-	-	
19 PHARUS INTERNATION EQUITY QUANT CLASS Q	PHSIEQ	LU1136402192	131.13	125.16	-4.6%	-	-	
20 PHARUS SICAV ELECTRIC MOBILITY NICHES	PHSEMN	LU1867072495	165.98	162.72	-2.0%	4	16 687	
21 PHARUS SICAV EUROPE TOTAL RETURN CLASS Q	PSEAFQ	LU1437803767	119.1	118.76	-0.3%	-	-	
22 PHARUS SICAV NEXT REVOLUTION CLASS Q	PHSVQ	LU1136401970	157.36	146.55	-6.9%	-	-	

## MAIN INDICATORS - CORPORATE AND GOV. BOND

Name	Trading Code	ISIN	30/12/2021	Reference Price 31/01/2022	Var %	Trades	JANUARY 2022 Turnover C
1 ACOMEA 12 MESI CLASSE Q2	ACALIQ	IT0005090854	8.619	8.504	-1.3%	5	17.643
2 ACOMEA BREVE TERMINE CLASSE Q2	ACABRT	IT0005090870	16.701	16.4	-1.8%	5	1.487.794
3 ACOMEA EUROBLAZIONARIO CLASSE Q2	ACABUO	IT0005090896	20.704	20.161	-2.6%	1	2.003
4 ACOMEA PERFORMANCE CLASSE Q2	ACAPER	IT0005090912	23.887	23.562	-1.4%	-	-
5 AISM LOW VOLATILITY FUND - E PLUS	AISMLV	LU1280406684	83.26	80.64	-3.1%	-	-
6 BASE INV BONDS VALUE CLASS EUR L	BONVAL	LU1242466289	123.04	123.91	0.7%	-	-
7 COMPAM FUND - SB BOND CLASSE Q	COMSBB	LU1275426432	107.872	107.68	-0.2%	1	298.510
8 COMPAM FUND FLEXIBLE BOND CLASSE Q	COMFBO	LU1472302576	104.415	103.213	-1.2%	1	825.904
9 INVESTIMENTI SOSTENIBILI LIFE GATE	LGINVS	IT0005215709	108.367	105.902	-2.3%	-	-
10 NEW MILLEN EVERG GL HI YLD BOND CLASSE L	NMEGH	LU1363165918	-	-	-	-	-
11 NEW MILLENNIUM AUGUST HIGH QUALIT BOND L	NMHQB	LU1148873745	161.62	161.8	0.1%	-	-
12 NEW MILLENNIUM AUGUSTUM CORPORATE BOND L	NMCB	LU1148874396	246.23	244.31	-0.8%	-	-
13 NEW MILLENNIUM EURO BONDS SHORT TERM L	NMEBST	LU1148873661	136.04	136.12	0.1%	-	-
14 NEW MILLENNIUM EX EUR HIGH QUALIT BOND L	NMEXHQ	LU1148873828	111.12	111.64	0.4%	-	-
15 NEW MILLENNIUM INFLAT LINK BOND EUROP L	NMILB	LU1148874040	113.68	114.05	0.3%	-	-
16 NEW MILLENNIUM ITALIAN DIVERSIF BOND L	NMIDB	LU1148874479	145.25	143.54	-1.2%	1	12.417
17 NEW MILLENNIUM LARGE EUROPE CORPORATE L	NMLEC	LU1148874123	145.29	144.02	-0.9%	-	-
18 PHARUS BOND OPPORTUNITIES CLASS Q	PHSBOQ	LU1136401111	101.76	101.22	-0.5%	-	-
19 PHARUS LIQUIDITY CLASS Q	PHSLQ	LU1136401384	103.25	102.74	-0.5%	2	1.048.965
20 PHARUS TARGET CLASS Q	PHSTQ	LU1136402432	73.7	71.77	-2.6%	-	-
21 FLURIMA GLOBAL STAR RETURN FUND A LISTED	POGSRF	IE0082228401	-	-	-	-	-
22 QSF - EUROPEAN HIGH YIELD BOND Q ACC	QSFHY	LU2264552642	100.84	98.96	-1.9%	-	-
23 VG SICAV GLOBAL BOND CLASSE L	VGGIRD	LU1501204389	-	-	-	-	-

## MAIN INDICATORS - EMERGING, STYLE AND OTHERS

Name	Trading Code	ISIN	30/12/2021	Reference Price 31/01/2022	Var %	Trades	JANUARY 2022 Turnover C
1 8A+ LATEMAR - CLASSE Q	SALCQ	IT0005114522	114.504	113.182	-1.2%	-	-
2 ACOMEA PAESI EMERGENTI CLASSE Q2	ACAPEM	IT0005091126	11.789	11.703	-0.7%	1	533
3 ACOMEA PATRIMONIO AGGRESSIVO CLASSE Q2	ACAAGG	IT0005091084	5.328	5.324	-0.1%	1	2.120
4 ACOMEA PATRIMONIO DINAMICO CLASSE Q2	ACADIN	IT0005091068	6.569	6.548	-0.3%	-	-
5 ACOMEA PATRIMONIO ESENTE CLASSE Q2	ACAESE	IT0005252801	7.043	6.966	-1.1%	2	3.986
6 ACOMEA PATRIMONIO PRUDENTE CLASSE Q2	ACAPRU	IT0005091019	6.701	6.607	-1.4%	-	-
7 ALESSIA - ABSOLUTE RETURN MACRO CLASS Q	AARM01	LU1238726654	107.88	108.24	0.3%	-	-
8 AMAGIS DYNAMIC ALLOC TOT RET FUND L1 EUR	ADA113	MT7000015665	103.7751	103.7198	-0.1%	-	-
9 AQA COLOMBO EXTRA RETURN FUND CLASS D	CXR	MT7000024006	107.7224	108.3693	0.6%	-	-
10 ATOMO CARPINUS - CLASSE L	ATMCAR	LU1391065718	-	-	-	-	-
11 ATOMO GLOBAL RETURN - CLASSE L	ATMGLR	LU1391065395	92.18	89.89	-2.5%	1	4.787
12 ATOMO PLAB FLEX ABSOLUTE FUND - CLASSE L	ATMPLF	LU1391065551	105.7	103.7	-1.9%	2	278.775
13 BASE INV FLEX LOW RISK EXPOS CLASS EUR L	FLEXLD	LU1242466875	112.87	113.41	0.5%	-	-
14 COMPAM FUND - SB FLEXIBLE CLASSE Q	COMSFB	LU1275426358	105.87	103.663	-1.3%	-	-
15 COMPAM FUND GLOBAL FLEXIBLE BLEND	COMGFB	LU1769738383	100.631	99.442	-1.2%	-	-
16 COMPAM FUND SB CONVEX CLASSE Q	COMSBC	LU1468873846	123.912	118.2	-4.6%	1	1.959
17 COMPAM GLOBAL DIVERSIFIED CLASSE Q	COMGDO	LU1275426515	103.975	101.999	-1.9%	-	-
18 FCS FLEX ABLE GROWTH PLUS FUND CLASS B	FLEXAP	LU1720052098	-	-	-	-	-
19 INTERMONTE FLEXIBLE EUROPE	INTE	LU1688213104	11.31	10.98	-2.9%	2	10.397
20 NEW MILLEN MULTI ASSET OPPORTUN CLASSE L	NMMAO	LU1363165751	110.07	108.35	-1.6%	6	237.912
21 NEW MILLENNIUM AUGUSTUM MARKET TIMING L	NMMT	LU1148874636	122.74	121.36	-1.1%	-	-
22 NEW MILLENNIUM BALANC WORLD CONSERVAT L	NMBWC	LU1148874552	166.2	162.25	-2.4%	-	-
23 NEW MILLENNIUM PIR BILANCIATO SIST ITA L	NMPBSI	LU1602468800	111.1	107.73	-3.0%	-	-
24 NEW MILLENNIUM TOTAL RETURN FLEXIBLE	NMTRF	LU2249747283	128.07	127.33	-0.6%	-	-
25 NEW MILLENNIUM VOLACTIVE CLASSE L	NMVOL	LU1148874800	109.32	106.3	-2.8%	-	-
26 OPEN CAPITAL PROFESSIONAL	OCPPI	IT0005279754	106.757	101.817	-4.6%	9	336.766
27 OPEN CAPITAL TOTAL RETURN CLASSE L	OCPTR	IT0005279515	114.338	111.859	-2.2%	17	546.758
28 PHARUS ALGO FLEX CLASS Q	PHSAFQ	LU1136402788	102.1	97.26	-4.7%	10	492.385
29 PHARUS ASIAN NICHES	PHSAN	LU1867072735	124.64	124.39	-0.2%	5	126.705
30 PHARUS SICAV - BASIC FUND Q	HPSBAS	LU1176781729	29.79	28.02	-5.9%	4	44.759
31 PHARUS SICAV - BEST REGULATED COMPANIES	PHSTED	LU1868872802	106.14	102.02	-3.9%	-	-
32 PHARUS SICAV_CONSERVATIVE	PHSARQ	LU1136401467	112.62	110.81	-1.6%	-	-
33 PHARUS TREND PLAYER CLASS Q	PHSTPQ	LU1253867847	195.56	185.43	-5.2%	-	-
34 FLURIMA STRATEGY PORTFOLIO A LISTED	PPSPDF	IE008VDPXK98	11.959	10.973	-8.2%	-	-
35 QSF - FAMILY GLOBAL VALUE EUR Q ACC	QSFQV	LU2264552998	101.23	99.22	-2.0%	-	-
36 SELECTRA J. LAMARCK BIOTECH CLASS D	SELJLB	LU1246176264	146.51	135.63	-7.4%	2	6.105
37 SELECTRA J. LAMARCK PHARMA CLASS D	SELJLP	LU1246176850	112.89	110.29	-2.3%	-	-
38 SUMUS STRATEGIC FUND CLASSE Q EUR	HPSOYN	LU1176783774	11.57	11.38	-1.6%	3	92.929
39 TIMEO BEST GLOBAL MANAGERS FLEX EQUITY	TNSBEQ	LU1850436491	103.5	99.61	-3.8%	-	-
40 UCAPITAL MULTI ALPHA PLUS FUND A LISTED	PMALPF	IE008VH95999	8.208	8.208	0.0%	-	-
41 VARENNE VALEUR QUOTA IT	VVAITA	FR0013216991	143.51	134.36	-6.4%	1	118.563

## Markets Analysis

Piazza degli Affari, 6 - 20123 Milano  
T +39 02 724261 | Fax +39 02 8646.4323  
e-mail: markets\_analysis@borsaitaliana.it  
www.borsaitaliana.it

This publication is for information purposes only and is not a recommendation to engage in investment activities. This publication is provided "as is" without representation or warranty of any kind. Whilst all reasonable care has been taken to ensure the accuracy of the content, Euronext does not guarantee its accuracy or completeness. Euronext will not be held liable for any loss or damages of any nature ensuing from using, trusting or acting on information provided. No information set out or referred to in this publication shall form the basis of any contract. The creation of rights and obligations in respect of financial products that are traded on the exchanges operated by Euronext's subsidiaries shall depend solely on the applicable rules of the market operator. All proprietary rights and interest in or connected with this publication shall vest in Euronext. No part of it may be redistributed or reproduced in any form without the prior written permission of Euronext. Euronext disclaims any duty to update this information. Euronext refers to Euronext N.V. and its affiliates. Information regarding trademarks and intellectual property rights of Euronext is located at [www.euronext.com/terms-use](http://www.euronext.com/terms-use).

