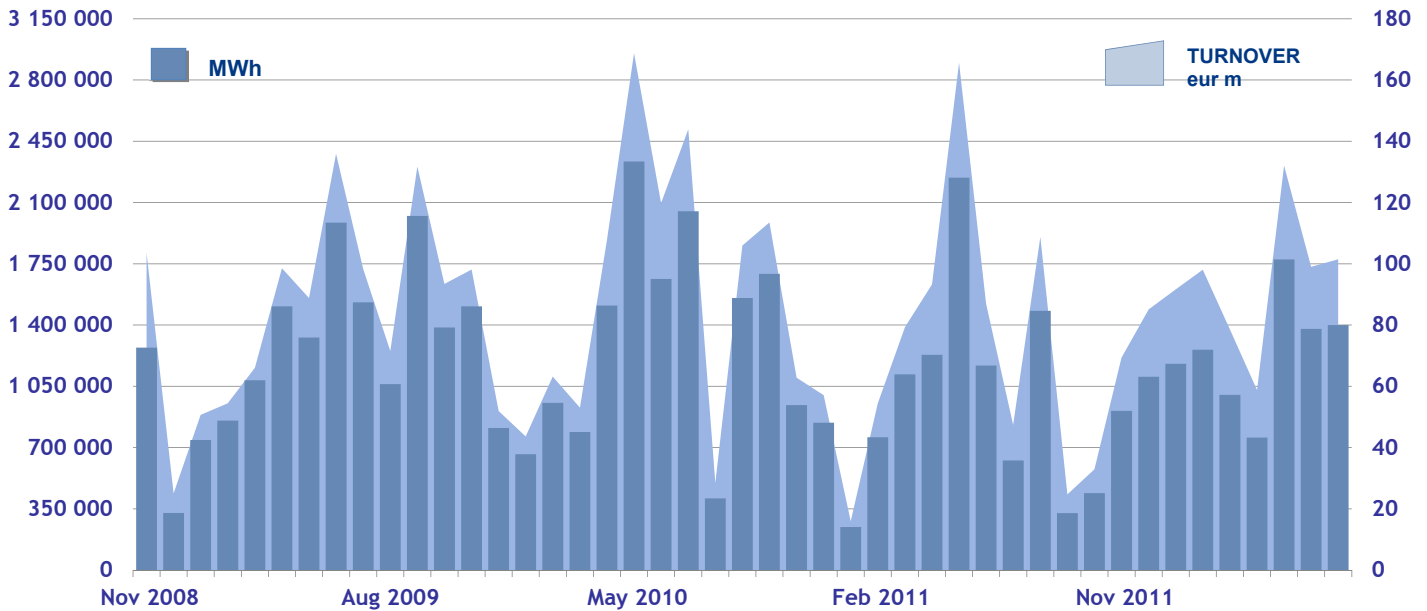


IDEX MONTHLY TURNOVER



MONTHLY FUTURES VOLUME

DATE	SERIES NAME	SERIES CODE	MID_PRICE	STANDARD CONTRACTS	TRADES	MWh
06/07/2012	Aug 2012	IDEBM2H	76.50	10	1	7 440
27/07/2012	Aug 2012	IDEBM2H	77.10	10	1	7 440

QUARTERLY FUTURES VOLUME

DATE	SERIES NAME	SERIES CODE	MID_PRICE	STANDARD CONTRACTS	TRADES	MWh
02/07/2012	Q4 2012	IDEBQ24	75.95	2	1	4 418
03/07/2012	Q4 2012	IDEBQ24	76.78	20	2	44 180
13/07/2012	Q4 2012	IDEBQ24	77.05	20	2	44 180
25/07/2012	Q4 2012	IDEBQ24	77.10	5	1	11 045
26/07/2012	Q4 2012	IDEBQ24	77.15	5	1	11 045
27/07/2012	Q4 2012	IDEBQ24	77.20	5	1	11 045
17/07/2012	Q1 2013	IDEBQ31	75.40	5	1	10 795
19/07/2012	Q1 2013	IDEBQ31	75.75	5	1	10 795
12/07/2012	Q3 2013	IDEBQ33	71.00	5	1	11 040

YEARLY FUTURES VOLUME

DATE	SERIES NAME	SERIES CODE	MID_PRICE	STANDARD CONTRACTS	TRADES	MWh
02/07/2012	Y 2013	IDEBY3L	70.20	10	2	87 600
04/07/2012	Y 2013	IDEBY3L	71.25	10	2	87 600
05/07/2012	Y 2013	IDEBY3L	72.05	15	2	131 400
06/07/2012	Y 2013	IDEBY3L	71.65	5	1	43 800
09/07/2012	Y 2013	IDEBY3L	71.85	5	1	43 800
11/07/2012	Y 2013	IDEBY3L	71.85	5	1	43 800
12/07/2012	Y 2013	IDEBY3L	71.40	5	1	43 800
13/07/2012	Y 2013	IDEBY3L	71.93	15	2	131 400
16/07/2012	Y 2013	IDEBY3L	72.20	5	1	43 800
17/07/2012	Y 2013	IDEBY3L	72.93	25	5	219 000
18/07/2012	Y 2013	IDEBY3L	72.65	5	1	43 800
19/07/2012	Y 2013	IDEBY3L	73.00	5	1	43 800
23/07/2012	Y 2013	IDEBY3L	71.75	20	4	175 200
27/07/2012	Y 2013	IDEBY3L	71.90	5	1	43 800
30/07/2012	Y 2013	IDEBY3L	71.80	5	1	43 800

MONTHLY FUTURES

DATE	SERIES NAME	SERIES CODE	CLOSING_PRICE
02/07/2012	Aug 2012	IDEBM2H	77.25
03/07/2012	Aug 2012	IDEBM2H	77.00
04/07/2012	Aug 2012	IDEBM2H	77.00
05/07/2012	Aug 2012	IDEBM2H	77.00
06/07/2012	Aug 2012	IDEBM2H	77.00
09/07/2012	Aug 2012	IDEBM2H	77.00
10/07/2012	Aug 2012	IDEBM2H	77.00
11/07/2012	Aug 2012	IDEBM2H	77.00
12/07/2012	Aug 2012	IDEBM2H	77.00
13/07/2012	Aug 2012	IDEBM2H	77.00
16/07/2012	Aug 2012	IDEBM2H	77.00
17/07/2012	Aug 2012	IDEBM2H	77.00
18/07/2012	Aug 2012	IDEBM2H	77.00
19/07/2012	Aug 2012	IDEBM2H	77.00
20/07/2012	Aug 2012	IDEBM2H	77.00
23/07/2012	Aug 2012	IDEBM2H	77.00
24/07/2012	Aug 2012	IDEBM2H	77.00
25/07/2012	Aug 2012	IDEBM2H	77.30
26/07/2012	Aug 2012	IDEBM2H	77.75
27/07/2012	Aug 2012	IDEBM2H	77.75
30/07/2012	Aug 2012	IDEBM2H	77.75
31/07/2012	Aug 2012	IDEBM2H	79.28
02/07/2012	Sep 2012	IDEBM2I	78.75
03/07/2012	Sep 2012	IDEBM2I	78.75
04/07/2012	Sep 2012	IDEBM2I	78.75
05/07/2012	Sep 2012	IDEBM2I	78.75
06/07/2012	Sep 2012	IDEBM2I	78.75
09/07/2012	Sep 2012	IDEBM2I	78.75
10/07/2012	Sep 2012	IDEBM2I	78.75
11/07/2012	Sep 2012	IDEBM2I	78.75
12/07/2012	Sep 2012	IDEBM2I	78.75
13/07/2012	Sep 2012	IDEBM2I	78.75
16/07/2012	Sep 2012	IDEBM2I	78.75
17/07/2012	Sep 2012	IDEBM2I	78.75
18/07/2012	Sep 2012	IDEBM2I	78.75
19/07/2012	Sep 2012	IDEBM2I	78.75
20/07/2012	Sep 2012	IDEBM2I	78.75
23/07/2012	Sep 2012	IDEBM2I	78.75
24/07/2012	Sep 2012	IDEBM2I	78.75
25/07/2012	Sep 2012	IDEBM2I	79.00
26/07/2012	Sep 2012	IDEBM2I	79.00
27/07/2012	Sep 2012	IDEBM2I	79.00
30/07/2012	Sep 2012	IDEBM2I	79.50
31/07/2012	Sep 2012	IDEBM2I	79.50
02/07/2012	Oct 2012	IDEBM2J	76.25
03/07/2012	Oct 2012	IDEBM2J	76.00
04/07/2012	Oct 2012	IDEBM2J	76.00
05/07/2012	Oct 2012	IDEBM2J	76.00
06/07/2012	Oct 2012	IDEBM2J	76.00
09/07/2012	Oct 2012	IDEBM2J	76.25
10/07/2012	Oct 2012	IDEBM2J	76.25
11/07/2012	Oct 2012	IDEBM2J	76.25
12/07/2012	Oct 2012	IDEBM2J	76.25
13/07/2012	Oct 2012	IDEBM2J	76.25
16/07/2012	Oct 2012	IDEBM2J	76.25
17/07/2012	Oct 2012	IDEBM2J	76.25
18/07/2012	Oct 2012	IDEBM2J	76.25
19/07/2012	Oct 2012	IDEBM2J	77.25
20/07/2012	Oct 2012	IDEBM2J	77.25
23/07/2012	Oct 2012	IDEBM2J	77.00
24/07/2012	Oct 2012	IDEBM2J	77.00
25/07/2012	Oct 2012	IDEBM2J	77.25
26/07/2012	Oct 2012	IDEBM2J	77.25
27/07/2012	Oct 2012	IDEBM2J	77.50
30/07/2012	Oct 2012	IDEBM2J	77.50
31/07/2012	Oct 2012	IDEBM2J	77.50

YEARLY FUTURES

DATE	SERIES NAME	SERIES CODE	CLOSING_PRICE
02/07/2012	Y 2013	IDEBY3L	70.75
03/07/2012	Y 2013	IDEBY3L	71.75
04/07/2012	Y 2013	IDEBY3L	71.00
05/07/2012	Y 2013	IDEBY3L	72.38
06/07/2012	Y 2013	IDEBY3L	72.30
09/07/2012	Y 2013	IDEBY3L	72.60
10/07/2012	Y 2013	IDEBY3L	71.88
11/07/2012	Y 2013	IDEBY3L	71.88
12/07/2012	Y 2013	IDEBY3L	72.00
13/07/2012	Y 2013	IDEBY3L	72.00
16/07/2012	Y 2013	IDEBY3L	71.75
17/07/2012	Y 2013	IDEBY3L	72.50
18/07/2012	Y 2013	IDEBY3L	71.93
19/07/2012	Y 2013	IDEBY3L	73.23
20/07/2012	Y 2013	IDEBY3L	73.00
23/07/2012	Y 2013	IDEBY3L	72.00
24/07/2012	Y 2013	IDEBY3L	71.03
25/07/2012	Y 2013	IDEBY3L	71.50
26/07/2012	Y 2013	IDEBY3L	71.63
27/07/2012	Y 2013	IDEBY3L	71.50
30/07/2012	Y 2013	IDEBY3L	72.00
31/07/2012	Y 2013	IDEBY3L	72.00

QUARTERLY FUTURES

DATE	SERIES NAME	SERIES CODE	CLOSING_PRICE
02/07/2012	Q4 2012	IDEBQ24	75.50
03/07/2012	Q4 2012	IDEBQ24	75.58
04/07/2012	Q4 2012	IDEBQ24	76.00
05/07/2012	Q4 2012	IDEBQ24	76.25
06/07/2012	Q4 2012	IDEBQ24	76.50
09/07/2012	Q4 2012	IDEBQ24	76.50
10/07/2012	Q4 2012	IDEBQ24	76.50
11/07/2012	Q4 2012	IDEBQ24	76.50
12/07/2012	Q4 2012	IDEBQ24	76.50
13/07/2012	Q4 2012	IDEBQ24	76.50
16/07/2012	Q4 2012	IDEBQ24	76.50
17/07/2012	Q4 2012	IDEBQ24	76.75
18/07/2012	Q4 2012	IDEBQ24	76.75
19/07/2012	Q4 2012	IDEBQ24	77.00
20/07/2012	Q4 2012	IDEBQ24	77.00
23/07/2012	Q4 2012	IDEBQ24	77.00
24/07/2012	Q4 2012	IDEBQ24	77.00
25/07/2012	Q4 2012	IDEBQ24	77.00
26/07/2012	Q4 2012	IDEBQ24	77.00
27/07/2012	Q4 2012	IDEBQ24	77.93
30/07/2012	Q4 2012	IDEBQ24	77.25
31/07/2012	Q4 2012	IDEBQ24	77.50
02/07/2012	Q1 2013	IDEBQ31	72.78
03/07/2012	Q1 2013	IDEBQ31	74.50
04/07/2012	Q1 2013	IDEBQ31	74.00
05/07/2012	Q1 2013	IDEBQ31	75.75
06/07/2012	Q1 2013	IDEBQ31	74.95
09/07/2012	Q1 2013	IDEBQ31	74.50
10/07/2012	Q1 2013	IDEBQ31	74.50
11/07/2012	Q1 2013	IDEBQ31	75.00
12/07/2012	Q1 2013	IDEBQ31	75.00
13/07/2012	Q1 2013	IDEBQ31	75.25
16/07/2012	Q1 2013	IDEBQ31	74.63
17/07/2012	Q1 2013	IDEBQ31	74.65
18/07/2012	Q1 2013	IDEBQ31	75.25
19/07/2012	Q1 2013	IDEBQ31	75.50
20/07/2012	Q1 2013	IDEBQ31	75.75
23/07/2012	Q1 2013	IDEBQ31	74.50
24/07/2012	Q1 2013	IDEBQ31	73.38
25/07/2012	Q1 2013	IDEBQ31	73.50
26/07/2012	Q1 2013	IDEBQ31	73.50
27/07/2012	Q1 2013	IDEBQ31	74.00
30/07/2012	Q1 2013	IDEBQ31	74.50
31/07/2012	Q1 2013	IDEBQ31	74.50
02/07/2012	Q2 2013	IDEBQ32	66.25
03/07/2012	Q2 2013	IDEBQ32	67.50
04/07/2012	Q2 2013	IDEBQ32	67.25
05/07/2012	Q2 2013	IDEBQ32	68.00
06/07/2012	Q2 2013	IDEBQ32	68.35
09/07/2012	Q2 2013	IDEBQ32	68.00
10/07/2012	Q2 2013	IDEBQ32	67.75
11/07/2012	Q2 2013	IDEBQ32	67.75
12/07/2012	Q2 2013	IDEBQ32	67.50
13/07/2012	Q2 2013	IDEBQ32	67.75
16/07/2012	Q2 2013	IDEBQ32	68.38
17/07/2012	Q2 2013	IDEBQ32	68.25
18/07/2012	Q2 2013	IDEBQ32	68.25
19/07/2012	Q2 2013	IDEBQ32	68.50
20/07/2012	Q2 2013	IDEBQ32	68.75
23/07/2012	Q2 2013	IDEBQ32	68.00
24/07/2012	Q2 2013	IDEBQ32	67.75
25/07/2012	Q2 2013	IDEBQ32	67.50
26/07/2012	Q2 2013	IDEBQ32	67.50
27/07/2012	Q2 2013	IDEBQ32	67.50
30/07/2012	Q2 2013	IDEBQ32	67.75
31/07/2012	Q2 2013	IDEBQ32	67.75
02/07/2012	Q3 2013	IDEBQ33	69.75
03/07/2012	Q3 2013	IDEBQ33	70.25
04/07/2012	Q3 2013	IDEBQ33	70.75
05/07/2012	Q3 2013	IDEBQ33	71.00
06/07/2012	Q3 2013	IDEBQ33	71.00
09/07/2012	Q3 2013	IDEBQ33	71.63
10/07/2012	Q3 2013	IDEBQ33	71.75
11/07/2012	Q3 2013	IDEBQ33	71.75
12/07/2012	Q3 2013	IDEBQ33	71.50
13/07/2012	Q3 2013	IDEBQ33	71.50
16/07/2012	Q3 2013	IDEBQ33	71.50
17/07/2012	Q3 2013	IDEBQ33	72.25
18/07/2012	Q3 2013	IDEBQ33	72.25
19/07/2012	Q3 2013	IDEBQ33	72.75
20/07/2012	Q3 2013	IDEBQ33	72.75
23/07/2012	Q3 2013	IDEBQ33	72.13
24/07/2012	Q3 2013	IDEBQ33	72.00
25/07/2012	Q3 2013	IDEBQ33	71.50
26/07/2012	Q3 2013	IDEBQ33	71.50
27/07/2012	Q3 2013	IDEBQ33	71.50
30/07/2012	Q3 2013	IDEBQ33	72.38
31/07/2012	Q3 2013	IDEBQ33	71.75

Markets Analysis

Piazza Affari, 6 - 20123 Milano

T +39 02 72426.478 | Fax +39 02 8646.4323

e-mail: markets_analysis@borsaitaliana.it

www.borsaitaliana.it



Borsa Italiana
London Stock Exchange Group