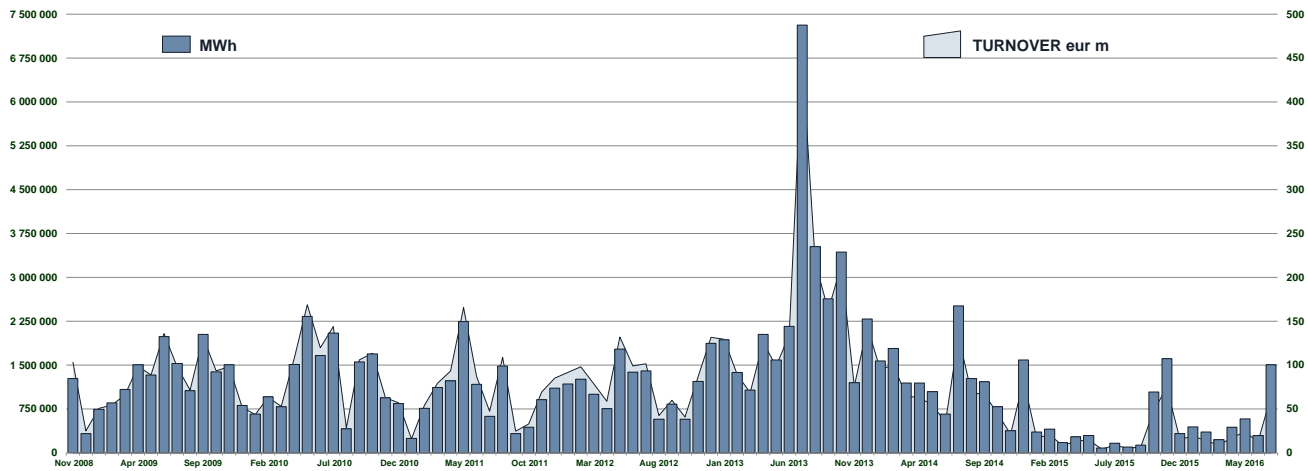




IDEX Statistics

July 2016

IDEX MONTHLY TURNOVER



MONTHLY BASELOAD FUTURES VOLUME

DATE	SERIES NAME	SERIES CODE	MID_PRICE	STANDARD CONTRACTS	TRADES	MWh
01/07/2016	Aug 2016	IDEBM6H	41.10	30	6	22 320
04/07/2016	Aug 2016	IDEBM6H	43.40	15	3	11 160
05/07/2016	Aug 2016	IDEBM6H	43.20	10	2	7 440
08/07/2016	Aug 2016	IDEBM6H	42.95	19	4	14 136
11/07/2016	Aug 2016	IDEBM6H	42.85	15	3	11 160
12/07/2016	Aug 2016	IDEBM6H	42.65	5	1	3 720
13/07/2016	Aug 2016	IDEBM6H	42.80	5	1	3 720
01/07/2016	Sep 2016	IDEBM6I	42.51	17	5	12 240
04/07/2016	Sep 2016	IDEBM6I	44.90	25	3	18 000
20/07/2016	Sep 2016	IDEBM6I	42.50	10	1	7 200
18/07/2016	Oct 2016	IDEBM6J	44.25	10	1	7 450

QUARTERLY BASELOAD FUTURES VOLUME

DATE	SERIES NAME	SERIES CODE	MID_PRICE	STANDARD CONTRACTS	TRADES	MWh
07/07/2016	Q4 2016	IDEBQ64	44.93	10	2	22 090
12/07/2016	Q4 2016	IDEBQ64	44.25	5	1	11 045
13/07/2016	Q4 2016	IDEBQ64	44.60	5	1	11 045
14/07/2016	Q4 2016	IDEBQ64	44.55	1	1	2 209
15/07/2016	Q4 2016	IDEBQ64	44.55	10	2	22 090
08/07/2016	Q1 2017	IDEBQ71	44.20	1	1	2 159
15/07/2016	Q1 2017	IDEBQ71	44.96	20	4	43 180
01/07/2016	Q2 2017	IDEBQ72	37.50	5	1	10 920
08/07/2016	Q2 2017	IDEBQ72	37.75	1	1	2 184
12/07/2016	Q2 2017	IDEBQ72	38.00	5	1	10 920
14/07/2016	Q2 2017	IDEBQ72	38.10	10	2	21 840
15/07/2016	Q2 2017	IDEBQ72	38.20	5	1	10 920
04/07/2016	Q3 2017	IDEBQ73	44.75	45	9	99 360
08/07/2016	Q3 2017	IDEBQ73	44.00	1	1	2 208
11/07/2016	Q3 2017	IDEBQ73	44.10	40	8	88 320
15/07/2016	Q3 2017	IDEBQ73	44.30	5	1	11 040
18/07/2016	Q3 2017	IDEBQ73	45.00	5	1	11 040

YEARLY BASELOAD FUTURES VOLUME

DATE	SERIES NAME	SERIES CODE	MID_PRICE	STANDARD CONTRACTS	TRADES	MWh
01/07/2016	Y 2017	IDEBY7L	42.08	2	2	17 520
06/07/2016	Y 2017	IDEBY7L	42.50	10	2	87 600
08/07/2016	Y 2017	IDEBY7L	42.41	9	9	78 840
11/07/2016	Y 2017	IDEBY7L	42.19	6	6	52 560
12/07/2016	Y 2017	IDEBY7L	42.50	2	1	17 520
13/07/2016	Y 2017	IDEBY7L	42.50	9	8	78 840
14/07/2016	Y 2017	IDEBY7L	42.50	1	1	8 760
15/07/2016	Y 2017	IDEBY7L	42.52	7	3	61 320
18/07/2016	Y 2017	IDEBY7L	43.10	2	2	17 520
19/07/2016	Y 2017	IDEBY7L	42.85	2	2	17 520
21/07/2016	Y 2017	IDEBY7L	43.09	17	7	148 920
25/07/2016	Y 2017	IDEBY7L	42.79	20	8	175 200
27/07/2016	Y 2017	IDEBY7L	42.50	11	3	96 360
28/07/2016	Y 2017	IDEBY7L	42.45	1	1	8 760
29/07/2016	Y 2017	IDEBY7L	41.98	15	3	131 400

PEAKLOAD FUTURES VOLUME

DATE	SERIES NAME	SERIES CODE	MID_PRICE	STANDARD CONTRACTS	TRADES	MWh
18/07/2016	Aug 2016	IDEPM6H	44.00	10	1	2 760
18/07/2016	Q1 2017	IDEPQ71	54.25	5	1	3 900

## MONTHLY BASELOAD FUTURES

DATE	SERIES NAME	SERIES CODE	CLOSING_PRICE
01/07/2016	Aug 2016	IDEBM6H	40.75
04/07/2016	Aug 2016	IDEBM6H	42.75
05/07/2016	Aug 2016	IDEBM6H	42.88
06/07/2016	Aug 2016	IDEBM6H	42.50
07/07/2016	Aug 2016	IDEBM6H	43.50
08/07/2016	Aug 2016	IDEBM6H	42.75
11/07/2016	Aug 2016	IDEBM6H	42.48
12/07/2016	Aug 2016	IDEBM6H	42.75
13/07/2016	Aug 2016	IDEBM6H	42.25
14/07/2016	Aug 2016	IDEBM6H	42.75
15/07/2016	Aug 2016	IDEBM6H	42.75
18/07/2016	Aug 2016	IDEBM6H	43.25
19/07/2016	Aug 2016	IDEBM6H	42.75
20/07/2016	Aug 2016	IDEBM6H	42.75
21/07/2016	Aug 2016	IDEBM6H	42.35
22/07/2016	Aug 2016	IDEBM6H	41.75
25/07/2016	Aug 2016	IDEBM6H	41.50
26/07/2016	Aug 2016	IDEBM6H	41.00
27/07/2016	Aug 2016	IDEBM6H	40.63
28/07/2016	Aug 2016	IDEBM6H	40.25
29/07/2016	Aug 2016	IDEBM6H	39.75
01/07/2016	Sep 2016	IDEBM6I	42.83
04/07/2016	Sep 2016	IDEBM6I	44.50
05/07/2016	Sep 2016	IDEBM6I	44.30
06/07/2016	Sep 2016	IDEBM6I	43.00
07/07/2016	Sep 2016	IDEBM6I	44.00
08/07/2016	Sep 2016	IDEBM6I	43.50
11/07/2016	Sep 2016	IDEBM6I	43.28
12/07/2016	Sep 2016	IDEBM6I	43.13
13/07/2016	Sep 2016	IDEBM6I	43.25
14/07/2016	Sep 2016	IDEBM6I	43.50
15/07/2016	Sep 2016	IDEBM6I	43.50
18/07/2016	Sep 2016	IDEBM6I	43.50
19/07/2016	Sep 2016	IDEBM6I	43.50
20/07/2016	Sep 2016	IDEBM6I	42.50
21/07/2016	Sep 2016	IDEBM6I	42.75
22/07/2016	Sep 2016	IDEBM6I	42.50
25/07/2016	Sep 2016	IDEBM6I	42.50
26/07/2016	Sep 2016	IDEBM6I	42.13
27/07/2016	Sep 2016	IDEBM6I	41.75
28/07/2016	Sep 2016	IDEBM6I	41.25
29/07/2016	Sep 2016	IDEBM6I	40.50
01/07/2016	Oct 2016	IDEBM6J	43.50
04/07/2016	Oct 2016	IDEBM6J	44.50
05/07/2016	Oct 2016	IDEBM6J	44.50
06/07/2016	Oct 2016	IDEBM6J	43.75
07/07/2016	Oct 2016	IDEBM6J	44.00
08/07/2016	Oct 2016	IDEBM6J	43.50
11/07/2016	Oct 2016	IDEBM6J	43.63
12/07/2016	Oct 2016	IDEBM6J	43.75
13/07/2016	Oct 2016	IDEBM6J	43.75
14/07/2016	Oct 2016	IDEBM6J	43.50
15/07/2016	Oct 2016	IDEBM6J	43.25
18/07/2016	Oct 2016	IDEBM6J	44.25
19/07/2016	Oct 2016	IDEBM6J	44.25
20/07/2016	Oct 2016	IDEBM6J	43.75
21/07/2016	Oct 2016	IDEBM6J	43.50
22/07/2016	Oct 2016	IDEBM6J	43.50
25/07/2016	Oct 2016	IDEBM6J	43.50
26/07/2016	Oct 2016	IDEBM6J	43.38
27/07/2016	Oct 2016	IDEBM6J	43.13
28/07/2016	Oct 2016	IDEBM6J	43.00
29/07/2016	Oct 2016	IDEBM6J	42.00

## YEARLY BASELOAD FUTURES

DATE	SERIES NAME	SERIES CODE	CLOSING_PRICE
01/07/2016	Y 2017	IDEBY7L	42.68
04/07/2016	Y 2017	IDEBY7L	43.25
05/07/2016	Y 2017	IDEBY7L	42.43
06/07/2016	Y 2017	IDEBY7L	42.50
07/07/2016	Y 2017	IDEBY7L	42.83
08/07/2016	Y 2017	IDEBY7L	42.40
11/07/2016	Y 2017	IDEBY7L	42.40
12/07/2016	Y 2017	IDEBY7L	42.50
13/07/2016	Y 2017	IDEBY7L	42.50
14/07/2016	Y 2017	IDEBY7L	42.40
15/07/2016	Y 2017	IDEBY7L	43.25
18/07/2016	Y 2017	IDEBY7L	43.30
19/07/2016	Y 2017	IDEBY7L	43.00
20/07/2016	Y 2017	IDEBY7L	43.00
21/07/2016	Y 2017	IDEBY7L	43.50
22/07/2016	Y 2017	IDEBY7L	42.75
25/07/2016	Y 2017	IDEBY7L	42.45
26/07/2016	Y 2017	IDEBY7L	42.63
27/07/2016	Y 2017	IDEBY7L	42.50
28/07/2016	Y 2017	IDEBY7L	42.08
29/07/2016	Y 2017	IDEBY7L	41.98
01/07/2016	Y 2018	IDEBY8L	41.00
04/07/2016	Y 2018	IDEBY8L	42.00
05/07/2016	Y 2018	IDEBY8L	42.00
06/07/2016	Y 2018	IDEBY8L	41.50
07/07/2016	Y 2018	IDEBY8L	41.75
08/07/2016	Y 2018	IDEBY8L	41.50
11/07/2016	Y 2018	IDEBY8L	41.50
12/07/2016	Y 2018	IDEBY8L	41.50
13/07/2016	Y 2018	IDEBY8L	41.50
14/07/2016	Y 2018	IDEBY8L	41.50
15/07/2016	Y 2018	IDEBY8L	42.00
18/07/2016	Y 2018	IDEBY8L	42.00
19/07/2016	Y 2018	IDEBY8L	42.00
20/07/2016	Y 2018	IDEBY8L	41.75
21/07/2016	Y 2018	IDEBY8L	41.75
22/07/2016	Y 2018	IDEBY8L	41.75
25/07/2016	Y 2018	IDEBY8L	41.75
26/07/2016	Y 2018	IDEBY8L	41.50
27/07/2016	Y 2018	IDEBY8L	41.38
28/07/2016	Y 2018	IDEBY8L	41.38
29/07/2016	Y 2018	IDEBY8L	41.00

## QUARTERLY BASELOAD FUTURES

DATE	SERIES NAME	SERIES CODE	CLOSING_PRICE
01/07/2016	Q4 2016	IDEBQ64	44.25
04/07/2016	Q4 2016	IDEBQ64	45.00
05/07/2016	Q4 2016	IDEBQ64	44.15
06/07/2016	Q4 2016	IDEBQ64	43.85
07/07/2016	Q4 2016	IDEBQ64	44.45
08/07/2016	Q4 2016	IDEBQ64	44.50
11/07/2016	Q4 2016	IDEBQ64	44.03
12/07/2016	Q4 2016	IDEBQ64	44.38
13/07/2016	Q4 2016	IDEBQ64	44.25
14/07/2016	Q4 2016	IDEBQ64	44.50
15/07/2016	Q4 2016	IDEBQ64	45.00
18/07/2016	Q4 2016	IDEBQ64	45.50
19/07/2016	Q4 2016	IDEBQ64	45.70
20/07/2016	Q4 2016	IDEBQ64	45.00
21/07/2016	Q4 2016	IDEBQ64	45.00
22/07/2016	Q4 2016	IDEBQ64	45.00
25/07/2016	Q4 2016	IDEBQ64	44.43
26/07/2016	Q4 2016	IDEBQ64	44.88
27/07/2016	Q4 2016	IDEBQ64	44.63
28/07/2016	Q4 2016	IDEBQ64	44.63
29/07/2016	Q4 2016	IDEBQ64	44.00
01/07/2016	Q1 2017	IDEBQ71	44.55
04/07/2016	Q1 2017	IDEBQ71	45.00
05/07/2016	Q1 2017	IDEBQ71	44.75
06/07/2016	Q1 2017	IDEBQ71	44.83
07/07/2016	Q1 2017	IDEBQ71	45.00
08/07/2016	Q1 2017	IDEBQ71	44.50
11/07/2016	Q1 2017	IDEBQ71	44.25
12/07/2016	Q1 2017	IDEBQ71	44.05
13/07/2016	Q1 2017	IDEBQ71	44.25
14/07/2016	Q1 2017	IDEBQ71	44.50
15/07/2016	Q1 2017	IDEBQ71	45.63
18/07/2016	Q1 2017	IDEBQ71	45.00
19/07/2016	Q1 2017	IDEBQ71	45.25
20/07/2016	Q1 2017	IDEBQ71	45.25
21/07/2016	Q1 2017	IDEBQ71	45.25
22/07/2016	Q1 2017	IDEBQ71	45.25
25/07/2016	Q1 2017	IDEBQ71	45.50
26/07/2016	Q1 2017	IDEBQ71	45.13
27/07/2016	Q1 2017	IDEBQ71	45.00
28/07/2016	Q1 2017	IDEBQ71	45.00
29/07/2016	Q1 2017	IDEBQ71	44.25
01/07/2016	Q2 2017	IDEBQ72	38.03
04/07/2016	Q2 2017	IDEBQ72	38.50
05/07/2016	Q2 2017	IDEBQ72	37.90
06/07/2016	Q2 2017	IDEBQ72	37.93
07/07/2016	Q2 2017	IDEBQ72	38.50
08/07/2016	Q2 2017	IDEBQ72	38.25
11/07/2016	Q2 2017	IDEBQ72	38.13
12/07/2016	Q2 2017	IDEBQ72	37.93
13/07/2016	Q2 2017	IDEBQ72	37.50
14/07/2016	Q2 2017	IDEBQ72	38.25
15/07/2016	Q2 2017	IDEBQ72	38.70
18/07/2016	Q2 2017	IDEBQ72	38.30
19/07/2016	Q2 2017	IDEBQ72	38.50
20/07/2016	Q2 2017	IDEBQ72	38.50
21/07/2016	Q2 2017	IDEBQ72	38.25
22/07/2016	Q2 2017	IDEBQ72	38.00
25/07/2016	Q2 2017	IDEBQ72	38.00
26/07/2016	Q2 2017	IDEBQ72	38.00
27/07/2016	Q2 2017	IDEBQ72	38.00
28/07/2016	Q2 2017	IDEBQ72	38.00
29/07/2016	Q2 2017	IDEBQ72	37.50
01/07/2016	Q3 2017	IDEBQ73	43.75
04/07/2016	Q3 2017	IDEBQ73	44.50
05/07/2016	Q3 2017	IDEBQ73	44.00
06/07/2016	Q3 2017	IDEBQ73	44.15
07/07/2016	Q3 2017	IDEBQ73	44.00
08/07/2016	Q3 2017	IDEBQ73	43.75
11/07/2016	Q3 2017	IDEBQ73	43.88
12/07/2016	Q3 2017	IDEBQ73	43.88
13/07/2016	Q3 2017	IDEBQ73	44.50
14/07/2016	Q3 2017	IDEBQ73	43.75
15/07/2016	Q3 2017	IDEBQ73	45.03
18/07/2016	Q3 2017	IDEBQ73	44.48
19/07/2016	Q3 2017	IDEBQ73	44.75
20/07/2016	Q3 2017	IDEBQ73	44.75
21/07/2016	Q3 2017	IDEBQ73	44.50
22/07/2016	Q3 2017	IDEBQ73	44.00
25/07/2016	Q3 2017	IDEBQ73	44.00
26/07/2016	Q3 2017	IDEBQ73	43.38
27/07/2016	Q3 2017	IDEBQ73	43.75
28/07/2016	Q3 2017	IDEBQ73	43.75
29/07/2016	Q3 2017	IDEBQ73	43.25

## MONTHLY PEAKLOAD FUTURES

DATE	SERIES NAME	SERIES CODE	CLOSING_PRICE
01/07/2016	Aug 2016	IDEPM6H	41.50
04/07/2016	Aug 2016	IDEPM6H	43.00
05/07/2016	Aug 2016	IDEPM6H	42.75
06/07/2016	Aug 2016	IDEPM6H	42.50
07/07/2016	Aug 2016	IDEPM6H	43.50
08/07/2016	Aug 2016	IDEPM6H	43.25
11/07/2016	Aug 2016	IDEPM6H	43.25
12/07/2016	Aug 2016	IDEPM6H	43.13
13/07/2016	Aug 2016	IDEPM6H	42.78
14/07/2016	Aug 2016	IDEPM6H	43.25
15/07/2016	Aug 2016	IDEPM6H	43.00
18/07/2016	Aug 2016	IDEPM6H	44.00
19/07/2016	Aug 2016	IDEPM6H	43.50
20/07/2016	Aug 2016	IDEPM6H	43.50
21/07/2016	Aug 2016	IDEPM6H	43.75
22/07/2016	Aug 2016	IDEPM6H	43.50
25/07/2016	Aug 2016	IDEPM6H	42.50
26/07/2016	Aug 2016	IDEPM6H	42.25
27/07/2016	Aug 2016	IDEPM6H	41.88
28/07/2016	Aug 2016	IDEPM6H	41.75
29/07/2016	Aug 2016	IDEPM6H	40.50
01/07/2016	Sep 2016	IDEPM6I	47.25
04/07/2016	Sep 2016	IDEPM6I	48.00
05/07/2016	Sep 2016	IDEPM6I	47.63
06/07/2016	Sep 2016	IDEPM6I	48.00
07/07/2016	Sep 2016	IDEPM6I	48.25
08/07/2016	Sep 2016	IDEPM6I	48.00
11/07/2016	Sep 2016	IDEPM6I	48.00
12/07/2016	Sep 2016	IDEPM6I	47.50
13/07/2016	Sep 2016	IDEPM6I	47.50
14/07/2016	Sep 2016	IDEPM6I	48.00
15/07/2016	Sep 2016	IDEPM6I	47.75
18/07/2016	Sep 2016	IDEPM6I	47.75
19/07/2016	Sep 2016	IDEPM6I	47.75
20/07/2016	Sep 2016	IDEPM6I	47.75
21/07/2016	Sep 2016	IDEPM6I	47.50
22/07/2016	Sep 2016	IDEPM6I	47.25
25/07/2016	Sep 2016	IDEPM6I	47.25
26/07/2016	Sep 2016	IDEPM6I	47.25
27/07/2016	Sep 2016	IDEPM6I	46.50
28/07/2016	Sep 2016	IDEPM6I	46.50
29/07/2016	Sep 2016	IDEPM6I	45.50
01/07/2016	Oct 2016	IDEPM6J	52.00
04/07/2016	Oct 2016	IDEPM6J	52.50
05/07/2016	Oct 2016	IDEPM6J	51.00
06/07/2016	Oct 2016	IDEPM6J	51.00
07/07/2016	Oct 2016	IDEPM6J	50.75
08/07/2016	Oct 2016	IDEPM6J	50.00
11/07/2016	Oct 2016	IDEPM6J	50.00
12/07/2016	Oct 2016	IDEPM6J	50.00
13/07/2016	Oct 2016	IDEPM6J	50.00
14/07/2016	Oct 2016	IDEPM6J	50.00
15/07/2016	Oct 2016	IDEPM6J	49.75
18/07/2016	Oct 2016	IDEPM6J	50.25
19/07/2016	Oct 2016	IDEPM6J	50.25
20/07/2016	Oct 2016	IDEPM6J	50.00
21/07/2016	Oct 2016	IDEPM6J	50.00
22/07/2016	Oct 2016	IDEPM6J	50.00
25/07/2016	Oct 2016	IDEPM6J	50.00
26/07/2016	Oct 2016	IDEPM6J	50.00
27/07/2016	Oct 2016	IDEPM6J	50.00
28/07/2016	Oct 2016	IDEPM6J	50.00
29/07/2016	Oct 2016	IDEPM6J	48.50

## YEARLY PEAKLOAD FUTURES

DATE	SERIES NAME	SERIES CODE	CLOSING_PRICE
01/07/2016	Y 2017	IDEPY7L	47.75
04/07/2016	Y 2017	IDEPY7L	48.25
05/07/2016	Y 2017	IDEPY7L	48.00
06/07/2016	Y 2017	IDEPY7L	48.50
07/07/2016	Y 2017	IDEPY7L	48.75
08/07/2016	Y 2017	IDEPY7L	48.75
11/07/2016	Y 2017	IDEPY7L	48.75
12/07/2016	Y 2017	IDEPY7L	48.50
13/07/2016	Y 2017	IDEPY7L	48.50
14/07/2016	Y 2017	IDEPY7L	48.75
15/07/2016	Y 2017	IDEPY7L	48.50
18/07/2016	Y 2017	IDEPY7L	49.25
19/07/2016	Y 2017	IDEPY7L	48.75
20/07/2016	Y 2017	IDEPY7L	48.75
21/07/2016	Y 2017	IDEPY7L	48.75
22/07/2016	Y 2017	IDEPY7L	48.00
25/07/2016	Y 2017	IDEPY7L	48.00
26/07/2016	Y 2017	IDEPY7L	47.98
27/07/2016	Y 2017	IDEPY7L	47.98
28/07/2016	Y 2017	IDEPY7L	47.98
29/07/2016	Y 2017	IDEPY7L	47.50

Markets Analysis  
Piazza degli Affari, 6 - 20123 Milano  
T +39 02 724261 | Fax +39 02 8646.4323  
e-mail: markets\_analysis@borsaitaliana.it  
www.borsaitaliana.it

## QUARTERLY PEAKLOAD FUTURES

DATE	SERIES NAME	SERIES CODE	CLOSING_PRICE
01/07/2016	Q4 2016	IDEPQ64	52.43
04/07/2016	Q4 2016	IDEPQ64	52.75
05/07/2016	Q4 2016	IDEPQ64	52.50
06/07/2016	Q4 2016	IDEPQ64	51.00
07/07/2016	Q4 2016	IDEPQ64	52.00
08/07/2016	Q4 2016	IDEPQ64	52.00
11/07/2016	Q4 2016	IDEPQ64	52.00
12/07/2016	Q4 2016	IDEPQ64	51.50
13/07/2016	Q4 2016	IDEPQ64	51.50
14/07/2016	Q4 2016	IDEPQ64	52.00
15/07/2016	Q4 2016	IDEPQ64	52.50
18/07/2016	Q4 2016	IDEPQ64	53.00
19/07/2016	Q4 2016	IDEPQ64	53.00
20/07/2016	Q4 2016	IDEPQ64	52.50
21/07/2016	Q4 2016	IDEPQ64	52.50
22/07/2016	Q4 2016	IDEPQ64	52.50
25/07/2016	Q4 2016	IDEPQ64	52.25
26/07/2016	Q4 2016	IDEPQ64	52.00
27/07/2016	Q4 2016	IDEPQ64	52.00
28/07/2016	Q4 2016	IDEPQ64	52.00
29/07/2016	Q4 2016	IDEPQ64	51.00
01/07/2016	Q1 2017	IDEPQ71	51.75
04/07/2016	Q1 2017	IDEPQ71	52.00
05/07/2016	Q1 2017	IDEPQ71	52.00
06/07/2016	Q1 2017	IDEPQ71	51.75
07/07/2016	Q1 2017	IDEPQ71	51.75
08/07/2016	Q1 2017	IDEPQ71	52.25
11/07/2016	Q1 2017	IDEPQ71	52.25
12/07/2016	Q1 2017	IDEPQ71	51.75
13/07/2016	Q1 2017	IDEPQ71	51.75
14/07/2016	Q1 2017	IDEPQ71	52.25
15/07/2016	Q1 2017	IDEPQ71	52.50
18/07/2016	Q1 2017	IDEPQ71	54.00
19/07/2016	Q1 2017	IDEPQ71	54.00
20/07/2016	Q1 2017	IDEPQ71	54.00
21/07/2016	Q1 2017	IDEPQ71	54.00
22/07/2016	Q1 2017	IDEPQ71	53.00
25/07/2016	Q1 2017	IDEPQ71	53.00
26/07/2016	Q1 2017	IDEPQ71	52.75
27/07/2016	Q1 2017	IDEPQ71	52.50
28/07/2016	Q1 2017	IDEPQ71	52.50
29/07/2016	Q1 2017	IDEPQ71	51.25
01/07/2016	Q2 2017	IDEPQ72	39.75
04/07/2016	Q2 2017	IDEPQ72	40.50
05/07/2016	Q2 2017	IDEPQ72	40.00
06/07/2016	Q2 2017	IDEPQ72	40.00
07/07/2016	Q2 2017	IDEPQ72	40.00
08/07/2016	Q2 2017	IDEPQ72	40.50
11/07/2016	Q2 2017	IDEPQ72	40.50
12/07/2016	Q2 2017	IDEPQ72	40.00
13/07/2016	Q2 2017	IDEPQ72	40.00
14/07/2016	Q2 2017	IDEPQ72	40.50
15/07/2016	Q2 2017	IDEPQ72	40.00
18/07/2016	Q2 2017	IDEPQ72	40.50
19/07/2016	Q2 2017	IDEPQ72	40.50
20/07/2016	Q2 2017	IDEPQ72	40.50
21/07/2016	Q2 2017	IDEPQ72	40.50
22/07/2016	Q2 2017	IDEPQ72	40.50
25/07/2016	Q2 2017	IDEPQ72	40.50
26/07/2016	Q2 2017	IDEPQ72	40.25
27/07/2016	Q2 2017	IDEPQ72	40.00
28/07/2016	Q2 2017	IDEPQ72	40.00
29/07/2016	Q2 2017	IDEPQ72	39.00
01/07/2016	Q3 2017	IDEPQ73	48.00
04/07/2016	Q3 2017	IDEPQ73	48.00
05/07/2016	Q3 2017	IDEPQ73	47.50
06/07/2016	Q3 2017	IDEPQ73	47.50
07/07/2016	Q3 2017	IDEPQ73	47.50
08/07/2016	Q3 2017	IDEPQ73	47.50
11/07/2016	Q3 2017	IDEPQ73	47.50
12/07/2016	Q3 2017	IDEPQ73	47.13
13/07/2016	Q3 2017	IDEPQ73	47.50
14/07/2016	Q3 2017	IDEPQ73	47.50
15/07/2016	Q3 2017	IDEPQ73	47.50
18/07/2016	Q3 2017	IDEPQ73	48.00
19/07/2016	Q3 2017	IDEPQ73	48.00
20/07/2016	Q3 2017	IDEPQ73	48.00
21/07/2016	Q3 2017	IDEPQ73	48.00
22/07/2016	Q3 2017	IDEPQ73	47.50
25/07/2016	Q3 2017	IDEPQ73	47.50
26/07/2016	Q3 2017	IDEPQ73	47.50
27/07/2016	Q3 2017	IDEPQ73	47.50
28/07/2016	Q3 2017	IDEPQ73	47.50
29/07/2016	Q3 2017	IDEPQ73	47.50

This document contains text, data, graphics, photographs, illustrations, artwork, names, logos, trade marks, service marks and information ("Information") connected with Borsa Italiana S.p.A. ("Borsa Italiana").

All reasonable efforts have been made to ensure that the Information in this document was correct at the time of publication. However, Borsa Italiana Spa accepts no liability for decisions taken, or systems-related or other work carried out by any party based on this document. The publication of this document does not represent solicitation, by Borsa Italiana, of public saving and is not to be considered as a recommendation by Borsa Italiana as to the suitability of the investment, if any, herein described.

© July 2016 Borsa Italiana S.p.A.. All rights reserved.