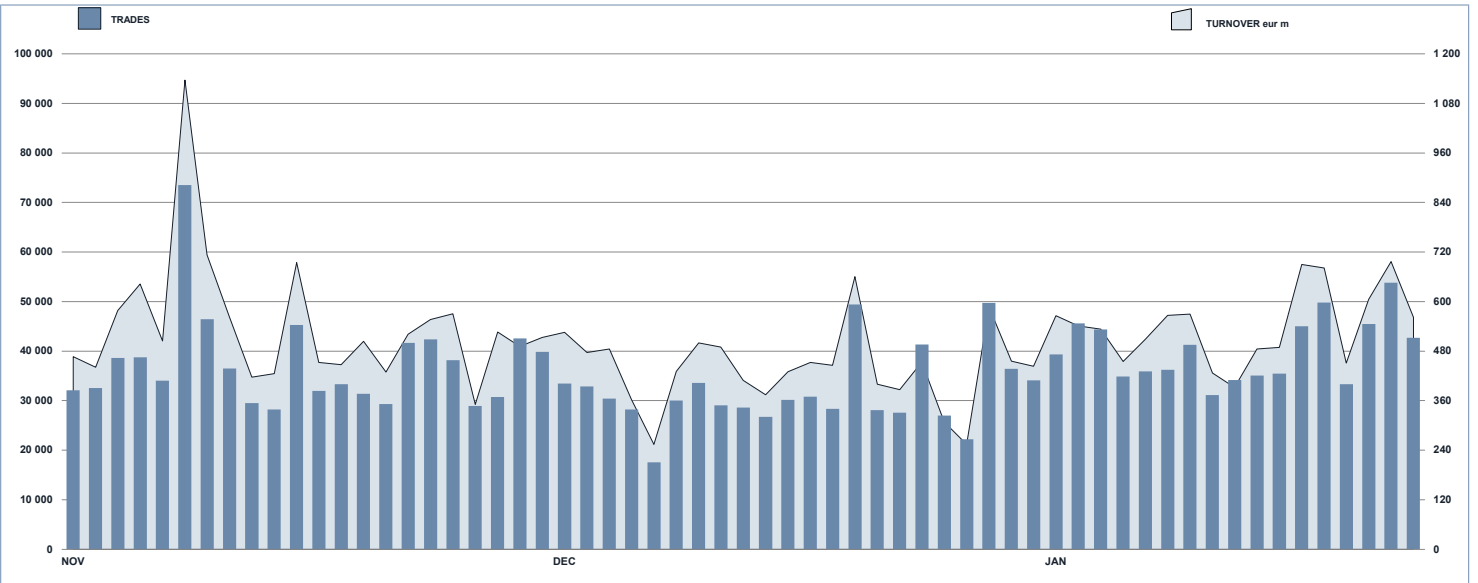




ETFplus Statistics

January 2021

ETFPLUS DAILY TURNOVER



MAIN INDICATORS

	LISTED INSTRUMENT				TRADING					
	LISTED END OF MONTH	MONTH NEW LISTED	AUM in MT		NOVEMBER 2020		DECEMBER 2020		JANUARY 2021	
			eur m 30/12/2020	eur m 29/01/2021	Trades	Turnover eur m	Trades	Turnover eur m	Trades	Turnover eur m
ETF - DEVELOPED MARKET	352	1	30 728.33	34 962.26	183 035	3 442.03	111 741	2 097.09	148 104	2 875.27
ETF - CORPORATE AND GOV BOND	349	3	41 994.95	42 160.83	120 974	2 409.17	110 313	2 310.37	119 817	2 237.28
ETF - EMERGING MARKETS	109	1	5 595.45	6 037.26	47 808	739.99	39 097	501.02	63 444	900.86
ETF - STYLE	105	0	3 101.86	3 236.07	24 908	385.16	19 335	236.89	23 493	297.99
OTHERS	203	3	12 546.63	8 575.01	169 616	1 954.51	156 392	1 550.57	253 210	2 348.47
ETC/ETN	218	0	7 626.37	7 899.42	239 550	2 500.65	178 374	1 917.66	195 861	2 045.47
TOTAL	1 336	8	101 593.58	102 870.85	785 891	11 431.52	615 252	8 613.61	803 929	10 705.34
<i>of which RFO</i>						<i>445.47</i>		<i>172.36</i>		<i>324.85</i>

MOST TRADED IN THE MONTH BY TRADES AND RELATIVE SPREAD

Name	Trading Code	ISIN	TRADES		SPREAD	
			number	% TOT	BBO	25 000 €
1 ISHARES GLOBAL CLEAN ENERGY UCITS ETF	INRG	IE00B1XNHC34	51 661	6.4%	0.08%	0.10%
2 WISDOMTREE WTI CRUDE OIL 2X DAILY LEV	LOIL	JE00BDD9Q840	11 917	1.5%	0.21%	0.22%
3 WISDOMTREE NATURAL GAS 3X DAILY SHORT	3NGS	IE00B76BRD76	10 703	1.3%	0.45%	0.50%
4 WISDOMTREE CLOUD COMPUT UCITS ETF USD A	WCLED	IE00BJGWQNT2	9 454	1.2%	0.16%	0.19%
5 WISDOMTREE FTSE MIB 3X DAILY SHORT	3ITS	IE00B873CW36	8 961	1.1%	0.12%	0.14%
6 LG&B BATTERY VALUE-CHAIN UCITS ETF	BATT	IE00BFQM2Z96	8 901	1.1%	0.23%	0.32%
7 VANECK VIDEO GAMING ESPORTS UCITS ETF	ESPO	IE00BYWQWR46	8 256	1.0%	0.15%	0.18%
8 INVECO GLOBAL BLOCKCHAIN UCITS ETF A	BCHN	IE00BGBN6P87	8 248	1.0%	0.30%	0.43%
9 WISDOMTREE BATTERY SOLUTIONS UCITS ETF	VOLT	IE00BKLF1R75	8 203	1.0%	0.23%	0.35%
10 WISDOMTREE WTI CRUDE OIL	CRUD	GB00B15KVX33	8 102	1.0%	0.07%	0.08%

MOST TRADED IN THE MONTH BY TURNOVER AND RELATIVE SPREAD

Name	Trading Code	ISIN	TURNOVER		SPREAD	
			eur m	% TOT	BBO	25 000 €
1 ISHARES GLOBAL CLEAN ENERGY UCITS ETF	INRG	IE00B1XNHC34	588	5.5%	0.08%	0.10%
2 WISDOMTREE WTI CRUDE OIL 2X DAILY LEV	LOIL	JE00BDD9Q840	191	1.8%	0.21%	0.22%
3 WISDOMTREE WTI CRUDE OIL	CRUD	GB00B15KVX33	181	1.7%	0.07%	0.08%
4 ISHARES CORE MSCI WORLD UCITS ETF ACC	SWDA	IE00B4LSY983	116	1.1%	0.05%	0.05%
5 WISDOMTREE FTSE MIB 3X DAILY LEVERAGED	3ITL	IE00B8N83063	108	1.0%	0.13%	0.13%
6 ISHARES HIGH YLD CORP UCITS ETF DIST	IHYG	IE00B66F4759	105	1.0%	0.06%	0.06%
7 LYXOR FTSE MIB DAI 2X LEV UCITS ETF DIST	LEVMI	FR0010446658	105	1.0%	0.09%	0.10%
8 ISHARES CORE MSCI EM IMI UCITS ETF ACC	EIMI	IE00BKMG2686	104	1.0%	0.06%	0.06%
9 WISDOMTREE CLOUD COMPUT UCITS ETF USD A	WCLED	IE00BJGWQNT2	96	0.9%	0.16%	0.19%
10 ISHARES EURO STOXX 50 (DIST) UCITS ETF	EUE	IE0008471009	90	0.8%	0.05%	0.05%

MOST TRADED IN THE YEAR BY TRADES AND RELATIVE SPREAD

Name	Trading Code	ISIN	TRADES		SPREAD	
			number	% TOT	BBO	25 000 €
1 ISHARES GLOBAL CLEAN ENERGY UCITS ETF	INRG	IE00B1XNHC34	51 661	6.4%	0.08%	0.10%
2 WISDOMTREE WTI CRUDE OIL 2X DAILY LEV	LOIL	JE00BDD9Q840	11 917	1.5%	0.21%	0.22%
3 WISDOMTREE NATURAL GAS 3X DAILY SHORT	3NGS	IE00B76BRD76	10 703	1.3%	0.45%	0.50%
4 WISDOMTREE CLOUD COMPUT UCITS ETF USD A	WCLED	IE00BJGWQNT2	9 454	1.2%	0.16%	0.19%
5 WISDOMTREE FTSE MIB 3X DAILY SHORT	3ITS	IE00B873CW36	8 961	1.1%	0.12%	0.14%
6 LG&B BATTERY VALUE-CHAIN UCITS ETF	BATT	IE00BFQM2Z96	8 901	1.1%	0.23%	0.32%
7 VANECK VIDEO GAMING ESPORTS UCITS ETF	ESPO	IE00BYWQWR46	8 256	1.0%	0.15%	0.18%
8 INVECO GLOBAL BLOCKCHAIN UCITS ETF A	BCHN	IE00BGBN6P87	8 248	1.0%	0.30%	0.43%
9 WISDOMTREE BATTERY SOLUTIONS UCITS ETF	VOLT	IE00BKLF1R75	8 203	1.0%	0.23%	0.35%
10 WISDOMTREE WTI CRUDE OIL	CRUD	GB00B15KVX33	8 102	1.0%	0.07%	0.08%

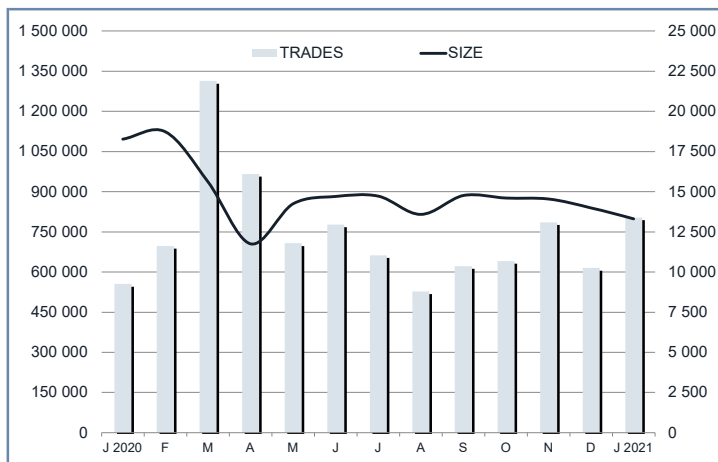
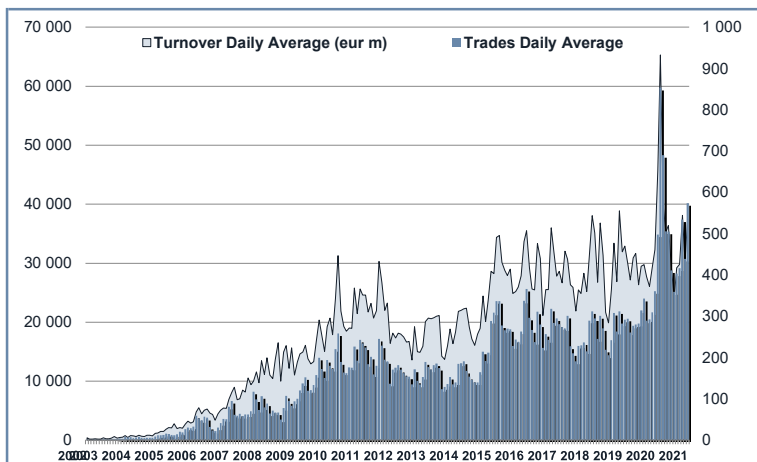
MOST TRADED IN THE YEAR BY TURNOVER AND RELATIVE SPREAD

Name	Trading Code	ISIN	TURNOVER		SPREAD	
			eur m	% TOT	BBO	25 000 €
1 ISHARES GLOBAL CLEAN ENERGY UCITS ETF	INRG	IE00B1XNHC34	588	5.5%	0.08%	0.10%
2 WISDOMTREE WTI CRUDE OIL 2X DAILY LEV	LOIL	JE00BDD9Q840	191	1.8%	0.21%	0.22%
3 WISDOMTREE WTI CRUDE OIL	CRUD	GB00B15KVX33	181	1.7%	0.07%	0.08%
4 ISHARES CORE MSCI WORLD UCITS ETF ACC	SWDA	IE00B4LSY983	116	1.1%	0.05%	0.05%
5 WISDOMTREE FTSE MIB 3X DAILY LEVERAGED	3ITL	IE00B8N83063	108	1.0%	0.13%	0.13%
6 ISHARES HIGH YLD CORP UCITS ETF DIST	IHYG	IE00B66F4759	105	1.0%	0.06%	0.06%
7 LYXOR FTSE MIB DAI 2X LEV UCITS ETF DIST	LEVMI	FR0010446658	105	1.0%	0.09%	0.10%
8 ISHARES CORE MSCI EM IMI UCITS ETF ACC	EIMI	IE00BKMG2686	104	1.0%	0.06%	0.06%
9 WISDOMTREE CLOUD COMPUT UCITS ETF USD A	WCLED	IE00BJGWQNT2	96	0.9%	0.16%	0.19%
10 ISHARES EURO STOXX 50 (DIST) UCITS ETF	EUE	IE0008471009	90	0.8%	0.05%	0.05%

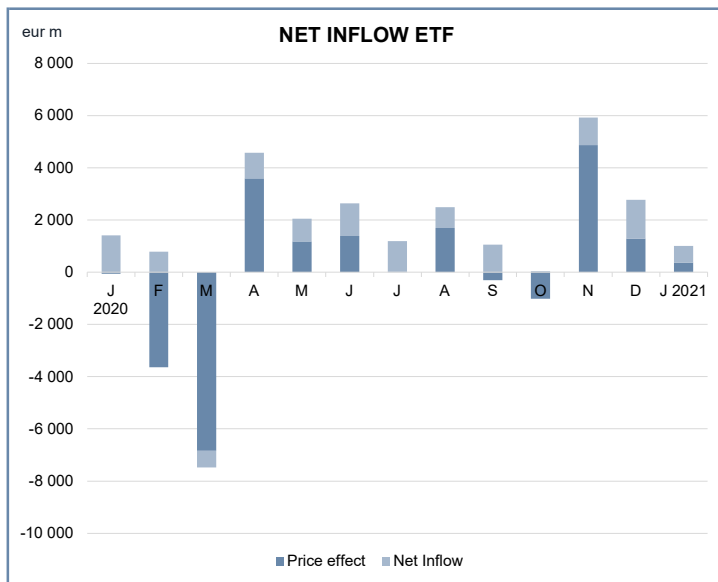
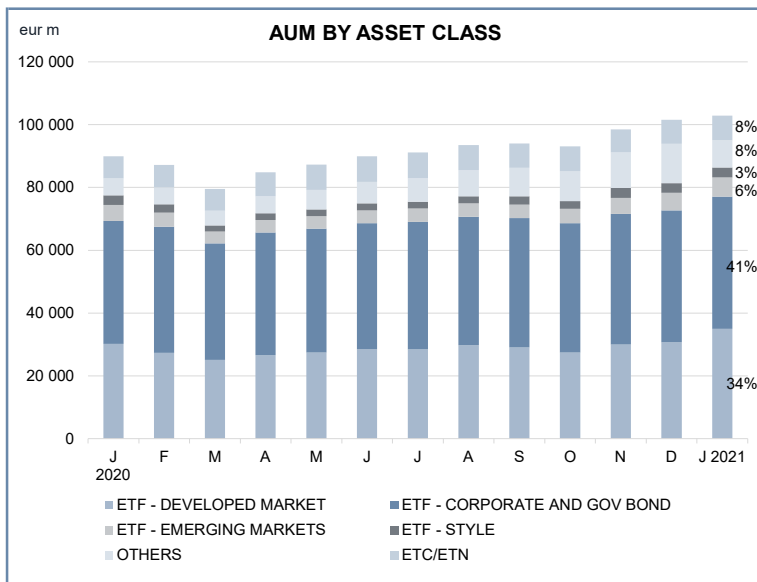
TRADING BY SIZE OF TURNOVER

SIZE OF TURNOVER		NOVEMBER 2020		DECEMBER 2020		YEAR 2021			
		Trades	Turnover eur m	Trades	Turnover eur m	Trades	% TOT	Turnover eur m	% TOT
-	500	89 010	20.5	78 906	18.3	105 327	13.1%	24.5	0.2%
500	1 000	66 826	49.6	56 349	42.2	74 220	9.2%	55.2	0.5%
1 000	2 000	126 807	180.4	92 589	130.5	121 730	15.1%	173.2	1.6%
2 000	3 000	77 678	191.0	56 354	138.3	78 922	9.8%	194.9	1.8%
3 000	4 000	46 098	159.8	37 523	130.1	49 890	6.2%	172.4	1.6%
4 000	5 000	41 298	187.1	36 092	163.5	47 481	5.9%	214.6	2.0%
5 000	6 000	38 372	208.8	27 739	150.7	38 163	4.7%	207.5	1.9%
6 000	7 000	27 090	174.5	22 036	142.3	26 654	3.3%	171.6	1.6%
7 000	8 000	22 671	169.3	16 729	124.7	22 325	2.8%	167.2	1.6%
8 000	9 000	16 589	140.7	12 453	105.7	16 723	2.1%	142.0	1.3%
9 000	10 000	16 969	162.3	13 643	130.6	17 407	2.2%	166.5	1.6%
10 000	15 000	60 618	731.4	46 862	565.5	60 582	7.5%	732.1	6.8%
15 000	20 000	31 483	547.6	24 360	423.0	29 442	3.7%	511.3	4.8%
20 000	25 000	25 889	576.5	18 267	404.6	21 539	2.7%	476.8	4.5%
25 000	30 000	13 956	381.5	11 135	303.1	14 474	1.8%	394.5	3.7%
30 000	35 000	10 563	342.3	7 720	249.6	9 127	1.1%	293.9	2.7%
35 000	40 000	8 276	309.6	6 269	234.5	8 281	1.0%	310.8	2.9%
40 000	45 000	6 594	280.3	4 863	205.7	7 197	0.9%	304.7	2.8%
45 000	50 000	7 097	338.1	4 855	232.1	5 964	0.7%	285.0	2.7%
50 000	75 000	24 932	1 480.5	19 255	1 144.4	23 261	2.9%	1 370.9	12.8%
75 000	100 000	9 791	847.6	7 456	647.7	9 130	1.1%	790.6	7.4%
100 000	125 000	6 367	698.9	4 682	513.4	5 951	0.7%	651.8	6.1%
125 000	150 000	2 901	396.8	2 448	336.7	2 607	0.3%	357.8	3.3%
150 000		8 016	2 856.4	6 667	2 076.4	7 532	0.9%	2 535.7	23.7%
TOTAL		785 891	11 431.5	615 252	8 613.6	803 929		10 705.3	

TRADING EVOLUTION



FOCUS



SPREAD

	SPREAD							
	BBO		5 000 €		15 000 €		25 000 €	
	SPREAD	% OBSER	SPREAD	% OBSER	SPREAD	% OBSER	SPREAD	% OBSER
ETF - DEVELOPED MARKET	0.11%	99.63%	0.11%	99.63%	0.11%	99.63%	0.12%	99.62%
EQUITY ITALY	0.13%	99.60%	0.13%	99.60%	0.13%	99.60%	0.14%	99.60%
EQUITY EUROPE - REGIONAL	0.10%	99.76%	0.10%	99.76%	0.10%	99.76%	0.11%	99.76%
EQUITY EUROPE - SINGLE COUNTRY	0.11%	99.67%	0.11%	99.67%	0.12%	99.66%	0.12%	99.65%
EQUITY WORLD	0.11%	99.54%	0.12%	99.54%	0.12%	99.52%	0.12%	99.51%
EQUITY NORTH AMERICA	0.10%	99.58%	0.10%	99.58%	0.11%	99.57%	0.11%	99.57%
EQUITY PACIFIC	0.14%	99.75%	0.15%	99.75%	0.16%	99.74%	0.16%	99.73%
EQUITY SHORT (DEVELOPED)	0.08%	99.77%	0.08%	99.77%	0.08%	99.77%	0.08%	99.76%
BUYWRITE - COVERED CALL	0.00%	0.00%	0.00%	0.00%	0.00%	0.00%	0.00%	0.00%
LEVERAGED LONG	0.10%	99.33%	0.11%	99.34%	0.11%	99.34%	0.11%	99.34%
LEVERAGED SHORT	0.11%	99.47%	0.12%	99.47%	0.12%	99.46%	0.13%	99.46%
PROTECTIVE PUT	0.00%	0.00%	0.00%	0.00%	0.00%	0.00%	0.00%	0.00%
ETF - EMERGING MARKETS	0.18%	99.46%	0.19%	99.46%	0.20%	99.43%	0.20%	99.40%
EQUITY EMERGING - AFRICA/MIDDLE EAST	0.67%	99.92%	0.73%	99.93%	0.76%	99.61%	0.77%	99.27%
EQUITY EMERGING - ASIA	0.20%	99.41%	0.21%	99.40%	0.22%	99.36%	0.23%	99.27%
EQUITY EMERGING - CENTRE/SOUTH AMERICA	0.48%	99.83%	0.50%	99.81%	0.52%	99.77%	0.53%	99.66%
EQUITY EMERGING - EAST EUROPE	0.34%	99.66%	0.36%	99.67%	0.37%	99.67%	0.37%	99.66%
EQUITY EMERGING - WORLD	0.14%	99.44%	0.14%	99.45%	0.15%	99.44%	0.15%	99.44%
EQUITY SHORT (EMERGING)	0.00%	0.00%	0.00%	0.00%	0.00%	0.00%	0.00%	0.00%
ETF - CORPORATE GOVERNMENT BONDS	0.12%	99.82%	0.12%	99.83%	0.13%	99.81%	0.14%	99.78%
INFLATION	0.14%	99.81%	0.15%	99.83%	0.15%	99.82%	0.16%	99.74%
LIQUIDITY	0.03%	99.51%	0.03%	99.50%	0.03%	99.49%	0.03%	99.49%
CORPORATE BOND - EURO	0.08%	99.87%	0.09%	99.88%	0.09%	99.88%	0.10%	99.88%
CORPORATE BOND - EX EURO	0.26%	99.92%	0.27%	99.90%	0.28%	99.89%	0.29%	99.86%
CORPORATE BOND - EMERGING	0.21%	99.99%	0.21%	99.99%	0.23%	99.99%	0.24%	99.99%
CORPORATE BOND - WORLD	0.18%	99.83%	0.19%	99.83%	0.21%	99.83%	0.23%	99.60%
CORPORATE BOND - HIGH YIELD	0.13%	99.72%	0.14%	99.70%	0.15%	99.67%	0.16%	99.60%
AGGREGATE BOND	0.18%	99.78%	0.19%	99.78%	0.20%	99.76%	0.21%	99.74%
BOND SHORT	0.12%	99.97%	0.12%	99.97%	0.12%	99.97%	0.12%	99.96%
BOND LEVERAGED LONG	0.09%	100.00%	0.09%	100.00%	0.09%	100.00%	0.09%	100.00%
BOND LEVERAGED SHORT	0.08%	99.82%	0.08%	99.82%	0.08%	99.82%	0.08%	99.80%
GOVERNMENT BONDS - EMERGING	0.17%	99.80%	0.18%	99.81%	0.19%	99.76%	0.20%	99.73%
GOVERNMENT BONDS - EURO	0.06%	99.87%	0.06%	99.88%	0.07%	99.86%	0.07%	99.86%
GOVERNMENT BONDS - ITALY	0.07%	99.84%	0.07%	99.84%	0.08%	99.84%	0.08%	99.84%
GOVERNMENT BONDS - WORLD	0.12%	99.86%	0.12%	99.86%	0.13%	99.82%	0.13%	99.79%
GOVERNMENT BONDS - EX EURO	0.09%	99.79%	0.09%	99.79%	0.10%	99.78%	0.10%	99.76%
ETF - STYLE	0.19%	99.80%	0.20%	99.79%	0.21%	99.78%	0.21%	99.74%
EQUITY STYLE (DEVELOPED)	0.19%	99.80%	0.20%	99.79%	0.20%	99.78%	0.21%	99.76%
EQUITY STYLE (EMERGING)	0.39%	99.89%	0.39%	99.50%	0.58%	99.10%	0.68%	98.29%
ETF - OTHERS	0.21%	99.44%	0.23%	99.41%	0.24%	99.26%	0.25%	99.03%
EQUITY SECTORS (DEVELOPED)	0.19%	99.77%	0.19%	99.76%	0.20%	99.75%	0.21%	99.72%
EQUITY SECTORS (EMERGING)	0.30%	99.46%	0.35%	99.42%	0.41%	98.08%	0.43%	97.02%
EQUITY THEMATIC	0.20%	99.25%	0.23%	99.21%	0.24%	98.99%	0.25%	98.65%
COMMODITIES	0.28%	99.84%	0.29%	99.83%	0.30%	99.82%	0.30%	99.82%
CREDIT INDICES	0.25%	100.00%	0.26%	100.00%	0.29%	100.00%	0.30%	100.00%
REAL ESTATE	0.22%	99.84%	0.23%	99.82%	0.24%	99.81%	0.25%	99.79%
LEVERAGED CREDIT INDICES	0.00%	0.00%	0.00%	0.00%	0.00%	0.00%	0.00%	0.00%
VOLATILITY INDICES	0.32%	99.37%	0.35%	99.35%	0.36%	99.00%	0.37%	98.93%
CURRENCIES INDICES	0.00%	0.00%	0.00%	0.00%	0.00%	0.00%	0.00%	0.00%
FLEXIBLE	0.33%	99.98%	0.35%	99.98%	0.43%	99.98%	0.47%	99.15%
MULTI ASSET	0.19%	99.85%	0.20%	99.85%	0.23%	99.78%	0.27%	99.11%
ETF	0.13%	99.70%	0.13%	99.69%	0.14%	99.67%	0.15%	99.63%

Data obtained from 1 minute snapshots of the trading book (5 levels) during trading days of the relevant month.

Market Spread: means the difference between bid and ask prices divided by the mid quote at which it was possible to buy and sell simultaneously the relevant amount.

% Obser: means the percentage of observations at which it would be possible to buy and sell simultaneously the relevant amount.

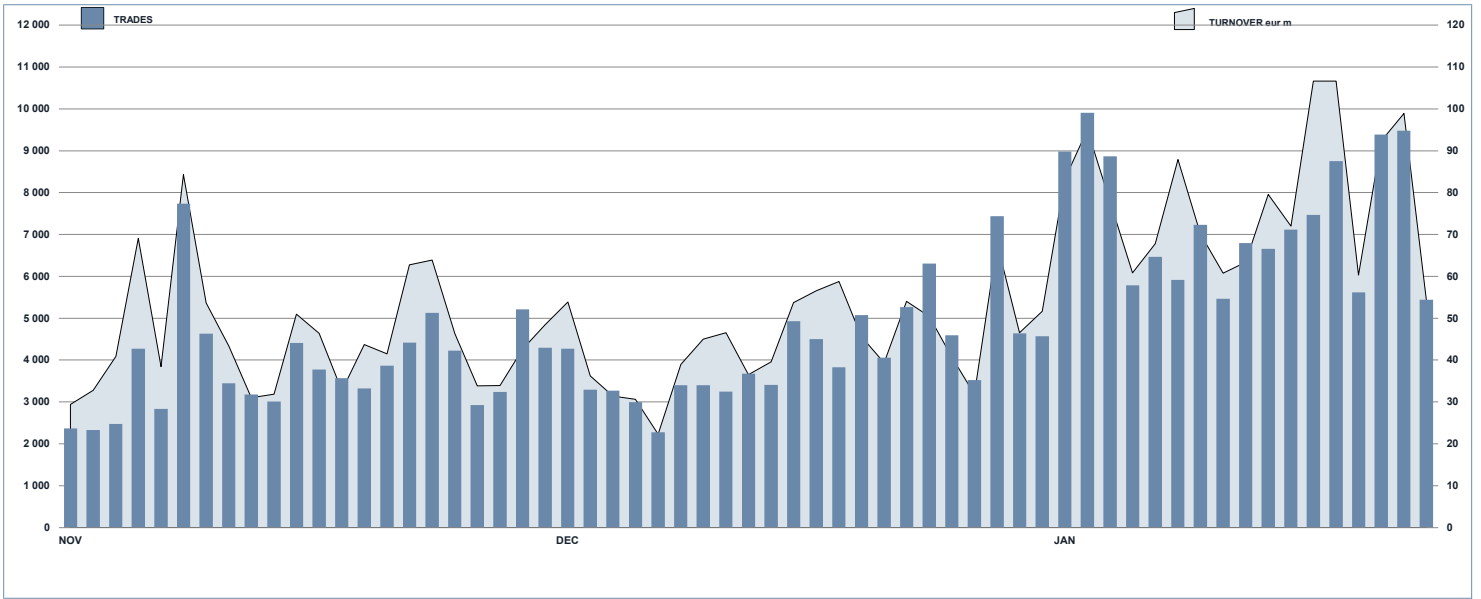
The average showed is the weighted average on AUM deposited in Monte Titoli is used: it's the average calculated taking into account the AUM (asset under management) deposited in Monte Titoli.

News

ETFPlus AUM reached €102.92 bn (+14.50% vs January 2020).

ETF AUM reached €95.02bn (+14.61% vs January 2020).

ESG INSTRUMENTS DAILY TURNOVER



MOST TRADED ESG INSTRUMENTS IN THE MONTH BY TRADES AND RELATIVE SPREAD

Name	Trading Code	ISIN	TRADES		SPREAD	
			number	% TOT	BBO	25 000 €
1 ISHARES GLOBAL CLEAN ENERGY UCITS ETF	INRG	IE00B1XNHC34	51 661	36.4%	0.08%	0.10%
2 L&G BATTERY VALUE-CHAIN UCITS ETF	BATT	IE00BF0M2Z96	8 901	6.3%	0.23%	0.32%
3 ISHARES HEALTHCARE INNOV UCITS ETF ACC	HEAL	IE00BYZK4776	7 384	5.2%	0.14%	0.19%
4 LYXOR NEW ENERGY (DR) UCITS ETF	ENER	FR0010524777	6 651	4.7%	0.25%	0.32%
5 ISHARES ELECTRIC VEH TEC UCITS ETF USD A	ECAR	IE00BGL86212	5 657	4.0%	0.17%	0.26%

MOST TRADED ESG INSTRUMENTS IN THE MONTH BY TURNOVER AND RELATIVE SPREAD

Name	Trading Code	ISIN	TURNOVER		SPREAD	
			eur m	% TOT	BBO	25 000 €
1 ISHARES GLOBAL CLEAN ENERGY UCITS ETF	INRG	IE00B1XNHC34	588	39.1%	0.08%	0.10%
2 L&G BATTERY VALUE-CHAIN UCITS ETF	BATT	IE00BF0M2Z96	72	4.8%	0.23%	0.32%
3 ISHARES AUTOMAT & ROBOTICS UCITS ETF ACC	RBOT	IE00BYZK4552	55	3.6%	0.12%	0.14%
4 ISHARES HEALTHCARE INNOV UCITS ETF ACC	HEAL	IE00BYZK4776	52	3.5%	0.14%	0.19%
5 LYXOR NEW ENERGY (DR) UCITS ETF	ENER	FR0010524777	49	3.2%	0.25%	0.32%

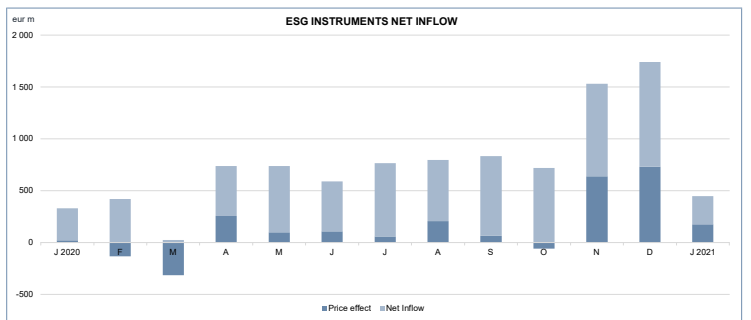
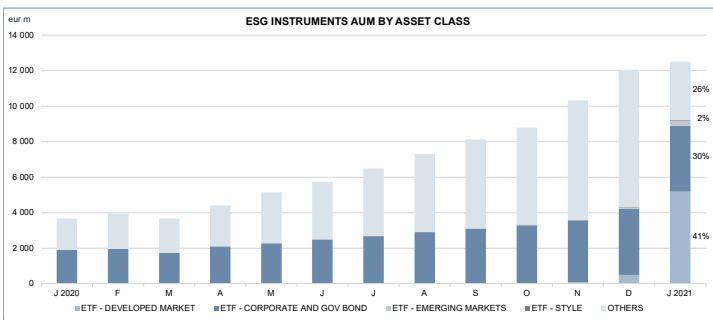
MOST TRADED ESG INSTRUMENTS IN THE YEAR BY TRADES AND RELATIVE SPREAD

Name	Trading Code	ISIN	TRADES		SPREAD	
			number	% TOT	BBO	25 000 €
1 ISHARES GLOBAL CLEAN ENERGY UCITS ETF	INRG	IE00B1XNHC34	51 661	36.4%	0.08%	0.10%
2 L&G BATTERY VALUE-CHAIN UCITS ETF	BATT	IE00BF0M2Z96	8 901	6.3%	0.23%	0.32%
3 ISHARES HEALTHCARE INNOV UCITS ETF ACC	HEAL	IE00BYZK4776	7 384	5.2%	0.14%	0.19%
4 LYXOR NEW ENERGY (DR) UCITS ETF	ENER	FR0010524777	6 651	4.7%	0.25%	0.32%
5 ISHARES ELECTRIC VEH TEC UCITS ETF USD A	ECAR	IE00BGL86212	5 657	4.0%	0.17%	0.26%

MOST TRADED ESG INSTRUMENTS IN THE YEAR BY TURNOVER AND RELATIVE SPREAD

Name	Trading Code	ISIN	TURNOVER		SPREAD	
			eur m	% TOT	BBO	25 000 €
1 ISHARES GLOBAL CLEAN ENERGY UCITS ETF	INRG	IE00B1XNHC34	588	39.1%	0.08%	0.10%
2 L&G BATTERY VALUE-CHAIN UCITS ETF	BATT	IE00BF0M2Z96	72	4.8%	0.23%	0.32%
3 ISHARES AUTOMAT & ROBOTICS UCITS ETF ACC	RBOT	IE00BYZK4552	55	3.6%	0.12%	0.14%
4 ISHARES HEALTHCARE INNOV UCITS ETF ACC	HEAL	IE00BYZK4776	52	3.5%	0.14%	0.19%
5 LYXOR NEW ENERGY (DR) UCITS ETF	ENER	FR0010524777	49	3.2%	0.25%	0.32%

FOCUS



At the moment the instruments on ETFplus that can be classified as "Sustainable" are all ETFs.

Markets Analysis
 Piazza degli Affari, 6 - 20123 Milano
 T +39 02 724261 | Fax +39 02 8646.4323
 e-mail: markets_analysis@borsaitaliana.it
 www.borsaitaliana.it

This document contains text, data, graphics, photographs, illustrations, artwork, names, logos, trade marks, service marks and information ("Information") connected with Borsa Italiana S.p.A. ("Borsa Italiana"). All reasonable efforts have been made to ensure that the Information in this document was correct at the time of publication. However, Borsa Italiana Spa accepts no liability for decisions taken, or systems-related or other work carried out by any party based on this document. The publication of this document does not represent solicitation, by Borsa Italiana, of public saving and is not to be considered as a recommendation by Borsa Italiana as to the suitability of the investment, if any, herein described.