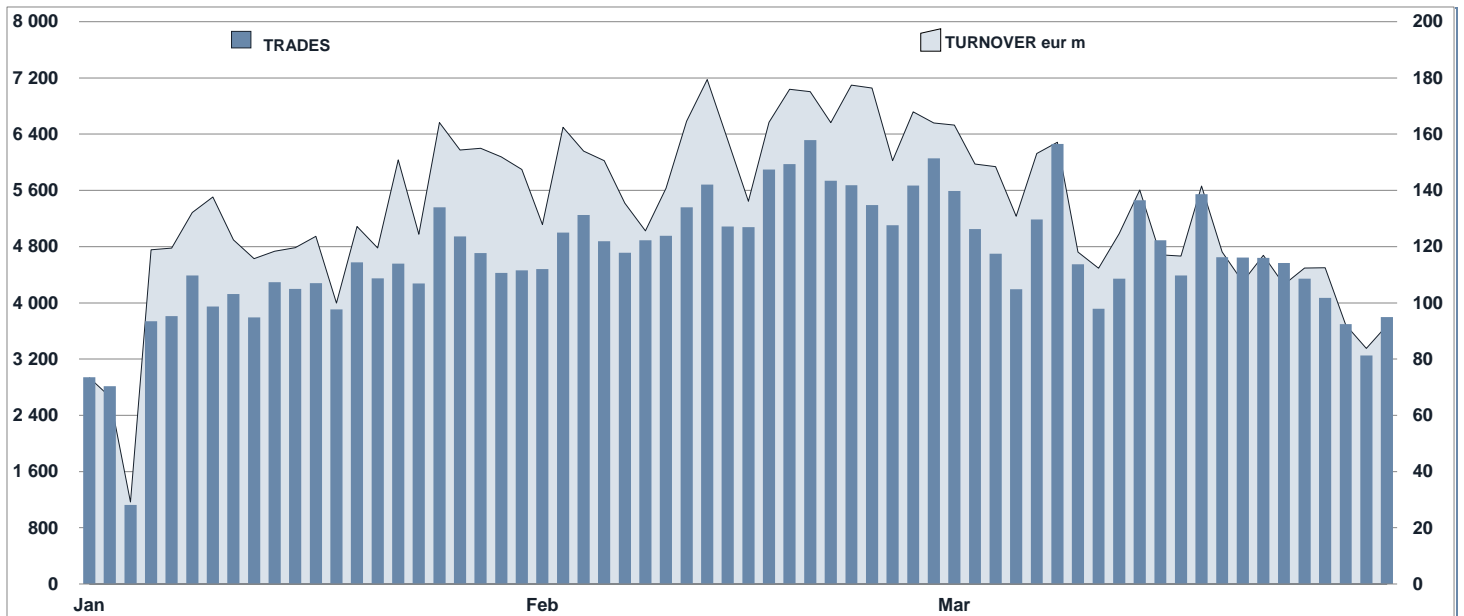




EuroTLX Statistics

March 2020

DAILY TURNOVER

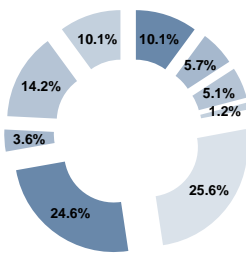


MAIN INDICATORS

	LISTED					TRADING						
	DEC 2019		FEBRUARY 2020		MARCH 2020		FEBRUARY 2020		MARCH 2020		JAN - MAR 2020	
	LISTED	NEW LISTED	LISTED	NEW LISTED	LISTED	NEW LISTED	TRADES	TURNOVER	TRADES	TURNOVER	TRADES	TURNOVER
	END of MONTH	END of MONTH	3EGIN of JAN 2020	END of MONTH	3EGIN of JAN 2020		number	eur m	number	eur m	number	eur m
EUROTLX												
FIXED INCOME	2 611	2 589	92	2 515	99	107 185	3 150.3	101 733	2 714.2	297 939	8 536.2	
CERT-X	3 112	3 402	546	3 480	736	85 935	1 172.2	49 250	468.4	210 772	2 633.1	
SHARES	619	617	-	617	-	15 060	129.2	14 810	98.9	41 135	327.7	
TOTAL	6 342	6 608	638	6 612	835	208 180	4 451.7	165 793	3 281.4	549 846	11 497.0	
FIXED INCOME - TYPE OF INSTRUMENT												
GOVERNMENT BONDS EU	271	274	7	254	7	1 449	56.9	1 604	59.7	4 447	155.8	
GOVERNMENT BONDS IT	142	144	8	144	11	6 528	440.7	8 940	462.2	22 807	1 378.1	
GOVERNMENT BONDS NON-EU	134	130	-	128	-	8 653	181.1	7 694	173.6	23 032	477.1	
GOVERNMENT BONDS SOVEREIGN	27	29	2	29	2	949	39.5	2 230	51.5	3 763	109.4	
BANKING BONDS NON EURO BOND	679	658	18	643	20	43 038	962.5	30 299	571.6	107 308	2 281.7	
CORPORATE BONDS	637	635	15	618	15	24 558	685.0	25 898	564.1	72 282	1 905.5	
EMERGING MARKETS BONDS	89	90	5	90	5	4 083	90.5	5 586	85.7	11 888	234.7	
FINANCIALS BONDS	357	364	34	356	36	5 222	426.1	7 256	470.4	17 096	1 232.5	
SUPRANATIONAL BONDS	275	265	3	253	3	12 705	268.1	12 226	275.3	35 316	761.3	
TOTAL	2 611	2 589	92	2 515	99	107 185	3 150.3	101 733	2 714.2	297 939	8 536.2	
FIXED INCOME - TYPE OF STRUCTURE												
STRUCTURED INTEREST RATE	205	202	4	199	5	16 768	509.5	11 237	286.3	41 334	1 193.4	
PLAIN VANILLA	2 153	2 130	80	2 062	84	79 604	2 357.5	82 255	2 196.6	228 473	6 581.9	
INFLATION LINKED	69	68	-	68	-	384	14.5	836	27.3	1 554	56.2	
INDEX LINKED	69	72	4	70	5	1 965	32.5	855	13.4	4 435	73.9	
FUND LINKED	14	15	1	15	1	444	13.5	92	1.9	835	22.7	
FIXED FLOATER	72	72	2	73	3	7 653	213.1	6 271	185.1	20 504	587.7	
EQUITY LINKED	3	3	-	3	-	5	0.2	1	0.0	7	0.5	
CURRENCY LINKED	5	5	-	5	-	40	0.9	70	1.3	157	2.9	
CREDIT PROTECTION	14	15	1	13	1	127	3.6	61	1.1	291	8.2	
COMMODITY LINKED	5	5	-	5	-	132	2.3	41	0.7	202	3.5	
OTHER STRUCTURES	2	2	-	2	-	63	2.7	14	0.5	147	5.3	
TOTAL	2 611	2 589	92	2 515	99	107 185	3 150.3	101 733	2 714.2	297 939	8 536.2	

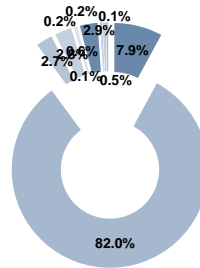
FOCUS ON LISTED BONDS - END OF MONTH

LISTED BY TYPE OF INSTRUMENT



- GOVERNMENT BONDS EU
- GOVERNMENT BONDS IT
- GOVERNMENT BONDS NON-EU
- GOVERNMENT BONDS SOVEREIGN
- BANKING BONDS NON EUROBOND
- CORPORATE BONDS
- EMERGING MARKETS BONDS
- FINANCIALS BONDS
- SUPRANATIONAL BONDS

LISTED BY TYPE OF STRUCTURE



- STRUCTURED INTEREST RATE
- PLAIN VANILLA
- INFLATION LINKED
- INDEX LINKED
- FUND LINKED
- FIXED FLOATER
- EQUITY LINKED
- CURRENCY LINKED
- CREDIT PROTECTION
- COMMODITY LINKED
- OTHER STRUCTURES

TYPE OF INSTRUMENT - MOST TRADED BONDS IN TERMS OF TURNOVER

GOVERNMENT BONDS EU - MARCH 2020				GOVERNMENT BONDS IT - MARCH 2020			
ISIN	NAME	eur m	TRADES	ISIN	NAME	eur m	TRADES
ES00000127H7	BONOS 1.15% 30LG20	6.8	39	IT0005217390	BTP 2.8% 01MZ67	41.7	696
ES00000123X3	OBLIGACIONES 4.4% 31OT23	3.5	86	IT0005402117	BTP 1.45% 01MZ36	27.7	629
FR0012968337	OAT 0.25% 25NV20	2.1	28	IT0003934657	BTP 4% 01FB37	11.4	146
DE0001135432	BUND 3.25% 04LG42	2.0	28	IT0005398406	BTP 2.45% 01ST50	11.1	375
PT0TEBOE0020	OT 4.1% 15FB45	1.9	25	IT0001278511	BTP 5.25% 01NV29	10.8	84
GOVERNMENT BONDS NON EU - MARCH 2020				GOVERNMENT BONDS SOVEREIGN - MARCH 2020			
ISIN	NAME	eur m	TRADES	ISIN	NAME	eur m	TRADES
US912810RK60	USA - T-BOND 2.5% 15FB45	47.2	1 385	US465410BG26	ITALIA 5.375% 15GN33	16.8	551
XS1575968026	OMAN 6.5% 08MZ47	11.5	83	XS2109813142	ROMANIA 3.375% 28GE50	7.3	549
US912828S273	USA - T-NOTE 1.125% 30GN21	8.0	145	US465410AH18	ITALIA 6.875% 27ST23	6.9	144
US912828S927	USA - T-NOTE 1.25% 31LG23	6.0	154	XS1085735899	PORTOGALLO 5.125% 15OT24	5.7	98
US912828A270	USA - T-NOTE 1.5% 15AG26	5.3	178	XS1768074319	ROMANIA 3.375% 08FB38	4.1	323
BANKING BONDS NON EUROBOND - MARCH 2020				CORPORATE BONDS - MARCH 2020			
ISIN	NAME	eur m	TRADES	ISIN	NAME	eur m	TRADES
IT0005087116	UCG TV CALL SUB 03MG25	67.0	2 940	XS0214965963	TELECOM ITALIA 5.25% 17MZ55	47.3	440
IT0005158677	BANCO BPM - FIX FLOAT CAP 29GE21	24.2	1 089	XS1388625425	FIAT CHRYSLER AUTOM. 3.75% 29MZ24	37.4	376
IT0005118838	ISP-TV SUB 30GN22	22.4	1 565	XS0161100515	TELECOM ITALIA FINANCE 7.75% 24GE33	31.2	2 178
IT0005187890	BANCO BPM - FIX FLOAT CAP 22GN22	19.6	1 207	XS1435297202	SALINI IMPREGILO 3.75% CALL 24GN21	24.0	239
XS1928480166	MEDIOBANCA STEP UP 25GE24	15.4	1 047	XS1551347393	JAGUAR LAND ROVER 2.2% CALL 15GE24	20.2	256
EMERGING MARKETS BONDS - MARCH 2020				TYPE OF INSTRUMENT - TURNOVER			
ISIN	NAME	eur m	TRADES				
US900123AT75	TURCHIA 8% 14FB34	15.4	1 584				
US1057568K57	BRASILE 7.125% 20GE37	7.1	618				
XS008543193	RUSSIA 12.75% PUT 24GN28	6.0	213				
US105756BR01	BRASILE 5.625% CALL 07GE41	4.9	49				
ZAG00030404	SUDAFRICA 6.25% 31MZ36	3.7	622				
FINANCIALS BONDS - MARCH 2020							
ISIN	NAME	eur m	TRADES				
XS1109765005	ISP 3.928% SUB 15ST26	56.6	550				
XS1428773763	GENERALI-FIX FLOAT CALL SUB 08GN48	29.4	266				
XS1733289406	CATTOLICA-FIX FLOAT CALL SUB 14DC47	27.1	263				
XS1206977495	UNIPOL GRUPPO 3% 18MZ25	25.3	251				
XS1311440082	GENERALI-FIX FLOAT CALL SUB 27OT47	20.0	181				
SUPRANATIONAL BONDS - MARCH 2020							
ISIN	NAME	eur m	TRADES				
IT0005374043	CDP FIX FLOAT 28GN26	16.7	1 155				
XS1507486584	BEI 1.5% CALL 21NV26	10.9	534				
XS1524609531	BEI 5.5% 23GE23	8.9	576				
XS0765766703	BEI-TV 04GE22	7.7	129				
IT0005090995	CDP FIX FLOAT 20MZ22	7.7	192				

MOST TRADED BONDS BY CURRENCY IN TERMS OF TURNOVER

EUR - MARCH 2020				USD - MARCH 2020					
ISIN	NAME	CURRI eur m	TRADES	ISIN	NAME	CURRI eur m	TRADES		
IT0005087116	UCG TV CALL SUB 03MG25	EUR	67.0	2 940	US912810RK60	USA - T-BOND 2.5% 15FB45	USD	47.2	1 385
XS1109765005	ISP 3.928% SUB 15ST26	EUR	56.6	550	US465410BG26	ITALIA 5.375% 15GN33	USD	16.8	551
XS0214965963	TELECOM ITALIA 5.25% 17MZ55	EUR	47.3	440	US900123AT75	TURCHIA 8% 14FB34	USD	15.4	1 584
IT0005217390	BTP 2.8% 01MZ67	EUR	41.7	696	XS1885506813	TOYOTA MOTOR CREDIT STEP-UP 24OT25	USD	13.9	766
XS1388625425	FIAT CHRYSLER AUTOM. 3.75% 29MZ24	EUR	37.4	376	XS1492797334	IBRD STEP UP CALL 20OT26	USD	12.8	760
GBP - MARCH 2020				OTHER CURRENCIES - MARCH 2020					
ISIN	NAME	CURRI eur m	TRADES	ISIN	NAME	CURRI eur m	TRADES		
XS1679039328	BEI 0.875% 15DC23	GBP	3.7	42	XS1524609531	BEI 5.5% 23GE23	MXN	8.9	576
XS1416470323	BEI 1.125% 07ST21	GBP	2.8	15	XS1605368536	BEI 8% 05MG27	ZAR	5.7	380
GB00BN65R198	GILT 2% 22LG20	GBP	1.8	66	XS1347679448	BEI 1.75% 12NV26	SEK	5.6	36
XS0295479983	BEI 4.5% 07MZ44	GBP	1.4	11	XS1115184753	BEI 9.25% 03OT24	TRY	4.4	456
XS1068966073	BEI TV 21MG21	GBP	1.3	59	XS1342860167	BEI 4.75% 19GE21	MXN	4.0	227

News

- 3 EU Government Bonds
- 2 banking bonds non Eurobonds
- 2 other bonds:
 - XS1809927235 DB-FIX TO CMS CAP&FLOOR 27MZ24
 - XS2087987650 SG ISSUER - SOL DATA AUTOCALL EUR 10MZ25

Markets Analysis
 Piazza degli Affari, 6 - 20123 Milano
 T +39 02 724261 | Fax +39 02 8646.4323
 e-mail: markets_analysis@borsaitaliana.it
 www.borsaitaliana.it

This document contains text, data, graphics, photographs, illustrations, artwork, names, logos, trade marks, service marks and information ("Information") connected with Borsa Italiana S.p.A. ("Borsa Italiana"). All reasonable efforts have been made to ensure that the Information in this document was correct at the time of publication. However, Borsa Italiana Spa accepts no liability for decisions taken, or systems-related or other work carried out by any party based on this document. The publication of this document does not represent solicitation, by Borsa Italiana, of public saving and is not to be considered as a recommendation by Borsa Italiana as to the suitability of the investment, if any, herein described.