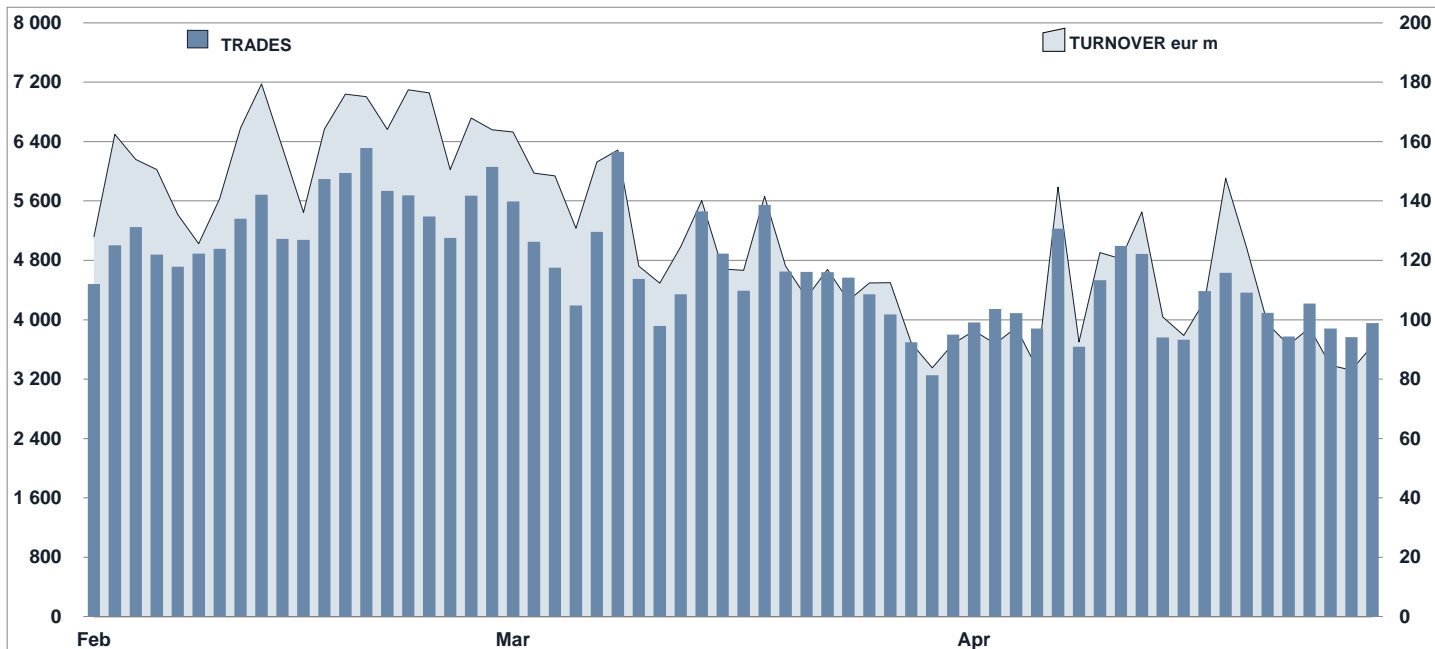
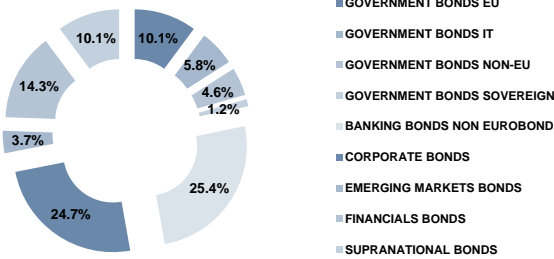


EuroTLX Statistics
April 2020
DAILY TURNOVER

MAIN INDICATORS
LISTED
TRADING

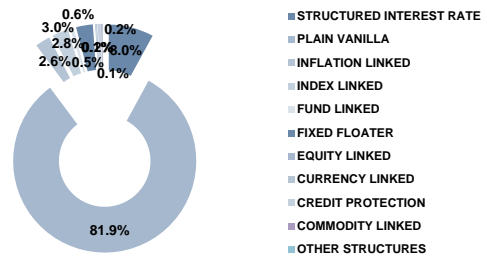
	DEC 2019		MARCH 2020		APRIL 2020		MARCH 2020		APRIL 2020		JAN - APR 2020	
	LISTED	END OF MONTH	LISTED	NEW LISTED	LISTED	NEW LISTED	TRADES	TURNOVER	TRADES	TURNOVER	TRADES	TURNOVER
		END OF MONTH	END OF MONTH	BEGIN OF JAN 2020	END OF MONTH	BEGIN OF JAN 2020	number	eur m	number	eur m	number	eur m
EUROTLX												
FIXED INCOME	2 611	2 515	99	2 464	109	101 733	2 714.2	83 907	2 106.1	381 846	10 642.3	
CERT-X	3 112	3 480	736	3 646	1 032	49 250	468.4	37 957	317.4	248 729	2 950.5	
SHARES	619	617	-	612	-	14 810	98.9	15 663	107.0	56 798	434.7	
TOTAL	6 342	6 612	835	6 722	1 141	165 793	3 281.4	137 527	2 530.5	687 373	14 027.4	
FIXED INCOME - TYPE OF INSTRUMENT												
GOVERNMENT BONDS EU	271	254	7	250	8	1 604	59.7	993	39.2	5 440	195.0	
GOVERNMENT BONDS IT	142	144	11	144	15	8 940	462.2	8 441	419.6	31 248	1 797.8	
GOVERNMENT BONDS NON-EU	134	128	-	113	-	7 694	173.6	6 397	141.8	29 429	618.9	
GOVERNMENT BONDS SOVEREIGN	27	29	2	29	2	2 230	51.5	1 421	25.8	5 184	135.2	
BANKING BONDS NON EUROBOND	679	643	20	627	21	30 299	571.6	21 025	360.0	128 333	2 641.7	
CORPORATE BONDS	637	618	15	609	15	25 898	564.1	28 211	596.5	100 493	2 502.0	
EMERGING MARKETS BONDS	89	90	5	90	6	5 586	85.7	4 705	60.1	16 593	294.7	
FINANCIALS BONDS	357	356	36	352	39	7 256	470.4	4 715	296.2	21 811	1 528.7	
SUPRANATIONAL BONDS	275	253	3	250	3	12 226	275.3	7 999	166.9	43 315	928.2	
TOTAL	2 611	2 515	99	2 464	109	101 733	2 714.2	83 907	2 106.1	381 846	10 642.3	
FIXED INCOME - TYPE OF STRUCTURE												
STRUCTURED INTEREST RATE	205	199	5	196	6	11 237	286.3	8 188	200.3	49 522	1 393.7	
PLAIN VANILLA	2 153	2 062	84	2 017	91	82 255	2 196.6	70 154	1 763.9	298 627	8 345.8	
INFLATION LINKED	69	68	-	65	-	836	27.3	294	11.8	1 848	68.0	
INDEX LINKED	69	70	5	70	7	855	13.4	875	14.0	5 310	87.9	
FUND LINKED	14	15	1	15	1	92	1.9	21	0.6	856	23.3	
FIXED FLOATER	72	73	3	73	3	6 271	185.1	4 105	111.8	24 609	699.4	
EQUITY LINKED	3	3	-	3	-	1	0.0	-	-	7	0.5	
CURRENCY LINKED	5	5	-	5	-	70	1.3	47	0.5	204	3.5	
CREDIT PROTECTION	14	13	1	13	1	61	1.1	131	1.2	422	9.4	
COMMODITY LINKED	5	5	-	5	-	41	0.7	88	1.9	290	5.4	
OTHER STRUCTURES	2	2	-	2	-	14	0.5	4	0.0	151	5.3	
TOTAL	2 611	2 515	99	2 464	109	101 733	2 714.2	83 907	2 106.1	381 846	10 642.3	

FOCUS ON LISTED BONDS - END OF MONTH

LISTED BY TYPE OF INSTRUMENT



LISTED BY TYPE OF STRUCTURE



TYPE OF INSTRUMENT - MOST TRADED BONDS IN TERMS OF TURNOVER

GOVERNMENT BONDS EU - APRIL 2020				GOVERNMENT BONDS IT - APRIL 2020			
ISIN	NAME	eur m	TRADES	ISIN	NAME	eur m	TRADES
FR0012968337	OAT 0.25% 25NV20	5.9	33	IT0005398406	BTP 2.45% 01ST50	24.0	536
FR0010192997	OAT 3.75% 25AP21	3.0	28	IT0005210650	BTP 1.25% 01DC26	22.4	656
ES00000127H7	BONOS 1.15% 30LG20	3.0	34	IT0005217390	BTP 2.8% 01MZ67	20.1	466
ES00000123X3	OBLIGACIONES 4.4% 31OT23	1.9	48	IT0005170839	BTP 1.6% 01GN26	13.6	372
DE0001030542	BUND@ 0.1% 15AP23	1.5	15	IT0005090318	BTP 1.5% 01GN25	13.6	365

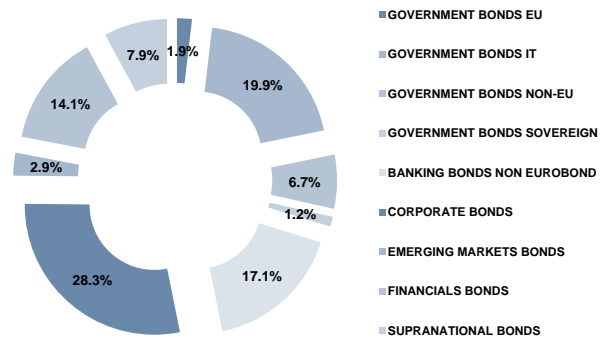
GOVERNMENT BONDS NON EU - APRIL 2020				GOVERNMENT BONDS SOVEREIGN - APRIL 2020			
ISIN	NAME	eur m	TRADES	ISIN	NAME	eur m	TRADES
US912810RK60	USA - T-BOND 2.5% 15FB45	59.9	993	US465410BG26	ITALIA 5.375% 15GN33	6.3	278
XS1575968026	OMAN 6.5% 08MZ47	9.0	73	XS1968706876	ROMANIA 4.625% 03AP49	4.1	204
US912828S273	USA - T-NOTE 1.125% 30GN21	5.0	120	XS0222189564	ITALIA-CMS CAP&FLOOR 15GN20	3.2	19
US912828S927	USA - T-NOTE 1.25% 31LG23	4.7	75	XS1768074319	ROMANIA 3.375% 08FB38	3.0	271
XS0205537581	ARGENTINA STEP UP SINK 31DC38	4.6	1 139	US465410AH18	ITALIA 6.875% 27ST23	2.9	88

BANKING BONDS NON EUROBOND - APRIL 2020				CORPORATE BONDS - APRIL 2020			
ISIN	NAME	eur m	TRADES	ISIN	NAME	eur m	TRADES
IT0005087116	UCG TV CALL SUB 03MG25	53.6	1 593	XS1388625425	FIAT CHRYSLER AUTOM. 3.75% 29MZ24	48.1	476
IT0005118838	ISP-TV SUB 30GN22	19.8	1 039	XS0213101073	PETROLEOS MEXICANOS 5.5% 24FB25	30.8	1 772
IT0005158677	BANCO BPM - FIX FLOAT CAP 29GE21	14.0	685	XS1088515207	FIAT CHRYSLER FIN EUR 4.75% 15LG22	26.1	253
XS1492797334	IBRD STEP UP CALL 20OT26	13.0	807	XS1711584430	SAIPEM FINANCE INT 2.625% CALL 07GE25	25.0	261
IT0005187890	BANCO BPM - FIX FLOAT CAP 22GN22	11.0	793	US345370CA64	FORD MOTOR 7.45% 16LG31	20.2	1 642

EMERGING MARKETS BONDS - APRIL 2020				FINANCIALS BONDS - APRIL 2020			
ISIN	NAME	eur m	TRADES	ISIN	NAME	eur m	TRADES
US900123AT75	TURCHIA 8% 14FB34	13.9	1 401	XS1733289406	CATTOLICA-FIX FLOAT CALL SUB 14DC47	17.2	167
US900123AW05	TURCHIA 7.375% 05FB25	6.1	645	XS1426039696	UCG-FIX TO CMS CALL SUB 03GE27	15.2	144
XS1218289103	MESSICO 4.0% CALL 15MZ15	6.1	65	XS1109765005	ISP 3.928% SUB 15ST26	15.0	139
US91086QAZ19	MESSICO 5.75% CALL 12OT10	4.6	427	XS1428773763	GENERALI-FIX FLOAT CALL SUB 08GN48	13.1	116
XS1629918415	TURCHIA 3.25% 14GN25	3.8	42	XS1206977495	UNIPOL GRUPPO 3% 18MZ25	12.1	102

SUPRANATIONAL BONDS - APRIL 2020			
ISIN	NAME	eur m	TRADES
IT0005374043	CDP FIX FLOAT 28GN26	12.4	736
XS1507486584	BEI 1.5% CALL 21NV26	10.4	473
IT0005090995	CDP FIX FLOAT 20MZ22	10.1	275
XS1551882860	BEI FIX FLOAT CAP 16FB24	8.7	343
XS1570406691	IBRD FIX FLOAT MULTICAP 31MZ24	6.7	202

TYPE OF INSTRUMENT - TURNOVER



MOST TRADED BONDS BY CURRENCY IN TERMS OF TURNOVER

EUR - APRIL 2020				USD - APRIL 2020					
ISIN	NAME	CURRI eur m	TRADES	ISIN	NAME	CURRI eur m	TRADES		
IT0005087116	UCG TV CALL SUB 03MG25	EUR	53.6	1 593	US912810RK60	USA - T-BOND 2.5% 15FB45	USD	59.9	993
XS1388625425	FIAT CHRYSLER AUTOM. 3.75% 29MZ24	EUR	48.1	476	US345370CA64	FORD MOTOR 7.45% 16LG31	USD	20.2	1 642
XS0213101073	PETROLEOS MEXICANOS 5.5% 24FB25	EUR	30.8	1 772	US900123AT75	TURCHIA 8% 14FB34	USD	13.9	1 401
XS1088515207	FIAT CHRYSLER FIN EUR 4.75% 15LG22	EUR	26.1	253	XS1492797334	IBRD STEP UP CALL 20OT26	USD	13.0	807
XS1711584430	SAIPEM FINANCE INT 2.625% CALL 07GE25	EUR	25.0	261	XS1507486584	BEI 1.5% CALL 21NV26	USD	10.4	473

GBP - APRIL 2020				OTHER CURRENCIES - APRIL 2020					
ISIN	NAME	CURRI eur m	TRADES	ISIN	NAME	CURRI eur m	TRADES		
XS1068966073	BEI TV 21MG21	GBP	0.9	43	XS1115184753	BEI 9.25% 03OT24	TRY	4.1	388
GB00BN65R198	GILT 2% 22LG20	GBP	0.6	22	XS1075219763	BEI 8.75% 18ST21	TRY	3.4	295
XS1679039328	BEI 0.875% 15DC23	GBP	0.4	18	AU3CB0241784	IBRD 2.8% 12GE22	AUD	3.2	128
GB00B16NNR78	GILT 4.25% 07DC27	GBP	0.3	4	AU3CB0234987	BEI 2.8% 15GE21	AUD	2.4	74
GB00B7Z53659	GILT 2.25% 07ST23	GBP	0.2	9	ZAG000030404	SUDAFRICA 6.25% 31MZ36	ZAR	2.2	349

News

5 EU Government Bonds
 1 banking bonds non Eurobonds
 1 emerging market bonds
 GR0118020685 GRECIA 2% 22AP27

3 other bonds:
 XS2011149932 DB - TV FLOOR 31OT21
 XS2125542600 GSI - ISTOXX GLOBAL ESG TREND 30 28AP25
 XS2125613393 GSI - ESXX SEL DIV 30 16OT23

Markets Analysis
 Piazza degli Affari, 6 - 20123 Milano
 T +39 02 724261 | Fax +39 02 8646.4323
 e-mail: markets_analysis@borsaitaliana.it
 www.borsaitaliana.it

This document contains text, data, graphics, photographs, illustrations, artwork, names, logos, trade marks, service marks and information ("Information") connected with Borsa Italiana S.p.A. ("Borsa Italiana"). All reasonable efforts have been made to ensure that the Information in this document was correct at the time of publication. However, Borsa Italiana SpA accepts no liability for decisions taken, or systems-related or other work carried out by any party based on this document. The publication of this document does not represent solicitation, by Borsa Italiana, of public saving and is not to be considered as a recommendation by Borsa Italiana as to the suitability of the investment, if any, herein described.