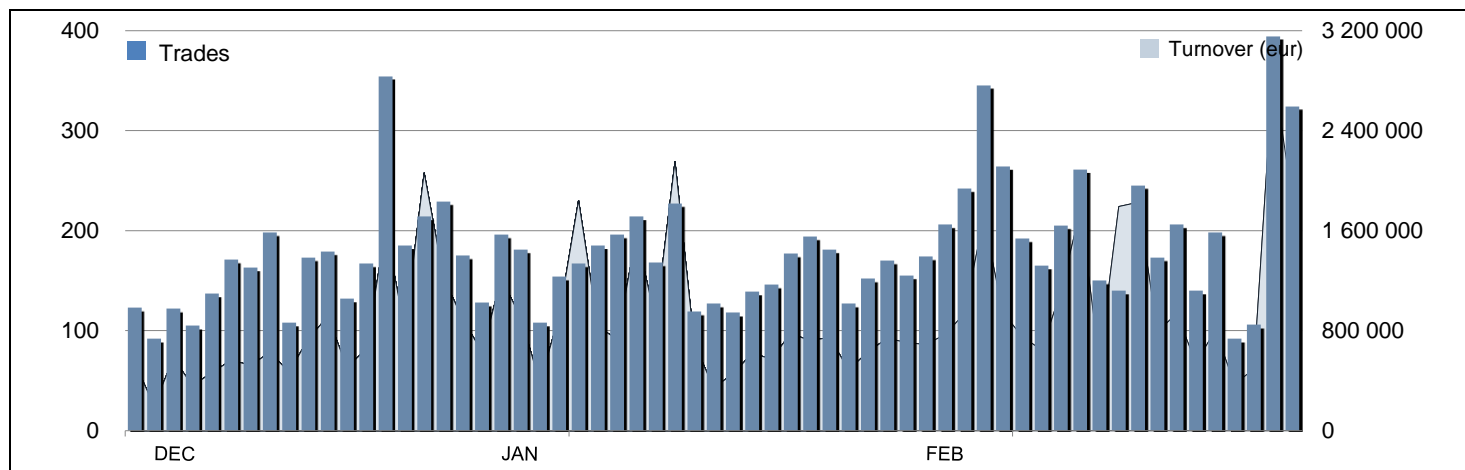




Closed Ended Funds and Permanent Capital Vehicles Stat

February 2020

MIV - TRADING EVOLUTION



CLOSED ENDED FUNDS - MAIN INDICATORS

	28 FEBRUARY 2020		FEBRUARY 2020		JAN-FEB 2020	
	PRICE (eur)	CAPITALISATION (eur)	TRADES	TURNOVER (eur)	TRADES	TURNOVER (eur)
QF ALPHA IMMOBILIARE	1 106.7	114 957 916	140	558 649	246	989 311
QF AMUNDI RE EUROPA	1 236.5	104 920 564	546	4 760 971	851	6 820 921
QF AMUNDI RE ITALIA	847.5	56 508 001	183	720 091	302	1 259 939
QF ATLANTIC 1	231.7	120 849 093	680	3 704 221	1 273	8 423 756
QF IMMOBILIARE DINAMICO	89.0	129 444 399	670	2 001 869	1 646	5 357 047
QF IMMOBILIUM 2001	1 617.5	42 054 133	40	159 080	122	455 433
QF MEDIOLANUM RE A	4.2	33 229 112	60	190 949	134	364 754
QF MEDIOLANUM RE B	2.6	176 307 222	117	650 517	264	1 421 432
QF OPPORTUNITA ITALIA	1 295.3	74 798 289	626	2 779 201	1 232	5 249 818
QF POLIS	61.0	7 869 839	534	1 822 759	609	1 984 841
QF RISPARMIO IMMOBILIARE UNO ENERGIA	3 700.0	17 760 000	-	-	1	3 700
QF SOCRATE	235.9	60 884 081	206	776 729	383	1 446 305
QF UNICREDIT IMM UNO	208.5	33 365 313	222	1 126 920	442	2 155 720
QF VALORE IMM GLOBAL	613.8	18 934 649	133	584 015	219	786 007
TOTAL		991 882 610	4 157	19 835 971	7 724	36 718 985

PERMANENT CAPITAL VEHICLES LISTED ON MIV - MAIN INDICATORS

	28 FEBRUARY 2020		FEBRUARY 2020		JAN-FEB 2020	
	PRICE (eur)	CAPITALISATION (eur)	TRADES	TURNOVER (eur)	TRADES	TURNOVER (eur)
NB AURORA	10.3	154 479 184	65	2 304 164	99	4 317 015

MIV

MIV - Market for Investment Vehicles – is the reference market for the listing of close-end funds and permanent capital vehicles that invests in real economy. MIV can accommodate a wide range of investment strategies:

- Private Equity
- Public and Private Debt
- Venture Capital
- Industry-specific strategy: Real Estate, Infrastructure, Healthcare, etc.
- Multi-strategy

In addition, could be listed on MIV:

- Special Purpose Acquisition Companies (SPACs)
- Investment vehicles other than Alternative Investment Funds (AIFs), including REITs that have not already fully invested their capital

PERMANENT CAPITAL VEHICLES LISTED ON AIM ITALIA - MAIN INDICATORS

	28 FEBRUARY 2020		FEBRUARY 2020		JAN-FEB 2020	
	PRICE (eur)	CAPITALISATION (eur)	TRADES	TURNOVER (eur)	TRADES	TURNOVER (eur)
4AIM SICAF	346.0	17 144 300	11	19 072	31	70 543

REAL ESTATE INVESTMENT TRUSTS (SIQ) LISTED ON MTA - MAIN INDICATORS

	28 FEBRUARY 2020		FEBRUARY 2020		JAN-FEB 2020	
	PRICE (eur)	CAPITALISATION (eur)	TRADES	TURNOVER (eur)	TRADES	TURNOVER (eur)
AEDES	1.2	38 398 125	2 709	5 003 097	8155	17 668 165
COIMA RES	8.8	319 404 241	1 959	6 078 061	3525	13 642 786
COVIVIO	98.7	FOREIGN	584	2 902 240	965	4 518 196
IGD - IMMOBILIARE GRANDE DISTRIBUZIONE	5.5	602 564 009	10 165	30 597 500	16591	44 888 214
NOVA RE	3.1	33 968 055	242	289 809	466	492 344
RESTART	0.6	18 979 456	1 349	1 981 323	4673	7 557 246
TOTAL		1 013 313 886	17 008	46 852 031	34 375	88 766 951

