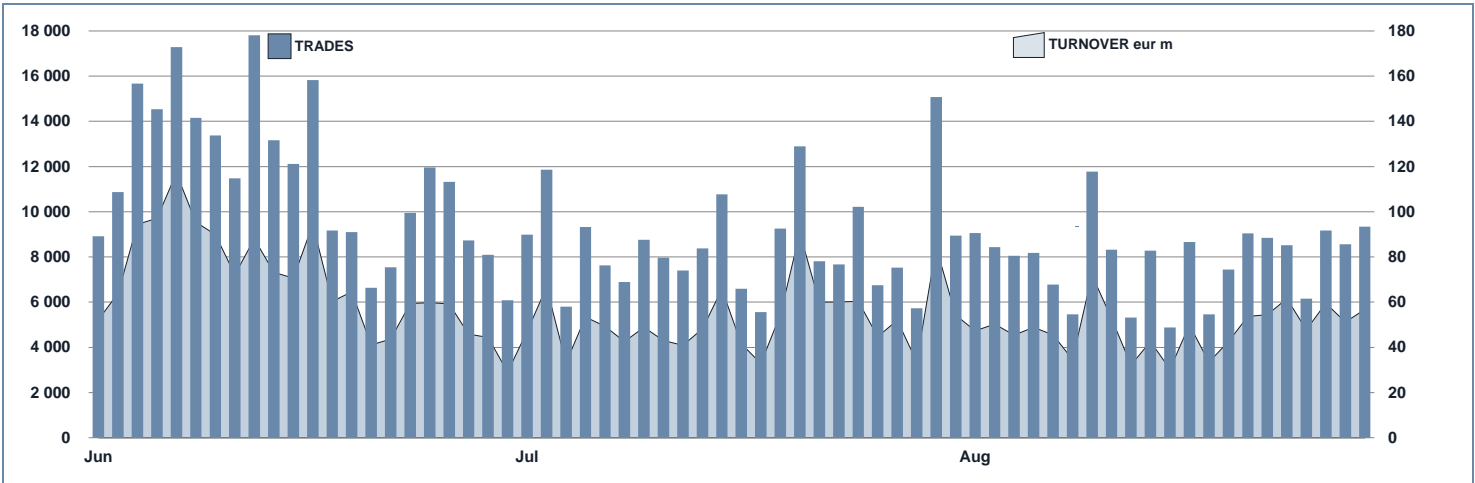




Sedex Statistics

August 2020

SECURITISED DERIVATIVES DAILY TURNOVER



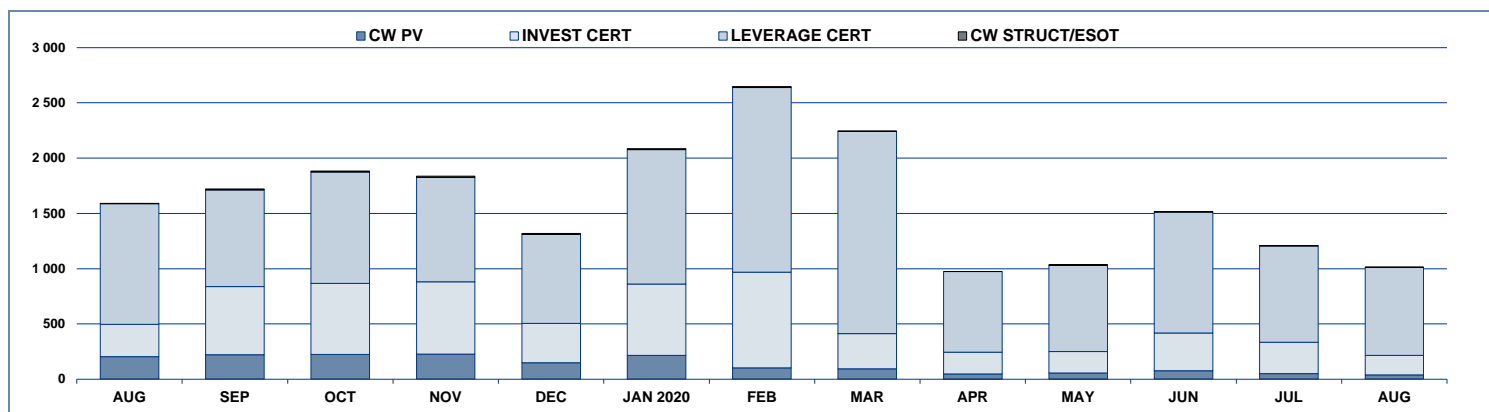
MAIN INDICATORS

LISTED SeDeX

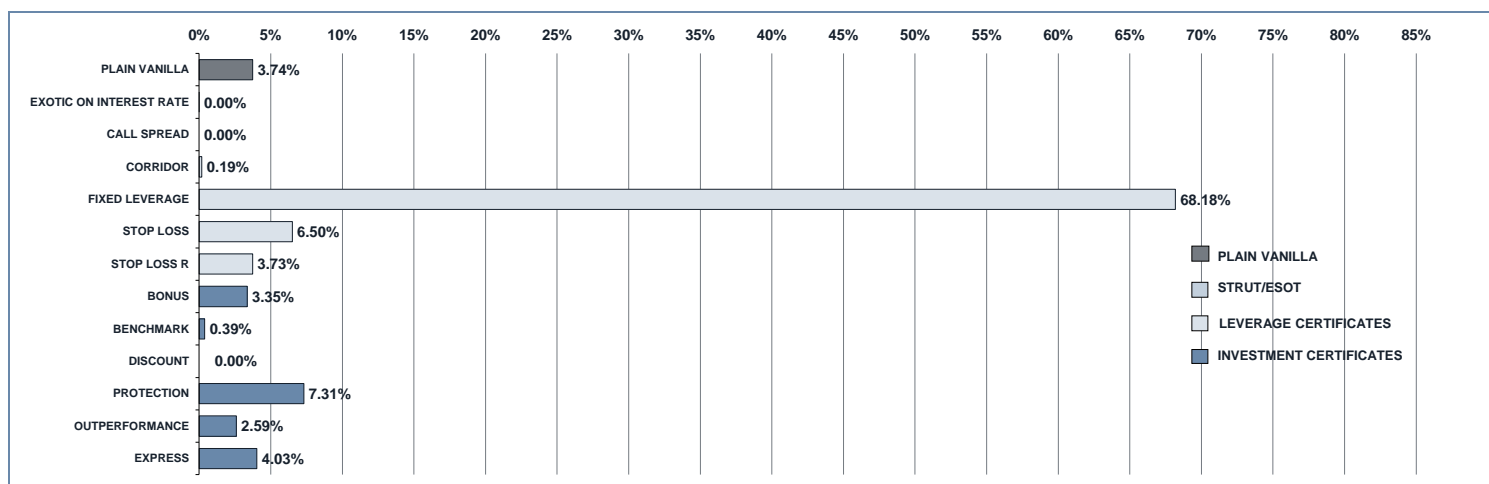
TRADING

	LISTED SeDeX					TRADING					
	DEC2019 LISTED END OF MONTH	JULY 2020 LISTED END OF MONTH	MONTH NEW LISTED	AUGUST 2020 LISTED END OF MONTH	MONTH NEW LISTED	JULY 2020 TRADES number	JULY 2020 TURNOVER eur m	AUGUST 2020 TRADES number	AUGUST 2020 TURNOVER eur m	JAN-AUG 2020 TRADES number	JAN-AUG 2020 TURNOVER eur m
MARKET SEGMENTS											
CW PLAIN VANILLA	4 320	5 762	441	6 209	552	26 260	51.4	21 961	37.9	254 752	683.9
STRUCTURED/EXOTIC CW	383	366	-	349	-	1 089	3.0	865	2.0	7 331	32.0
LEVERAGE CERTIFICATES CLASS A	1 767	2 301	439	2 471	391	31 850	136.0	24 734	103.6	253 672	1 609.1
LEVERAGE CERTIFICATES CLASS B	623	902	26	897	12	113 394	736.6	101 510	690.8	1 156 113	7 380.9
INVESTMENT CERTIFICATES CLASS A	44	34	-	34	-	501	7.2	412	3.9	4 507	49.8
INVESTMENT CERTIFICATES CLASS B	1 468	1 883	178	1 871	34	24 712	274.0	16 260	175.0	244 141	2 970.3
of which CERTIFICATES IN DISTRIBUTION	-	-	-	-	-	-	-	-	-	-	-
TOTAL	8 605	11 248	1 084	11 831	989	197 806	1 208.2	165 742	1 013.2	1 920 716	12 726.0
UNDERLYING ASSETS											
DOMESTIC SHARES	4 152	4 811	326	5 120	410	36 130	140.0	25 573	85.7	320 506	1 661.6
DOMESTIC INDICES	1 147	1 042	98	1 051	106	81 698	566.9	68 774	480.3	849 919	5 822.9
FOREIGN SHARES	1 455	2 300	260	2 386	129	14 139	64.9	11 281	59.4	122 328	843.7
FOREIGN INDICES	962	1 638	187	1 714	154	37 558	282.6	29 760	240.7	342 577	3 017.9
COMMODITIES	416	689	118	744	123	18 249	63.3	23 805	97.0	203 292	628.5
INTEREST RATE	44	35	14	35	38	92	0.7	66	0.5	2 901	33.1
EXCHANGE RATE	205	269	-	300	29	1 474	6.3	1 325	5.2	10 844	62.1
OTHERS	224	464	81	481	-	8 466	83.5	5 158	44.4	68 349	656.2
TOTAL	8 605	11 248	1 084	11 831	989	197 806	1 208.2	165 742	1 013.2	1 920 716	12 726.0
ISSUERS											
BANCA AKROS	88	62	-	59	-	2 076	28.6	1 522	20.0	18 892	273.1
BANCA MONTE PASCHI SIENA	20	12	-	12	-	-	-	-	-	10	0.0
BNP PARIBAS ISSUANCE	1 339	1 694	213	1 785	237	34 013	153.5	27 011	119.1	288 750	1 470.8
COMMERZBANK	90	1	-	1	-	5	0.1	5	0.0	2 201	19.6
CREDIT AGRICOLE CIB FINANCIAL PROD	3	3	-	3	-	8	0.1	1	0.0	248	2.9
CREDIT AGRICOLE CIB FINANCIAL SOLUT	8	8	-	8	-	14	0.2	8	0.1	188	2.6
CREDIT AGRICOLE CORP AND INV BANK	2	2	-	2	-	7	0.1	-	-	83	1.4
CREDIT SUISSE	42	39	2	40	1	170	4.1	137	2.7	3 679	65.1
DEUTSCHE BANK AG	46	21	-	21	-	24	0.7	68	1.7	1 010	16.3
EXANE FINANCE	16	14	-	14	-	47	0.2	33	0.2	910	6.7
GOLDMAN SACHS FIN CORP INT	-	4	-	4	-	71	0.5	32	0.2	651	7.4
GOLDMAN SACHS INTERNATIONAL	46	71	12	71	-	983	9.7	446	2.9	10 802	84.6
INGBANK	1	-	-	-	-	-	-	-	-	58	0.4
INTESA SANPAOLO	693	813	6	798	5	12 662	125.0	8 981	91.4	139 494	1 684.4
JP MORGAN STRUCTURED PRODUCTS B.V	3	2	-	2	-	2	0.0	3	0.1	45	0.8
LEONTEQ SECURITIES	11	101	23	94	1	1 696	23.8	949	10.4	7 893	93.7
MORGAN STANLEY BV	4	9	1	10	1	29	0.8	14	0.2	115	2.5
NATIXIS STRUCTURED ISSUANCE	49	55	1	54	1	715	6.3	432	2.8	10 168	106.4
NATWEST MARKETS PLC	2	-	-	-	-	-	-	-	-	1	0.0
SOCIETE GENERALE	8	8	-	8	-	9	0.0	10	0.0	223	0.3
SOCIETE GENERALE EFFEKTEN	-	54	-	53	-	78	0.6	66	0.5	144	1.1
SOCIETE GENERALE ISSUER	1 426	1 425	19	1 394	-	84 065	478.0	71 395	419.1	869 846	5 053.9
UBS AG	21	35	11	35	-	879	8.4	431	3.9	10 011	102.7
UNICREDIT	2	4	1	4	-	22	0.6	4	0.1	114	2.0
UNICREDIT BANK	3 133	4 015	334	4 356	412	26 432	175.1	20 585	109.1	251 341	1 936.9
VONTOBEL FINANCIAL PRODUCTS GMBH	1 552	2 796	461	3 003	331	33 799	191.9	33 609	228.8	303 839	1 790.1
TOTAL	8 605	11 248	1 084	11 831	989	197 806	1 208.2	165 742	1 013.2	1 920 716	12 726.0

TURNOVER
MONTHLY FIGURES - eur m



TURNOVER BY TYPOLOGIES
MONTHLY FIGURES - eur m



MOST TRADED UNDERLYING ASSETS
IN TERMS OF NUMBER OF TRADES

UNDERLYING ASSET	AUGUST 2020			
	TRADES			DAILY
	NUMBER	% TOT	% CUM	
FTSE MIB NET-OF-TAX (LUX) TR	25 917	15.64%	15.64%	1 234
FTSE MIB GROSS TR	16 774	10.12%	25.76%	799
FTSE MIB	12 349	7.45%	33.21%	588
NATURAL GAS FUTURES X7 LEVERAGED INDEX	4 030	2.43%	35.64%	192
DAX	3 959	2.39%	38.03%	189
NATURAL GAS FUTURES X7 SHORT LEVERAGED INDEX	3 371	2.03%	40.06%	161
UNICREDIT	3 275	1.98%	42.04%	156
NASDAQ 100	3 078	1.86%	43.90%	147
ENI	2 845	1.72%	45.61%	135
VT 7XL MIB	2 748	1.66%	47.27%	131

MOST TRADED UNDERLYING ASSETS
IN TERMS OF TURNOVER

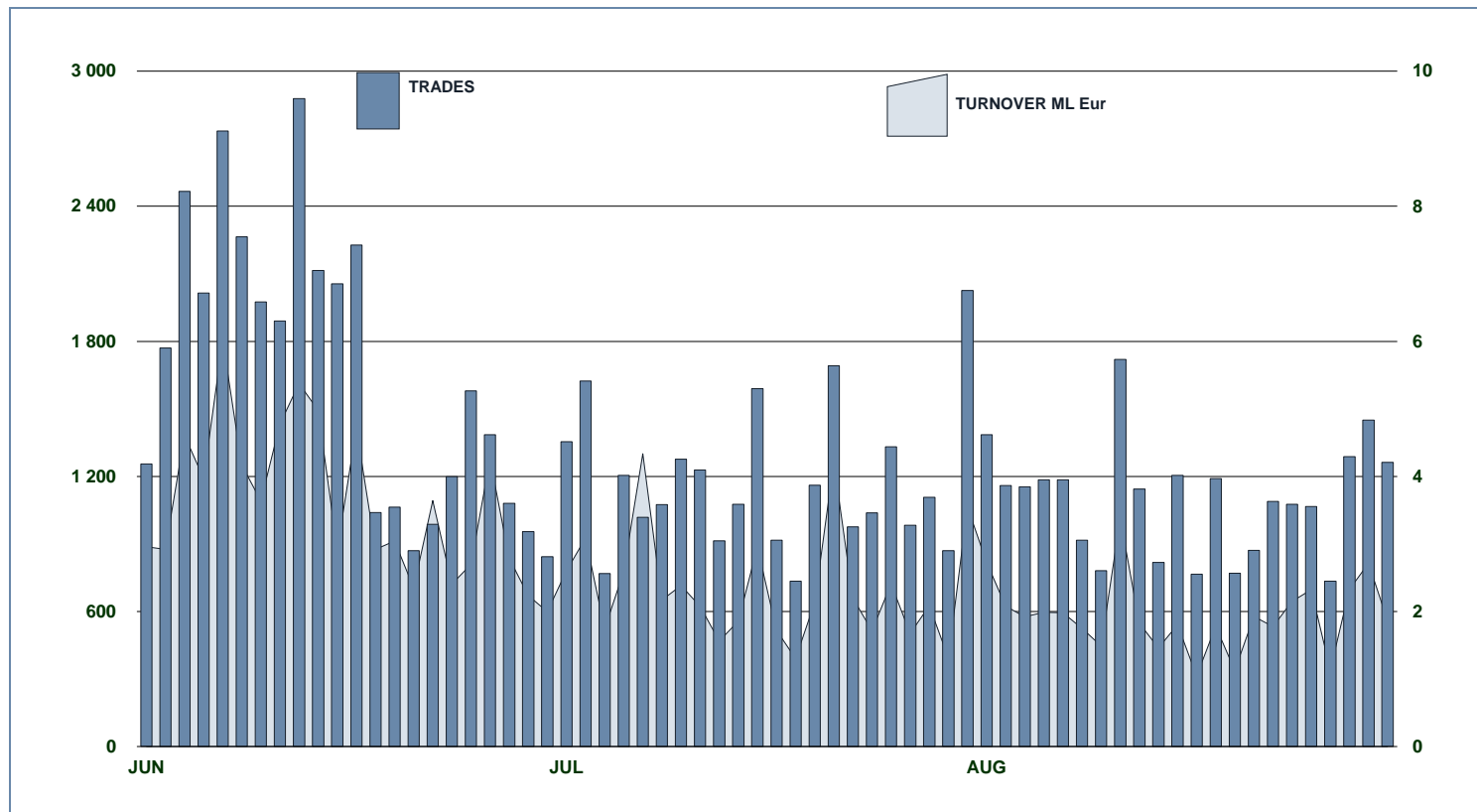
UNDERLYING ASSET	AUGUST 2020			
	TURNOVER			DAILY
	eur m	% TOT	% CUM	
FTSE MIB NET-OF-TAX (LUX) TR	174.19	17.19%	17.19%	8.29
FTSE MIB GROSS TR	126.69	12.50%	29.70%	6.03
ITALIA LEVA 7 SHORT	41.84	4.13%	33.83%	1.99
FTSE MIB	39.38	3.89%	37.71%	1.88
VT 7XL MIB	37.58	3.71%	41.42%	1.79
VT 7XL DAX	28.12	2.78%	44.20%	1.34
EURO STOXX 50	27.24	2.69%	46.89%	1.30
VT 7XS DAX	27.06	2.67%	49.56%	1.29
EURO STOXX SELECT DIVIDEND 30 INDEX	26.45	2.61%	52.17%	1.26
NATURAL GAS FUTURES X7 LEVERAGED INDEX	19.33	1.91%	54.08%	0.92

Glossary

Plain Vanilla: plain vanilla Covered Warrants
 IC - Benchmark: linear tracking of the underlying
 IC - Bonus: minimum return guaranteed in case of moderate decline
 IC - Equity Protection: (partial/total) protection from decline
 IC - Discount: purchase of the underlying at a discounted price

IC - Express: possibility of early redemption of the nominal value plus a premium
 IC - Outperformance: extraperformance for certain intervals of values of the underlying
 LC - Stop Loss: certificates with a knock-out barrier and leverage effect
 LC - Stop Loss R: Stop Loss with daily update of the strike
 CW SE - Exotics on Exchange Rates: CWs on interest rates and with periodic exercise

COVERED WARRANT



MAIN INDICATORS

	LISTED SeDeX					TRADING						
	DEC 2019		JULY 2020		AUGUST 2020		JULY 2020		AUGUST 2020		JAN-AUG 2020	
	LISTED END of MONTH	LISTED END of MONTH	MONTH NEW LISTED	LISTED END of MONTH	MONTH NEW LISTED	TRADES number	TURNOVER eur m	TRADES number	TURNOVER eur m	TRADES number	TURNOVER eur m	
UNDERLYING ASSETS												
DOMESTIC SHARES	2 572	3 094	158	3 368	289	14 711	26.8	11 599	17.9	139 332	252.5	
DOMESTIC INDICES	930	745	40	742	66	6 893	13.8	6 381	12.4	61 937	315.9	
FOREIGN SHARES	586	1 172	108	1 229	57	3 327	10.3	2 675	7.2	34 185	84.6	
FOREIGN INDICES	428	754	72	806	78	1 469	1.9	1 294	1.5	18 301	34.6	
COMMODITIES	60	194	55	222	40	447	0.9	511	0.5	5 309	17.6	
INTEREST RATE	29	18	-	18	-	-	-	-	-	11	0.0	
EXCHANGE RATE	95	148	8	170	22	501	0.7	364	0.4	2 999	10.5	
OTHERS	3	3	-	3	-	1	0.0	2	0.0	9	0.0	
TOTAL	4 703	6 128	441	6 558	552	27 349	54.4	22 826	39.8	262 083	715.8	
ISSUERS												
BANCA AKROS	9	6	-	6	-	-	-	-	-	1	0.0	
BANCA MONTE PASCHI SIENA	20	12	-	12	-	-	-	-	-	10	0.0	
BNP PARIBAS ISSUANCE	16	35	-	35	-	125	0.2	122	0.3	1 808	3.7	
COMMERZBANK	3	-	-	-	-	-	-	-	-	11	0.1	
INTESA SANPAOLO	337	448	-	438	-	2 312	3.7	1 576	1.7	20 548	26.3	
NATIXIS STRUCTURED ISSUANCE	1	1	-	1	-	-	-	-	-	-	-	
SOCIETE GENERALE	8	8	-	8	-	9	0.0	10	0.0	223	0.3	
SOCIETE GENERALE EFFETKEN	-	2	-	2	-	1	0.0	2	0.0	3	0.0	
SOCIETE GENERALE ISSUER	1 208	1 213	-	1 183	-	3 375	6.4	1 987	3.7	27 944	61.3	
UNICREDIT BANK	2 037	2 821	193.0	3 145	357	13 977	28.9	12 617	22.8	143 192	473.4	
VONTOBEL FINANCIAL PRODUCTS GMBH	1 064	1 582	248.0	1 728	195	7 550	15.2	6 512	11.3	68 343	150.8	
TOTAL	4 703	6 128	441.0	6 558	552	27 349	54.4	22 826	39.8	262 083	715.8	
CALL/PUT												
CALL	2 785	3 727	284	4 029	362	18 347	36.8	14 855	24.9	183 028	518.1	
PUT	1 535	2 035	157	2 180	190	7 913	14.7	7 106	12.9	71 724	165.7	
EXPIRATION DATE												
EXPIRY < 3 MONTHS	1 563	2 092	23	2 159	133	14 863	25.9	12 543	19.2	154 068	313.6	
3 MONTHS < EXPIRY < 6 MONTHS	1 454	2 229	83	2 355	177	8 720	19.5	7 059	13.0	54 793	117.0	
6 MONTHS < EXPIRY < 12 MONTHS	1 195	1 235	202	1 423	191	2 338	5.5	2 133	4.4	38 401	170.9	
12 MONTHS < EXPIRY < 24 MONTHS	195	435	124	484	51	1 269	3.1	1 007	3.0	13 291	107.2	
24 MONTHS < EXPIRY < 60 MONTHS	146	74	9	74	-	54	0.1	31	0.0	687	1.9	
EXPIRY MORE THAN 60 MONTHS	150	63	-	63	-	105	0.5	53	0.2	843	5.2	

COVERED WARRANT

FIRST TEN COVERED WARRANT IN TERMS OF TURNOVER TRADED IN AUGUST 2020 ON FTSE MIB INDEX

	ISIN	Issuer	Type	Strike	Underlying	Expiration Date	Turnover eur m	% TOT	% CUM	Trades
1	DE000V9CCN3	VONTOBEL FINANCIAL PRODUCTS GMBH	PUT	16 000.0	FTSE MIB	18/12/2020	0.90	7.25%	7.25%	51
2	DE000VE7LDZ1	VONTOBEL FINANCIAL PRODUCTS GMBH	CALL	22 500.0	FTSE MIB	18/12/2020	0.78	6.26%	13.51%	29
3	DE000HV457Y9	UNICREDIT BANK	PUT	20 000.0	FTSE MIB	20/11/2020	0.40	3.22%	16.73%	20
4	DE000HV4EXB9	UNICREDIT BANK	CALL	20 500.0	FTSE MIB	18/09/2020	0.39	3.19%	19.92%	161
5	DE000HV4CWT7	UNICREDIT BANK	PUT	19 000.0	FTSE MIB	21/08/2020	0.37	2.96%	22.88%	274
6	DE000HV4EXK0	UNICREDIT BANK	PUT	20 500.0	FTSE MIB	18/09/2020	0.34	2.76%	25.63%	30
7	DE000V8S4Q0	VONTOBEL FINANCIAL PRODUCTS GMBH	PUT	17 000.0	FTSE MIB	18/12/2020	0.29	2.36%	27.99%	31
8	DE000VE7LDQ0	VONTOBEL FINANCIAL PRODUCTS GMBH	CALL	22 500.0	FTSE MIB	19/03/2021	0.27	2.22%	30.21%	27
9	DE000HV4DYZ8	UNICREDIT BANK	PUT	20 000.0	FTSE MIB	18/09/2020	0.26	2.08%	32.30%	120
10	DE000HV41R99	UNICREDIT BANK	PUT	21 000.0	FTSE MIB	18/09/2020	0.26	2.07%	34.36%	78

FIRST TEN COVERED WARRANT IN TERMS OF TURNOVER TRADED IN AUGUST 2020 ON ITALIAN STOCKS

	ISIN	Issuer	Type	Strike	Underlying	Expiration Date	Turnover eur m	% TOT	% CUM	Trades
1	DE000HV49UQ7	UNICREDIT BANK	CALL	160.0	FERRARI	17/09/2020	0.71	3.99%	3.99%	114
2	DE000HV4DPP6	UNICREDIT BANK	PUT	160.0	FERRARI	17/09/2020	0.59	3.28%	7.27%	68
3	DE000HV4DPF8	UNICREDIT BANK	PUT	155.0	FERRARI	17/09/2020	0.48	2.69%	9.96%	113
4	DE000VE7L BX0	VONTOBEL FINANCIAL PRODUCTS GMBH	CALL	10.0	UNICREDIT	16/12/2021	0.47	2.61%	12.57%	43
5	DE000HV4DPA9	UNICREDIT BANK	CALL	165.0	FERRARI	17/09/2020	0.32	1.78%	14.35%	83
6	DE000HV4DMV0	UNICREDIT BANK	CALL	10.0	ENI	17/12/2020	0.30	1.69%	16.04%	118
7	DE000HV47WT1	UNICREDIT BANK	CALL	1.9	INTESA SANPAOLO	17/12/2020	0.29	1.61%	17.65%	51
8	DE000VE7LA92	VONTOBEL FINANCIAL PRODUCTS GMBH	CALL	11.0	GENERALI	17/09/2020	0.23	1.27%	18.92%	56
9	DE000HV4DPE1	UNICREDIT BANK	PUT	150.0	FERRARI	17/09/2020	0.22	1.24%	20.16%	219
10	LU2087874389	SOCIETE GENERALE ISSUER	CALL	6.2	MEDIOBANCA	17/09/2020	0.22	1.24%	21.40%	79

FIRST TEN COVERED WARRANT IN TERMS OF TURNOVER TRADED IN AUGUST 2020 ON OTHER UNDERLYINGS

	ISIN	Issuer	Type	Strike	Underlying	Expiration Date	Turnover eur m	% TOT	% CUM	Trades
1	DE000HV4EAR3	UNICREDIT BANK	CALL	220.0	TESLA	16/06/2021	0.34	3.57%	3.57%	3
2	DE000HV4G2B9	UNICREDIT BANK	PUT	260.0	TESLA	16/09/2020	0.27	2.84%	6.41%	154
3	DE000HV4G1J4	UNICREDIT BANK	PUT	112.5	APPLE	16/09/2020	0.22	2.29%	8.70%	41
4	DE000HV4DHG3	UNICREDIT BANK	CALL	2 600.0	AMAZON	16/09/2020	0.21	2.16%	10.86%	11
5	DE000VE456G1	VONTOBEL FINANCIAL PRODUCTS GMBH	PUT	60.0	APPLE	18/06/2021	0.18	1.93%	12.80%	56
6	DE000VP4WT22	VONTOBEL FINANCIAL PRODUCTS GMBH	CALL	100.0	APPLE	17/12/2021	0.18	1.92%	14.72%	8
7	LU2088598540	SOCIETE GENERALE ISSUER	CALL	2 800.0	AMAZON	18/12/2020	0.18	1.86%	16.58%	15
8	DE000VP1WPH0	VONTOBEL FINANCIAL PRODUCTS GMBH	PUT	50.0	APPLE	18/06/2021	0.15	1.60%	18.18%	63
9	DE000HV4F800	UNICREDIT BANK	CALL	340.0	TESLA	16/12/2020	0.15	1.56%	19.74%	20
10	DE000HV4FMZ8	UNICREDIT BANK	PUT	320.0	TESLA	16/12/2020	0.14	1.52%	21.25%	26

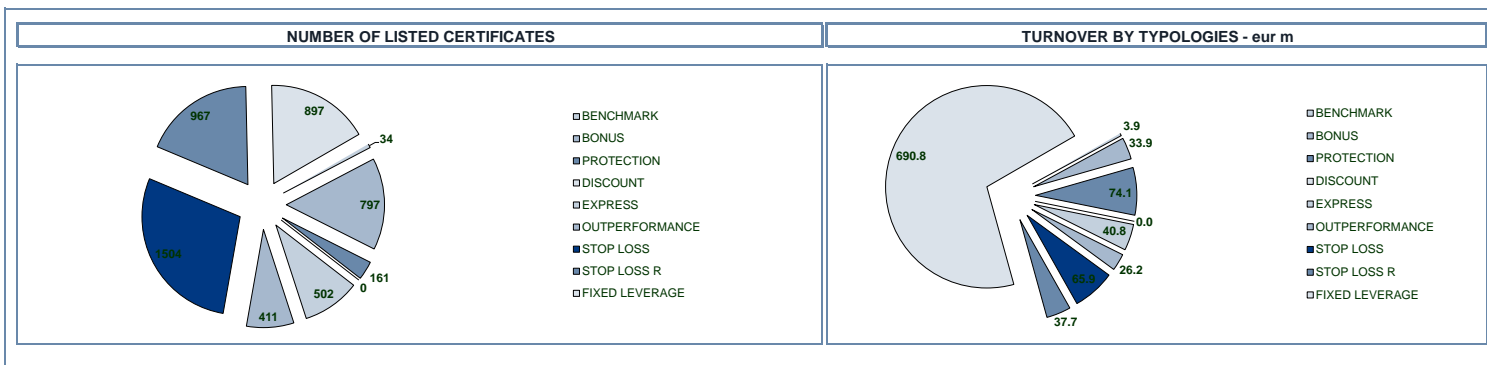
FIRST TEN EXOTIC COVERED WARRANT IN TERMS OF TURNOVER TRADED IN AUGUST 2020

	ISIN	Issuer	Type	Strike	Underlying	Expiration Date	Turnover eur m	% TOT	% CUM	Trades
1	LU2088567230	SOCIETE GENERALE ISSUER	ESOT	-	UNICREDIT	18/12/2020	0.17	8.93%	8.93%	70
2	DE000HV4DC96	UNICREDIT BANK	ESOT	-	ENI	18/09/2020	0.14	7.19%	16.12%	88
3	LU2087829672	SOCIETE GENERALE ISSUER	ESOT	-	DAX	18/12/2020	0.11	5.75%	21.87%	30
4	LU2087826223	SOCIETE GENERALE ISSUER	ESOT	-	LEONARDO	18/09/2020	0.10	5.02%	26.88%	32
5	LU2087828864	SOCIETE GENERALE ISSUER	ESOT	-	UNICREDIT	18/12/2020	0.09	4.63%	31.51%	10
6	LU2087828195	SOCIETE GENERALE ISSUER	ESOT	-	TELECOM ITALIA	18/12/2020	0.07	3.57%	35.08%	26
7	LU2088567073	SOCIETE GENERALE ISSUER	ESOT	-	UNICREDIT	18/12/2020	0.06	3.21%	38.29%	8
8	LU2087832973	SOCIETE GENERALE ISSUER	ESOT	-	EUR/USD	18/12/2020	0.05	2.73%	41.02%	17
9	LU2088561977	SOCIETE GENERALE ISSUER	ESOT	-	EXOR	18/12/2020	0.05	2.63%	43.65%	7
10	LU2087818717	SOCIETE GENERALE ISSUER	ESOT	-	LEONARDO	18/09/2020	0.04	1.95%	45.60%	12

DISTRIBUTION OF TRADING BY SIZE OF TRADES

SIZE OF TRADE (eur)		JULY 2020		AUGUST 2020		JAN-AUG 2020			
		Trades	eur m	Trades	eur m	Trades	% TOT	eur m	% TOT
0	250	6 864	0.9	6 329	0.8	74 570	28.45%	8.8	1.23%
250	500	4 917	1.8	4 463	1.6	43 074	16.44%	15.5	2.16%
500	1 000	4 979	3.5	4 012	2.8	42 227	16.11%	29.9	4.17%
1 000	2 000	4 313	6.1	3 137	4.4	36 790	14.04%	52.2	7.29%
2 000	3 000	2 061	5.0	1 672	4.1	18 794	7.17%	45.6	6.38%
3 000	4 000	1 232	4.2	940	3.2	12 196	4.65%	41.8	5.83%
4 000	5 000	781	3.5	570	2.5	8 605	3.28%	37.9	5.29%
5 000	10 000	1 462	10.1	1 091	7.5	14 588	5.57%	99.6	13.91%
10 000	15 000	322	3.9	295	3.6	3 610	1.38%	43.3	6.05%
15 000	20 000	121	2.1	112	1.9	1 555	0.59%	26.8	3.74%
20 000	25 000	69	1.5	71	1.6	902	0.34%	19.9	2.78%
25 000	50 000	150	5.0	102	3.4	2 081	0.79%	72.5	10.12%
50 000	75 000	46	2.9	24	1.5	2 359	0.90%	149.8	20.92%
75 000	150 000	28	3.2	8	0.9	698	0.27%	66.0	9.23%
		4	0.7			34	0.01%	6.4	0.90%

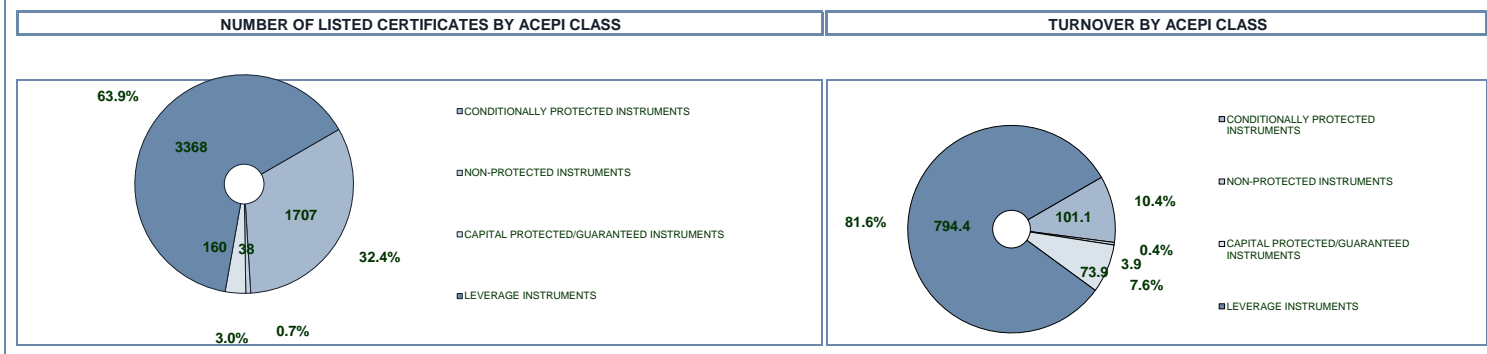
CERTIFICATES



MAIN INDICATORS

	LISTED SeDeX						TRADING					
	DEC 2019		JULY 2020		AUGUST 2020		JULY 2020		AUGUST 2020		JAN-AUG 2020	
	LISTED END of MONTH	LISTED END of MONTH	MONTH NEW LISTED	LISTED END of MONTH	MONTH NEW LISTED	TRADES number	TURNOVER eur m	TRADES number	TURNOVER eur m	TRADES number	TURNOVER eur m	
CERTIFICATES - TYPOLOGY												
BENCHMARK (*)	44	34	-	34	-	501	7.2	412	3.9	4 507	49.8	
BONUS	577	811	61	797	1	4 009	50.8	2 902	33.9	49 349	697.1	
PROTECTION	134	160	12	161	4	7 017	102.2	5 233	74.1	70 944	1 078.0	
DISCOUNT	-	-	-	-	-	-	-	-	-	-	-	
EXPRESS	295	491	62	502	27	7 529	73.0	4 816	40.8	72 574	670.3	
OUTPERFORMANCE	462	421	43	411	2	6 157	48.0	3 309	26.2	51 274	524.9	
STOP LOSS	848	1 401	418	1 504	271	21 791	81.6	17 672	65.9	182 809	1 243.6	
STOP LOSS R	919	900	21	967	120	10 059	54.4	7 062	37.7	71 063	365.4	
FIXED LEVERAGE	623	902	26	897	12	113 394	736.6	101 510	690.8	1 156 113	7 380.9	
CERTIFICATES IN DISTRIBUTION	-	-	-	-	-	-	-	-	-	-	-	
TOTAL	3 902	5 120	643	5 273	437	170 457	1 153.8	142 916	973.3	1 658 633	12 010.2	

(*) Open end and Quanto are included



DISTRIBUTION OF TRADING BY SIZE OF TRADES

SIZE OF TRADE (eur)	JULY 2020		AUGUST 2020		JAN-AUG 2020	
	Trades	eur m	Trades	eur m	Trades	% TOT
- 250	14 807	1.8	12 818	1.5	161 196	9.72%
250 500	12 983	4.8	11 292	4.2	134 018	8.08%
500 1 000	21 167	15.7	17 294	12.6	199 418	12.02%
1 000 2 000	28 629	41.4	22 146	31.6	254 678	15.35%
2 000 3 000	16 421	40.7	15 003	37.1	152 645	9.20%
3 000 4 000	11 246	38.7	8 492	29.4	97 478	5.88%
4 000 5 000	8 470	38.4	7 050	31.9	82 093	4.95%
5 000 10 000	23 721	173.2	21 418	155.7	222 270	13.40%
10 000 15 000	12 414	148.2	10 467	124.8	130 953	7.90%
15 000 20 000	7 420	127.0	5 797	99.8	80 975	4.88%
20 000 25 000	3 864	85.2	3 603	79.2	44 307	2.67%
25 000 50 000	6 729	231.4	5 339	181.7	68 422	4.13%
50 000 75 000	1 681	98.1	1 187	69.4	17 383	1.05%
75 000 150 000	773	77.1	892	89.5	11 668	0.70%
	132	32.3	118	25.1	1 129	0.07%
					18.9	0.16%
					49.6	0.41%
					146.7	1.22%
					367.0	3.06%
					374.9	3.12%
					336.8	2.80%
					370.6	3.09%
					1 602.6	13.34%
					1 577.7	13.14%
					1 386.5	11.54%
					973.4	8.11%
					2 337.7	19.46%
					1 035.3	8.62%
					1 157.8	9.64%
					274.7	2.29%

