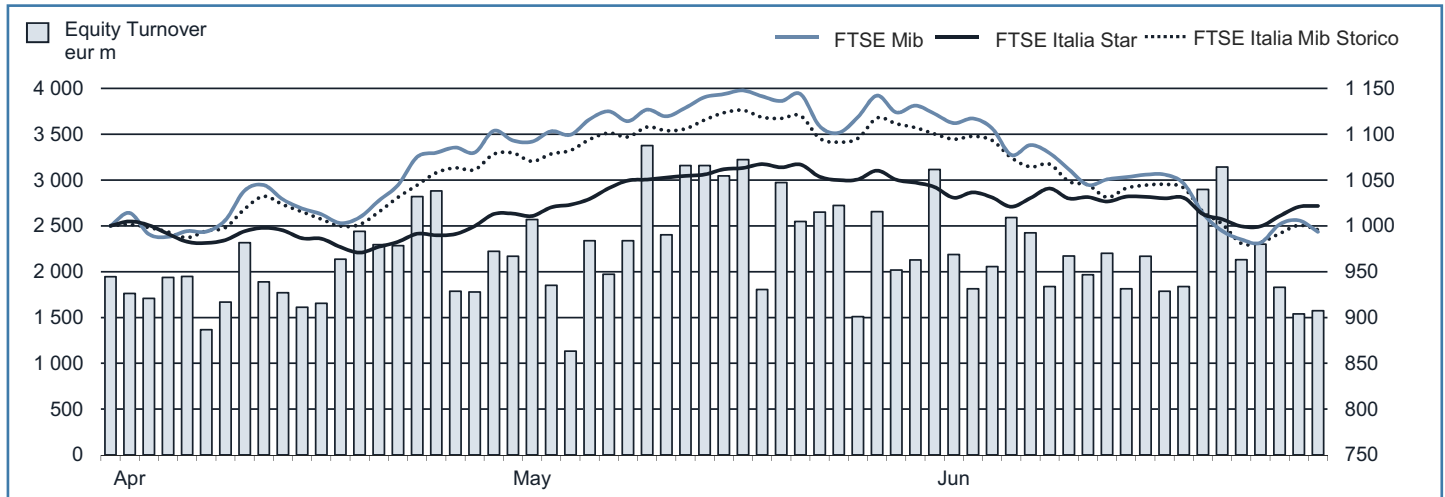




## MONTHLY UPDATE

June 2013

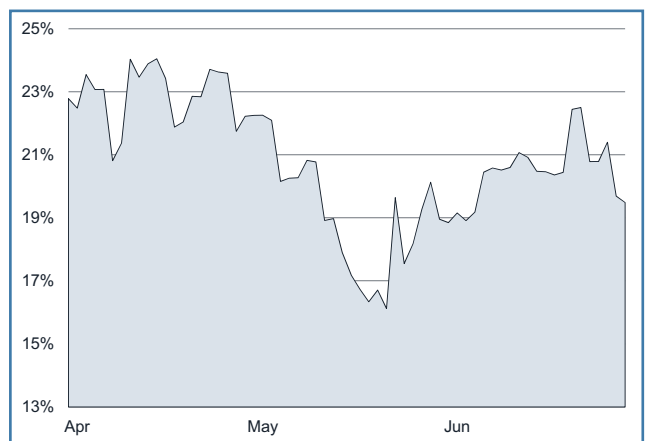
### EQUITY DAILY TURNOVER AND MAIN INDICES (BASE = 1000 28.03.2013)



### STOCK INDICES

	31 MAY 2013	28 JUN 2013	Var. % MoM	Var. % 2012 end	Volatility JUN 2013
FTSE Italia Mib Storico	14 487	13 112	-9.5%	-3.0%	16.4%
FTSE Mib	17 214	15 239	-11.5%	-6.4%	20.1%
FTSE Italia Star	12 722	12 471	-2.0%	14.0%	12.8%

### FTSE MIB VOLATILITY



### TRADING - DAILY AVERAGE

	(*)	JAN-JUN 2012		JAN-JUN 2013		JUN 2013	
		Trades Number	Turnover eur m	Trades Number	Turnover eur m	Trades Number	Turnover eur m
Shares	▲	257 675	2 194.4	239 922	2 273.1	226 342	2 113.9
Securitized Derivatives	▲	5 008	40.0	6 703	62.2	6 801	57.9
ETF Plus	▲	11 848	251.8	12 615	295.8	12 254	302.0
Fixed Income	▲	25 413	1 264.0	27 343	1 536.5	23 493	1 176.9

(\*) Indicators are related to turnover figures.

### LISTING

	28 DEC 2012	31 MAY 2013	28 JUN 2013
MTA Domestic	249	245	246
of which STAR	66	66	66
MTA Foreign	5	5	5
of which STAR	1	1	1
MIV (Investment Companies and SPAC)	6	6	5
MTA International	36	36	36
AIM Italia - MAC	18	26	27
MAC	9	-	-
<b>Listed Companies Total</b>	<b>323</b>	<b>318</b>	<b>319</b>
Warrant - Mta-MIV	19	15	15
Warrant - AIM Italia	7	10	10
MIV Closed End Funds	25	25	25
ETF	616	661	660
ETCIETN	184	173	173
<b>ETF Plus Total</b>	<b>800</b>	<b>834</b>	<b>833</b>
Securitized Derivatives	4 759	6 508	6 103
Convertibles Bonds	10	9	9
Mot - Government Bonds	102	108	108
Mot - Bonds	712	706	702
Mot - Eurobonds and ABSs	363	375	372
<b>MOT Total</b>	<b>1 177</b>	<b>1 189</b>	<b>1 182</b>
Extratot	304	315	319
<b>Fixed Income Total</b>	<b>1 481</b>	<b>1 504</b>	<b>1 501</b>

### MOST TRADED SHARES IN THE MONTH

Shares	Mkt	Turnover eur m	% TOT
Unicredit	MTA	7 365.7	17.4%
Eni	MTA	5 824.7	13.8%
Intesa Sanpaolo	MTA	4 154.9	9.8%
Enel	MTA	3 281.8	7.8%
Fiat	MTA	2 490.8	5.9%

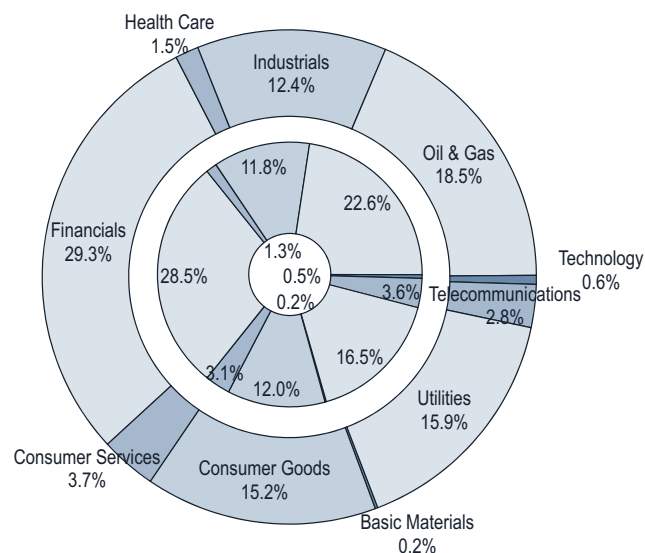
### BEST PERFORMANCES IN THE MONTH

Shares	Mkt	Var. % MoM	Var % 2012 end
Fintel Energia Group	AIMMA	66.4%	44.2%
Rcs Mediagroup Rsp	MTA	23.1%	86.4%
Mediaset	MTA	19.8%	85.7%
Neurosoft	AIMMA	17.9%	88.3%
Sogefi	MTA	16.5%	35.2%

Performances are computed with no-rounded official prices.  
Performance is not included for shares not listed at 2012 end or unlimited suspended at June 2013 end

## CAPITALISATION

Domestic Companies Capitalisation (eur m)	28 DEC 2012	31 MAY 2013	28 JUN 2013
MTA Capitalisation	364 421	390 033	352 815
of which STAR	13 277	15 870	15 523
MIV (Investment Companies e SPAC)	425	412	131
AIM Italia - MAC	475	690	772
MAC	<b>145</b>	-	-
<b>Total</b>	<b>365 466</b>	<b>391 134</b>	<b>353 718</b>
Capitalisation (% GDP)			
MTA	22.9%	24.2%	21.9%
of which STAR	0.8%	1.0%	1.0%
<b>Total</b>	<b>22.9%</b>	<b>24.3%</b>	<b>22.0%</b>
Capitalisation (% Tot.)			
FTSE MIB Shares	84.5%	83.4%	83.1%



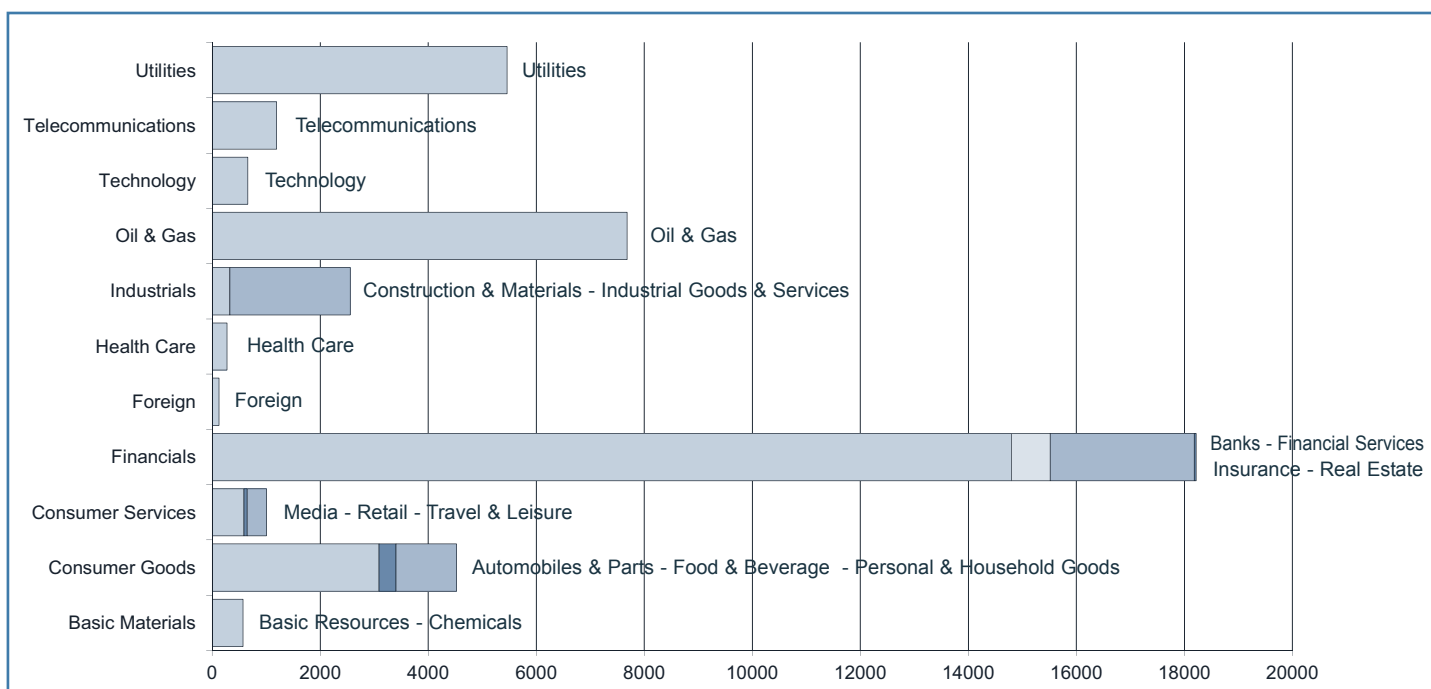
Note: internal chart: capitalisation on 28.12.2012;  
external chart: capitalisation on 28.06.2013.

## TRADING

SHARES	JAN-JUN 2012		JAN-JUN 2013		JUN 2013	
	Trades Number	Turnover eur m	Trades Number	Turnover eur m	Trades Number	Turnover eur m
MTA Domestic	31 282 034	268 623.9	28 876 562	275 751.6	4 361 921	40 951.3
of which STAR	1 302 053	3 318.1	1 241 116	3 688.5	180 487	520.3
MTA Foreign	1 180 493	8 884.0	909 976	7 358.4	142 327	1 205.4
of which STAR	4 306	22.2	6 543	38.3	833	4.8
MIV Invest. Companies	15 261	14.0	33 216	38.0	2 922	2.4
MTA International	230 602	1 152.3	153 808	943.1	17 120	109.3
AIM Italia - MAC	16 362	19.0	16 644	43.2	2 548	8.8
MAC	21	0.3	-	-	-	-
<b>Total</b>	<b>32 724 773</b>	<b>278 693.5</b>	<b>29 990 206</b>	<b>284 134.1</b>	<b>4 526 838</b>	<b>42 277.3</b>
FTSE MIB Shares						
% Shares Total	76.7%	92.1%	78.7%	92.2%	81.8%	93.6%

OTHER INSTRUMENTS	JAN-JUN 2012		JAN-JUN 2013		JUN 2013	
	Trades Number	Turnover eur m	Trades Number	Turnover eur m	Trades Number	Turnover eur m
SeDex	636 033	5 074.7	837 898	7 778.8	136 026	1 158.2
Warrant MTA-MIV	48 088	31.4	34 662	21.7	2 641	2.1
Warrant AIM Italia	2 219	3.1	2 535	3.4	348	0.4
MIV Closed End Funds	28 028	70.6	30 827	79.0	3 710	9.6
ETF	1 178 392	28 191.5	1 317 833	33 663.1	210 497	5 592.9
ETC	326 323	3 781.3	259 060	3 311.9	34 584	447.1
<b>ETF Plus</b>	<b>1 504 715</b>	<b>31 972.8</b>	<b>1 576 893</b>	<b>36 975.0</b>	<b>245 081</b>	<b>6 040.0</b>
Convertible Bonds	61 076	760.9	23 211	372.4	2 313	38.1
Subscription rights	604 297	2 585.3	72 699	24.4	61 547	22.7
Mot - Government Bonds	2 552 119	147 686.5	2 642 392	176 660.1	369 958	21 689.0
Mot - Bonds	460 274	6 842.3	544 649	9 446.7	66 612	1 043.0
Mot - Eurobonds and ABSs	172 409	3 748.8	180 636	3 497.3	25 913	430.6
ExtraMOT	42 616	2 248.0	50 189	2 453.6	7 376	375.7
<b>Fixed Income Total</b>	<b>3 227 418</b>	<b>160 525.7</b>	<b>3 417 866</b>	<b>192 057.8</b>	<b>469 859</b>	<b>23 538.4</b>

## INDUSTRY/SUPERSECTOR TURNOVER (eur m)



## NEW LISTINGS

### RECENT EVENTS

ISSUER	MKT	SHARES	TRADING FIRST DAY	EVENT	1st DAY CAPITALISATION (eur m)	SPONSOR (NOMAD for AIM Italia)
<b>- MTA</b>						
Brunello Cucinelli	MTA	O	27.04.2012	IPO (placement of 33.0% of share capital)	726.70	Mediobanca
Fondiarria-Sai	MTA	RSP	06.08.2012	Following right issue	35.99	-
Intek Group	MTA	RSP	03.12.2012	Establishment of a different quotation line RSP 1.1.2012		
1 Moleskine	MTA	O	03.04.2013	IPO (placement of 55.2% of share capital)	483.36	Mediobanca
IVS Group	MTA	O	03.06.2013	Transition from MIV		
<b>- AIM ITALIA - MAC</b>						
1 MC-Link	AIMMA	O	22.02.2013	Admission with institutional placing	27.51	Integrae SIM
2 Enertronica	AIMMA	O	15.03.2013	Admission with institutional placing	10.01	Envent
3 Mondo TV France	AIMMA	O	25.03.2013	Admission with institutional placing	12.48	Banca Finnat
4 Sacom	AIMMA	O	24.04.2013	Admission with institutional placing	34.09	Banca Finnat
5 Italia Independent	AIMMA	O	28.06.2013	Admission with institutional placing	66.74	Equita SIM

### NEWLY ADMITTED COMPANIES (THROUGH IPOs, SPOs AND INSTITUTIONAL PLACINGS)

<b>3 Security: MONDO TV FRANCE</b>				<b>Total</b>	<b>of which Public</b>	<b>of which Institutionals</b>
Offer period:	....	Offered shares:	max	26 424 828	min	....
	25.03.2013	Greenshoe:	max	-	....	....
Offer price:	0.11	Requested shares:		....		....
Bookbuilding range:	....-....	Allotted shares:		26 424 828	26 424 828	-
Minimum lot:	....	- of which greenshoe:		-	-	-
Placed stake:	25.0%	Capital raised (ML euro):		3.00	3.00	-
		- from newly issued shares:		-		-
Blt alphabetical code:	....					
Bloomberg code:	....	Market and segment:		AIM Italia - Mercato Alternativo del Capitale		
Reuters code:	....	Sector:		...., ....		
<b>4 Security: MOLESKINE</b>				<b>Total</b>	<b>of which Public</b>	<b>of which Institutionals</b>
Offer period:	18.03.2013	Offered shares:	max	106 360 000	min	10 460 500
	27.03.2013	Greenshoe:	max	10 636 000		-
Offer price:	2.30	Requested shares:		218 011 590		13 171 500
Bookbuilding range:	....-....	Allotted shares:		116 996 000		10 636 500
Minimum lot:	1 500	- of which greenshoe:		10 636 000		-
Placed stake:	55.2%	Capital raised (ML euro):		269.09		24.46
		- from newly issued shares:		27.60		244.63
Blt alphabetical code:	....					
Bloomberg code:	....	Market and segment:		MTA		
Reuters code:	....	Sector:		...., ....		
<b>5 Security: SACOM</b>				<b>Total</b>	<b>of which Public</b>	<b>of which Institutionals</b>
Offer period:	....	Offered shares:	max	1 546 852	min	1 546 852
	24.04.2013	Greenshoe:	max	....		-
Offer price:	9.70	Requested shares:		....		....
Bookbuilding range:	....-....	Allotted shares:		871 776		871 776
Minimum lot:	....	- of which greenshoe:		-		-
Placed stake:	24.3%	Capital raised (ML euro):		8.46		8.46
		- from newly issued shares:		8.46		-
Blt alphabetical code:	....					
Bloomberg code:	....	Market and segment:		AIM Italia - Mercato Alternativo del Capitale		
Reuters code:	....	Sector:		...., ....		
<b>6 Security: ITALIA INDEPENDENT</b>				<b>Total</b>	<b>of which Public</b>	<b>of which Institutionals</b>
Offer period:	....	Offered shares:	max	525 000	min	....
	28.06.2013	Greenshoe:	max	78 750		-
Offer price:	26.00	Requested shares:		525 000		....
Bookbuilding range:	....-....	Allotted shares:		525 000		....
Minimum lot:	....	- of which greenshoe:		-		-
Placed stake:	23.8%	Capital raised (ML euro):		13.65		....
		- from newly issued shares:		11.05		13.65
Blt alphabetical code:	....					
Bloomberg code:	....	Market and segment:		AIM Italia - Mercato Alternativo del Capitale		
Reuters code:	....	Sector:		...., ....		

Note: The column "Total" includes, in addition to public and institutional tranches, also prospective offers reserved to other investors (family & friends etc.). Allotted shares figure doesn't include overallotted shares until the greenshoe option is possibly exercised.

## RIGHT ISSUES

N°	MKT SEG.	SECURITIES	OPTION RIGHTS TRADING PERIOD		OFFER PRICE	OFFERED SHARES	ISSUE RATE	UNEXERCISED PREEMPTIVE RIGHTS (%)	ALLOTTED SHARES	CAPITAL RAISED (eur m)
			FROM	TO						
1	AIM-MAC	VALORE ITALIA	17.12.2012	16.01.2013	0.10	16 191 111	1:4 ord	84.7%	4 008 755	0.4
2	MTA -	LVENTURE GROUP	21.01.2013	15.02.2013	0.05	95 850 000	9 : 1 ord, 9 : 1 rights	14.7%	95 850 000	5.0
3	MTA -	MOLMED	28.01.2013	15.02.2013	0.41	12 264 576	6 : 103 ord, 6 : 103 rights	17.5%	12 264 576	5.0
4	MIV -	CAPE LIVE ORD	04.02.2013	27.02.2013	0.09	279 194 227	19 : 5 ord e/o obbl	99.4%	1 555 694	0.1
5	MTA -	BE ORD	11.02.2013	01.03.2013	0.19	65 719 176	19 : 20 ord, 19 : 20 rights	28.5%	50 061 808	9.5
6	AIM-MAC	FRENDY ENERGY ORD	20.05.2013	20.06.2013	1.05	4 225 000	1:5 ord	0.5%	4 225 000	4.4
7	AIM-MAC	VALORE ITALIA ORD	20.05.2013	18.06.2013	0.10	17 000 000	1:4 ord	96.4%	724 017	0.1
8	AIM-MAC	PRIMI SUI MOTORI ORD	27.05.2013	27.06.2013	21.00	144 894	1:8 ord	47.0%	76 818 AAI	1.6
9	MTA	NOEMALIFE ORD	03.06.2013	21.06.2013	3.49	1 429 965	3:13 ord	34.3%	939 060 AAI	3.3

The right issues by Banca Popolare Etruria e Lazio, RCS Mediagroup ord and RCS Mediagroup rsp are currently underway

## SCRIP RIGHT ISSUES

N°	MKT SEG.	SECURITIES	EFFECTIVE DATE	NOMINAL VALUE		ISSUED SHARES	ISSUE RATE	VALUE (eur m)
				BEFORE	AFTER			
	MTA -	FNM	18.06.2012	0.0000	0.0000	186 386 814	3:4	100.0
	MTA -	ANSALDO STS	04.07.2012	0.5000	0.5000	20 000 000	1:6	10.0
	MTA -	CATTOLICA ASSICURAZIONI	23.07.2012	3.0000	3.0000	2 704 431	1:20	8.1
1	AIM-MAC	FRENDY ENERGY	13.05.2013	-	-	4 225 000	1:4	1.06

## TOTAL MONEY RAISED (EUR M)

	NUMBER	SECURITIES		MONEY RAISED	SHARE-HOLDERS	INVESTORS			
		NEWLY ISSUED	SOLD			PUBLIC	EMPLOYEES	INSTIT. INVESTORS	OTHER
<b>a) YEAR 2013 - CAPITAL INCREASES</b>	<b>9</b>	<b>29.4</b>	<b>-</b>	<b>29.4</b>	<b>29.4</b>	<b>-</b>	<b>-</b>	<b>-</b>	<b>-</b>
MTA	4	22.8	-	22.8	22.8	-	-	-	-
- of which Star	-	-	-	-	-	-	-	-	-
MIV	1	0.1	-	0.1	0.1	-	-	-	-
AIM Italia - Mercato Alternativo del Capitale	4	6.5	-	6.5	6.5	-	-	-	-
<b>b) YEAR 2013 - OPVS TOTAL (Excluded Closed-end funds)</b>	<b>6</b>	<b>50.6</b>	<b>247.1</b>	<b>297.7</b>	<b>1.8</b>	<b>34.0</b>	<b>0.2</b>	<b>261.8</b>	<b>-</b>
MTA	1	27.60	241.49	269.09	-	24.30	0.17	244.63	-
- of which Star	-	-	-	-	-	-	-	-	-
MIV	-	-	-	-	-	-	-	-	-
AIM Italia - Mercato Alternativo del Capitale	5	23.00	5.60	28.60	1.78	9.68	-	17.14	-
NEW LISTINGS	6	50.60	247.09	297.69	1.78	33.98	0.17	261.77	-
MTA	1	27.60	241.49	269.09	-	24.30	0.17	244.63	-
- of which Star	-	-	-	-	-	-	-	-	-
MIV	-	-	-	-	-	-	-	-	-
AIM Italia - Mercato Alternativo del Capitale	5	23.00	5.60	28.60	1.78	9.68	-	17.14	-
<b>YEAR 2013 - MONEY RAISED (a+b)</b>	<b>15</b>	<b>80.0</b>	<b>247.1</b>	<b>327.1</b>	<b>31.2</b>	<b>34.0</b>	<b>0.2</b>	<b>261.8</b>	<b>-</b>

## TAKEOVER BIDS

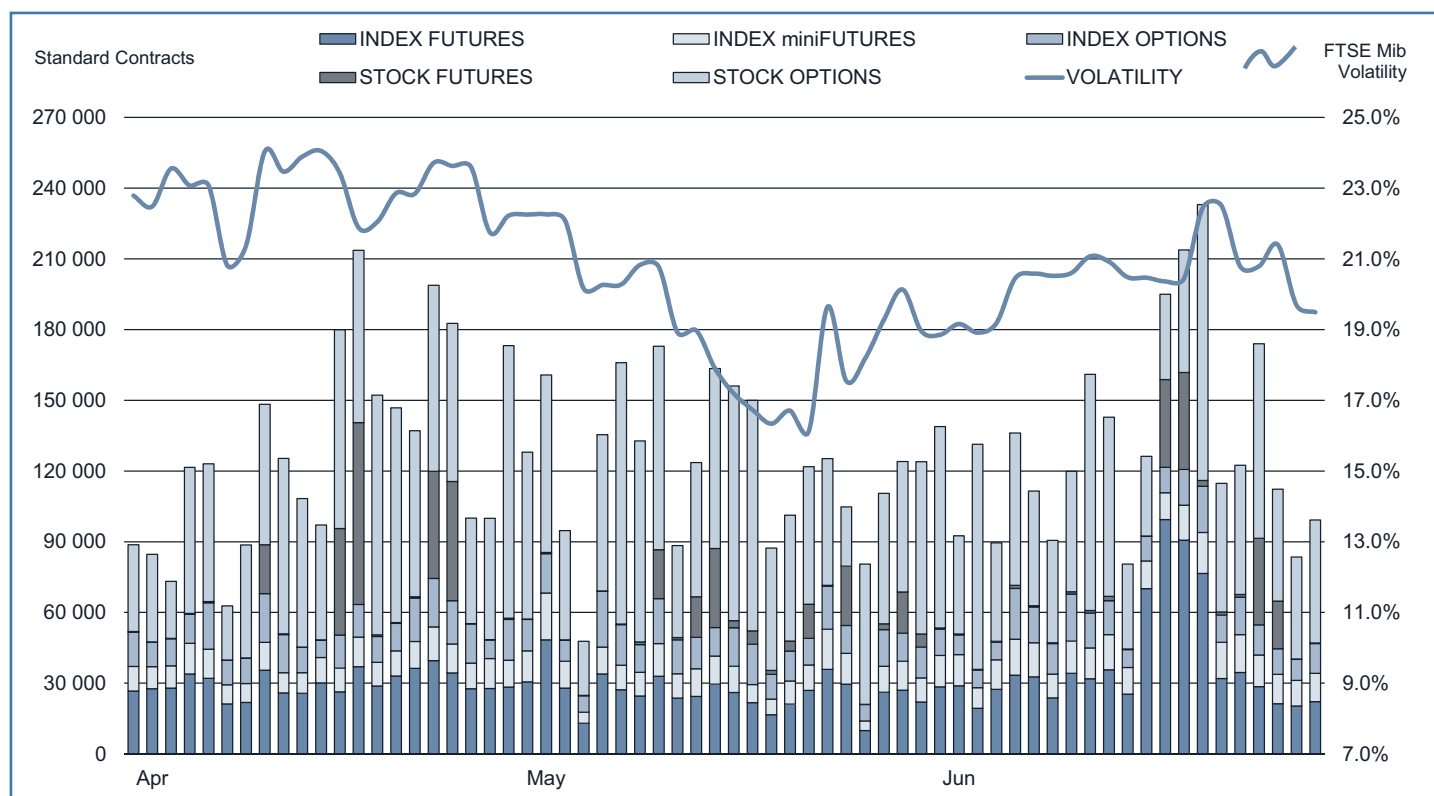
N°	BIDDER	OFFER TYPE	TARGET SHARES	OFFER PERIOD		PRICE (eur)	SHARES		STAKE OWNED AFTER OFFER	TURNOVER (eur m)
				FROM	TO		REQUESTED	BOUGHT		
	INIZIATIVE MINERARIE E PAVIM	VOLUNTARY	GRUPPO MINERALI MAFFEI	21.11.2011	16.12.2011	4.000	1 270 592	629 695	90.08%	2.52
	BANCA APULIA, HDI ASSICURAZIONI	VOLUNTARY	APULIA PRONTOPRESTITO	30.01.2012	16.03.2012	0.300	44 700 000	21 249 667	90.06%	6.37
	EDIZIONE S.r.l	VOLUNTARY	BENETTON GROUP S.P.A	05.03.2012	30.03.2012	4.600	45 937 430	32 005 805	92.37%	147.23
	DOCOMO Deutschland GmbH	VOLUNTARY	BUONGIORNO S.p.a.	04.06.2012	06.07.2012	2.000	111 888 895	104 779 755	98.05%	209.56
	TRANSALPINA DI ENERGIA S.R.L.	MANDATORY	EDISON S.p.a.	02.07.2012	03.08.2012	0.890	1 003 045 298	904 822 259	98.10%	805.29
	LADURNER FINANCE S.p.A.	MANDATORY	GREENVISION AMBIENTE S.p.A.	06.08.2012	10.09.2012	6.610	2 047 223	1 433 477	89.52%	9.48
	MONTE BIANCO	VOLUNTARY	SCREEN SERVICE	12.11.2012	30.11.2012	0.220	136 785 000	29 128 027	22.27%	6.41
1	TREEMMEA	VOLUNTARY	RCF GROUP	13.12.2012	08.02.2013	0.650	8 112 199	4 454 041	88.57%	2.90
2	CRISTALLO	MANDATORY	MARCOLIN	07.01.2013	01.02.2013	4.250	13 297 244	10 367 974	95.29%	44.06
3	SALINI	VOLUNTARY	IMPREGILO	18.03.2013	12.04.2013	4.000	282 381 888	228 213 875	86.54%	912.86
4	MERIDIANA	VOLUNTARY	MERIDIANA FLY	15.04.2013	10.05.2013	0.600	10 732 454	6 801 052	96.30%	4.08
5	ROSNEFT JV PROJECTS S.A.	VOLUNTARY	SARAS	27.05.2013	14.06.2013	1.370	69 310 933	69 310 933	20.99%	94.96

Notes: AAI Before unexercised preemptive right auction  
 AEG Before greenshoe  
 AIMIT AIM Italia

AIMMA COMP MTAI AIM - Mercato Alternativo del Capitale  
 Compendium  
 MTA International

ST Star Segment

## IDEM - DERIVATIVES TRADING



	DAYS	MONTH	TURNOVER (1)					DAILY AVERAGE			OPEN INTEREST (4) NUMBER OF CONTRACTS
			TOTAL		OTHER (2)	% TOT SHARES (3)	STANDARD CONTRACTS	TRADES	TURNOVER eur m		
			STANDARD CONTRACTS	TRADES NUMBER						TURNOVER eur m	
INDEX FUTURES (5)	125	YEAR 2013	3 661 967	2 554 849	298 286.9	..	105.0%	29 296	20 439	2 386.3	34 022
	22	MAY 2013	577 193	457 412	49 229.9	..	90.0%	26 236	20 791	2 237.7	59 947
	20	JUN 2013	787 956	447 765	63 372.6	..	149.9%	39 398	22 388	3 168.6	34 022
INDEX MINIFUTURES (6)	125	YEAR 2013	1 362 989	1 095 048	22 311.2	..	7.9%	10 904	8 760	178.5	2 904
	22	MAY 2013	242 472	193 941	4 137.2	..	7.6%	11 021	8 816	188.1	6 355
	20	JUN 2013	263 051	202 999	4 224.8	..	10.0%	13 153	10 150	211.2	2 904
INDEX OPTIONS	125	YEAR 2013	1 683 518	300 746	69 249.3	1 356.9	24.4%	13 468	2 406	554.0	255 160
	22	MAY 2013	300 881	51 815	12 839.6	301.1	23.5%	13 676	2 355	583.6	321 075
	20	JUN 2013	258 223	50 450	10 330.3	190.4	24.4%	12 911	2 523	516.5	255 160
STOCK FUTURES (7)	125	YEAR 2013	590 743	6 752	1 046.8	..	0.4%	4 726	54	8.4	15 746
	22	MAY 2013	155 444	1 381	522.9	..	1.0%	7 402	66	24.9	27 075
	20	JUN 2013	148 252	1 275	229.0	..	0.6%	7 413	64	11.4	15 746
SINGLE STOCK DIVIDEND FUTURES	30	YEAR 2013	11 166	83	3.5	..	..	372	3	0.1	10 856
	10	MAY 2013	1 741	29.0	0.7	..	..	..	..	..	1 581
	20	JUN 2013	9 425	54	2.8	..	..	471	3	0.1	10 856
STOCK OPTIONS	125	YEAR 2013	9 045 622	220 813	22 664.1	1 255.6	8.6%	72 365	1 767	181.3	3 614 727
	22	MAY 2013	1 433 952	39 284	3 775.1	201.7	7.3%	65 180	1 786	171.6	4 397 701
	20	JUN 2013	1 172 488	31 859	3 077.2	142.6	7.6%	58 624	1 593	153.9	3 614 727
EQUITY DERIVATIVES TOTAL	125	YEAR 2013	16 356 005	4 178 291	413 561.7	2 612.5	145.6%	130 848	33 426	3 308.5	3 933 415
	22	MAY 2013	2 711 683	743 862	70 505.4	502.7	128.9%	123 258	33 812	3 204.8	4 813 734
	20	JUN 2013	2 639 395	734 402	81 236.6	333.0	192.2%	131 970	36 720	4 061.8	3 933 415
ELECTRICITY FUTURES	125	YEAR 2013	2 958	533	646.5	10 150 876	..	24	4	5.2	1 558
	22	MAY 2013	371	61	98.8	1 588 417	..	17	3	4.5	1 000
	20	JUN 2013	715	147	134.4	2 160 052	..	36	7	6.7	1 558
WHEAT FUTURE	112	YEAR 2013	110	46	1.6	5 500	..	1	0	0.0	17
	22	MAY 2013	..	..	..	..	..	..	..	..	17
	20	JUN 2013	..	..	..	..	..	..	..	..	17
IDEM TOTAL	125	YEAR 2013	16 359 073	4 178 870	414 209.9	..	..	130 873	33 431	3 313.7	3 934 990
	22	MAY 2013	2 712 054	743 923	70 604.2	..	..	123 275	33 815	3 209.3	4 814 751
	20	JUN 2013	2 640 110	734 549	81 371.0	..	..	132 006	36 727	4 068.6	3 934 990

(1) The notional turnover is computed as the product of contracts number, price and index multiplier for index futures; contracts number, price and size multiplier for stock futures; contracts number, strike prices and index multiplier for index options; contracts number, strike prices and sizes for stock options.

(2) Premium in euro million for options and equity derivatives total; traded MWH for electricity future, tons for wheat future.

(3) As percentage on shares turnover (total shares for Index derivatives and Idem total; shares with underlying listed on Borsa Italiana for stock futures and stock options).

(4) Open positions at the end of period. Net figures for futures, gross figures for options.

(5) Includes data for FTSE MIB Dividend Futures.

(6) Includes data for FTSE 100 miniFutures.

(7) Includes data for pan-european stock futures.

#### Additional Information:

This publication uses only electronic trading data; trades that are reported to Borsa Italiana under its rules but executed away from its electronic order books are not included.

There were 20 trading days in June 2013 and 21 trading days in June 2012 on Borsa Italiana.

There were 125 trading days in the period January - June 2013 and 127 trading days in the period January - June 2012.

The publication of this document does not represent solicitation, by Borsa Italiana S.p.A., of public saving and is not to be considered as a recommendation by Borsa Italiana S.p.A. as to the suitability of the investment, if any, herein described.

This document is not to be considered complete and is meant for information and discussion purposes only. Borsa Italiana S.p.A. accepts no liability, arising, without limitation to the generality of the foregoing, from inaccuracies and/or mistakes, for decisions and/or actions taken by any party based on this document.

AGREX, BEST VENUE INDICATOR, BORSA ITALIANA and BORSA ITALIANA's logo, BORSA ITALIANA ITALIAN STOCK EXCHANGE, BORSA VIRTUALE, BORSAM@T, CITY FOR GOOD, DDM, ELITE, ETFplus, EUROMOT, EXPANDI, EXTRAMOT, IDEM-THE ITALIAN DERIVATIVES MARKET, IDEX, MARKET CONNECT, MIB, MIB 30, MIBTEL, MIDEX, MINIFIB, MIV, MOT, MTA, MTF, NIS, SEDEX, STAR, STAR SEGMENTO TITOLI CON ALTI REQUISITI, TECHSTAR are registered trademarks owned by Borsa Italiana S.p.A.

London Stock Exchange, the coat of arms device and AIM are registered trademarks of London Stock Exchange plc.

FTSE is a trademark of the London Stock Exchange Group companies and is used by FTSE International Limited under licence.

The above trademarks and any other trademark owned by London Stock Exchange Group cannot be used without express written consent by the Company having the ownership on the same.

© June 2013 Borsa Italiana S.p.A.. All rights reserved.

*Register on line if you want receive Monthly Update at your preferred address as soon as the new release is published.*

*<http://www.borsaitalia.it/bitApp/servlet/RegistrationController?target=frmBase&lang=en>*

4 July 2013 - 18:00

Markets Analysis  
Piazza degli Affari, 6 - 20123 Milano  
T +39 02 724261 | Fax +39 02 8646.4323  
e-mail: [markets\\_analysis@borsaitaliana.it](mailto:markets_analysis@borsaitaliana.it)  
[www.borsaitaliana.it](http://www.borsaitaliana.it)



**London**  
Stock Exchange Group