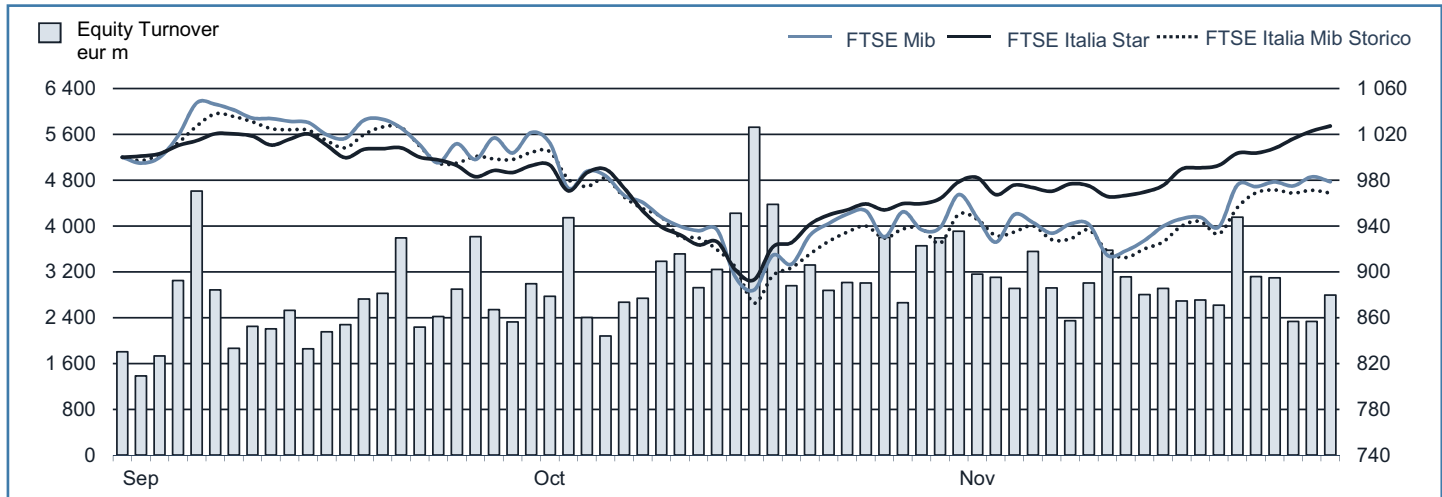




MONTHLY UPDATE

November 2014

EQUITY DAILY TURNOVER AND MAIN INDICES (BASE = 1000 29.08.2014)



STOCK INDICES

	31 OCT 2014	28 NOV 2014	Var. % MoM	Var. % 2013 end	Volatility Nov 2014
FTSE Italia Mib Storico	▲ 16 331	16 649	1.9%	3.7%	17.2%
FTSE Mib	▲ 19 784	20 015	1.2%	5.5%	24.9%
FTSE Italia Star	▲ 17 742	18 626	5.0%	9.4%	10.8%

FTSE MIB VOLATILITY



TRADING - DAILY AVERAGE

	(*)	JAN-NOV 2013		JAN-NOV 2014		NOV 2014	
		Trades Number	Turnover eur m	Trades Number	Turnover eur m	Trades Number	Turnover eur m
Shares	▲	228 295	2 172.1	264 664	2 854.9	265 171	2 962.6
Securitized Derivatives	▲	6 614	64.9	9 355	98.6	11 382	90.7
ETF Plus	▲	11 155	263.5	11 974	288.8	13 455	287.4
Fixed Income	▼	24 228	1 352.8	19 545	1 323.2	14 910	983.7

(*) Indicators are related to turnover figures.

LISTING

	30 DEC 2013	31 OCT 2014	28 NOV 2014
MTA Domestic	243	238	239
of which STAR	67	67	67
MTA Foreign	5	5	5
of which STAR	1	1	1
MIV (Investment Companies and SPAC)	6	6	6
MTA International	36	36	36
AIM Italia - MAC	36	55	55
Listed Companies Total	326	340	341
Warrant	27	30	30
MIV Closed End Funds	25	26	26
ETF	658	668	669
ETC/ETN	177	249	250
ETF Plus Total	835	917	919
Securitized Derivatives	5 140	5 759	5 445
Convertibles Bonds	8	13	13
Mot - Government Bonds	108	115	114
Mot - Bonds	689	480	456
Mot - Eurobonds and ABSs	400	526	538
MOT Total	1 197	1 121	1 108
Extratot	381	524	540
Fixed Income Total	1 578	1 645	1 648

MOST TRADED SHARES IN THE MONTH

Shares	Mkt	Turnover eur m	% TOT
Unicredit	MTA	9 863.9	16.6%
Intesa Sanpaolo	MTA	8 228.7	13.9%
Eni	MTA	5 829.3	9.8%
Enel	MTA	3 724.4	6.3%
Fiat Chrysler Automobiles	MTA	2 937.4	5.0%

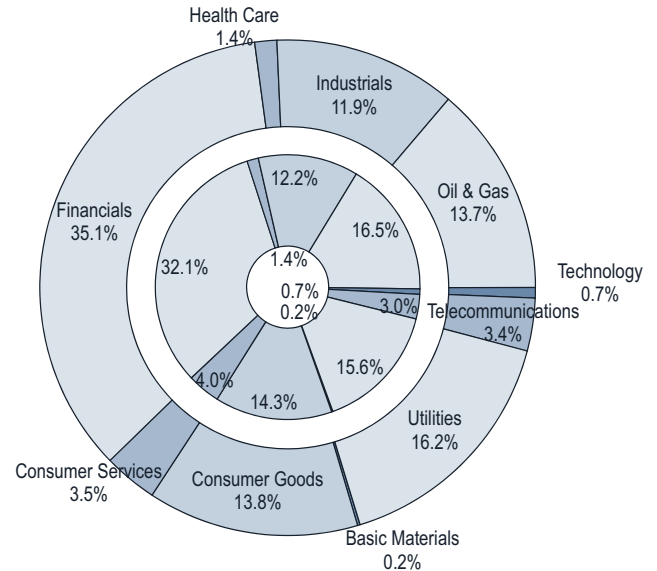
BEST PERFORMANCES IN THE MONTH

Shares	Mkt	Var. % MoM	Var % 2013 end
Salini Impregilo	MTA	42.6%	-35.9%
Tiscali	MTA	41.8%	39.3%
Go Internet	AIMMA	34.5%	...
Yoox	MTA	29.9%	-41.4%
Mondadori Editore	MTA	29.7%	-38.2%

Performances are computed with no-rounded official prices.
Performance is not included for shares not listed at 2013 end or unlimited suspended at November 2014 end

CAPITALISATION

Domestic Companies Capitalisation (eur m)	30 DEC 2013	31 OCT 2014	28 NOV 2014
MTA Capitalisation	445 167	469 741	483 119
<i>of which STAR</i>	21 475	21 707	22 548
MIV (Investment Companies e SPAC)	291	240	241
AIM Italia - MAC	1 183	1 974	1 995
Total	446 641	471 955	485 355
Capitalisation (% GDP)			
MTA	28.6%	29.7%	30.5%
<i>of which STAR</i>	1.4%	1.4%	1.4%
Total	28.7%	29.8%	30.6%
Capitalisation (% Tot.)			
FTSE MIB Shares	80.8%	83.3%	81.0%

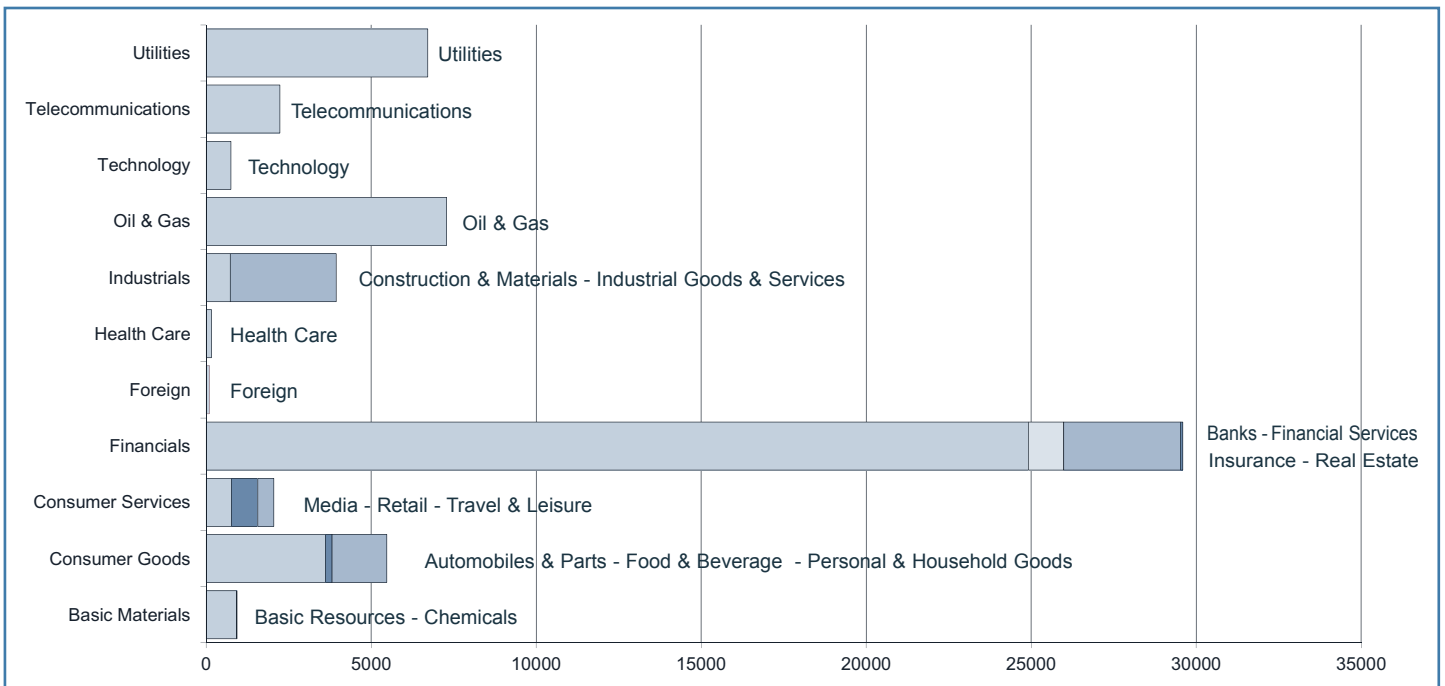


Note: internal chart: capitalisation on 30.12.2013;
external chart: capitalisation on 28.11.2014.

TRADING

SHARES	JAN-NOV 2013		JAN-NOV 2014		NOV 2014		OTHER INSTRUMENTS	JAN-NOV 2013		JAN-NOV 2014		NOV 2014	
	Trades Number	Turnover eur m	Trades Number	Turnover eur m	Trades Number	Turnover eur m		Trades Number	Turnover eur m	Trades Number	Turnover eur m	Trades Number	Turnover eur m
MTA Domestic	51 265 609	492 158.6	59 117 848	645 286.4	5 111 603	57 581.3	SeDex	1 547 777	15 177.9	2 179 757	22 982.3	227 639	1 813.3
<i>of which STAR</i>	2 596 249	8 319.1	4 633 807	17 523.4	320 241	1 236.1	Warrant	51 616	39.2	63 985	61.5	2 745	1.9
MTA Foreign	1 792 398	14 185.7	2 206 082	18 296.1	168 632	1 575.5	MIV Closed End Funds	53 248	140.3	72 620	283.5	5 290	19.3
<i>of which STAR</i>	15 156	93.1	38 867	300.4	2 931	26.6	ETF	2 164 226	56 319.2	2 131 039	60 657.9	184 876	4 927.0
MIV Invest. Companies	52 106	62.0	62 851	86.8	4 248	3.4	ETC	445 988	5 349.7	658 837	6 627.5	84 224	821.1
MTA International	270 565	1 740.1	176 271	1 213.9	11 041	71.4	ETF Plus	2 610 214	61 668.9	2 789 876	67 285.5	269 100	5 748.1
AIM Italia - MAC	40 302	126.9	103 615	300.5	7 893	19.7	Convertible Bonds	35 971	571.7	12 864	162.4	764	6.5
Total	53 420 980	508 273.3	61 666 667	665 183.7	5 303 417	59 251.3	Subscription rights	141 006	53.9	1 217 233	2 684.7	73 910	88.7
FTSE MIB Shares							Mot - Government Bonds	4 417 564	291 845.0	3 366 229	283 272.9	203 898	17 748.7
% Shares Total	77.9%	91.8%	74.3%	91.1%	78.1%	93.2%	Mot - Bonds	841 496	14 180.7	555 821	9 409.7	35 057	573.9
							Mot - Eurobonds and ABSs	320 348	5 816.0	555 532	9 848.1	54 897	1 018.7
							ExtraMOT	89 994	4 706.7	76 487	5 766.4	4 349	332.1
							Fixed Income Total	5 669 402	316 548.4	4 554 069	308 297.1	298 201	19 673.4

INDUSTRY/SUPERSECTOR TURNOVER (eur m)



NEW LISTINGS

RECENT EVENTS

ISSUER	MKT	SHARES	TRADING FIRST DAY	EVENT	1st DAY CAPITALISATION (eur m)	SPONSOR (NOMAD for AIM Italia)
Mailup	AIMMA	O	29.07.2014	IPO	23.34	Integrae Sim
Tech-value	AIMMA	O	05.08.2014	IPO	13.88	Integrae Sim
Go Internet	AIMMA	O	06.08.2014	IPO	16.42	Banca Pop Vicenza
Tecnoinvestimenti	AIMMA	O	06.08.2014	IPO	108.49	Envent
Fiat Chrysler Automobiles N.V.	MTA	O	13.10.2014	Merger of Fiat S.p.A. in Fiat Chrysler Automobiles N.V.	8 527.70	..
Bio On	AIMMA	O	24.10.2014	IPO	81.24	Envent
RAI Way	MTA	O	19.11.2014	IPO	832.55	Banca IMI

NEWLY ADMITTED COMPANIES (THROUGH IPOs, SPOs AND INSTITUTIONAL PLACINGS)

Security:	BLUE NOTE				Total	of which Public	of which Institutionals
Offer period:	22.07.2014	Offered shares:	max	450 000	min	max 450 000
Offer price:	3.12	Greenshoe:	max	-	-
Bookbuilding range:	Requested shares:
Minimum lot:	Allotted shares:	437 382	437 382
Placed stake:	30.4%	- of which greenshoe:	-	-	-
		Capital raised (ML euro):	1.36	1.36
		- from newly issued shares:	1.36	1.36
Blt alphabetical code:						
Bloomberg code:	Market and segment:	AIM Italia - Mercato Alternativo del Capitale			
Reuters code:	Sector:			
Security:	MAIL UP				Total	of which Public	of which Institutionals
Offer period:	29.07.2014	Offered shares:	max	1 200 000	min	max 1 200 000
Offer price:	2.50	Greenshoe:	max	-	-
Bookbuilding range:	Requested shares:
Minimum lot:	Allotted shares:	1 200 000	1 200 000
Placed stake:	15.0%	- of which greenshoe:	-	-	-
		Capital raised (ML euro):	3.00	3.00
		- from newly issued shares:	3.00	3.00
Blt alphabetical code:						
Bloomberg code:	Market and segment:	AIM Italia - Mercato Alternativo del Capitale			
Reuters code:	Sector:			
Security:	TECH-VALUE				Total	of which Public	of which Institutionals
Offer period:	05.08.2014	Offered shares:	max	1 100 000	min	max 1 100 000
Offer price:	4.15	Greenshoe:	max	-	-
Bookbuilding range:	Requested shares:
Minimum lot:	Allotted shares:	410 040	410 040
Placed stake:	13.5%	- of which greenshoe:	-	-	-
		Capital raised (ML euro):	1.70	1.70
		- from newly issued shares:	1.70	1.70
Blt alphabetical code:						
Bloomberg code:	Market and segment:	AIM Italia - Mercato Alternativo del Capitale			
Reuters code:	Sector:			
Security:	GO INTERNET				Total	of which Public	of which Institutionals
Offer period:	06.08.2014	Offered shares:	max	4 359 999	min	1 814 545	max 2 545 454
Offer price:	2.75	Greenshoe:	max	-	-
Bookbuilding range:	2.7500-4.0000	Requested shares:
Minimum lot:	500	Allotted shares:	1 828 500	240 500	1 588 000
Placed stake:	30.5%	- of which greenshoe:	-	-	-
		Capital raised (ML euro):	5.03	0.66	4.37
		- from newly issued shares:	5.03
Blt alphabetical code:						
Bloomberg code:	Market and segment:	AIM Italia - Mercato Alternativo del Capitale			
Reuters code:	Sector:			
Security:	TECNOINVESTIMENTI				Total	of which Public	of which Institutionals
Offer period:	06.08.2014	Offered shares:	max	10 700 000	min	max 10 700 000
Offer price:	3.40	Greenshoe:	max	-	-
Bookbuilding range:	Requested shares:
Minimum lot:	Allotted shares:	6 700 000	6 700 000
Placed stake:	21.1%	- of which greenshoe:	-	-	-
		Capital raised (ML euro):	22.78	22.78
		- from newly issued shares:	22.78	22.78
Blt alphabetical code:						
Bloomberg code:	Market and segment:	AIM Italia - Mercato Alternativo del Capitale			
Reuters code:	Sector:			
Security:	BIO ON				Total	of which Public	of which Institutionals
Offer period:	24.10.2014	Offered shares:	max	1 375 000	min	max 1 375 000
Offer price:	5.00	Greenshoe:	max	-	-
Bookbuilding range:	Requested shares:
Minimum lot:	Allotted shares:	1 375 000	1 375 000
Placed stake:	10.4%	- of which greenshoe:	-	-	-
		Capital raised (ML euro):	6.88	6.88
		- from newly issued shares:	6.19	6.19
Blt alphabetical code:						
Bloomberg code:	Market and segment:	AIM Italia - Mercato Alternativo del Capitale			
Reuters code:	Sector:			
Security:	RAI WAY				Total	of which Public	of which Institutionals
Offer period:	03.11.2014 13.11.2014	Offered shares:	max	83 000 000	min	4 150 000	max 74 700 000
Offer price:	2.95	Greenshoe:	max	12 000 000	-	-
Bookbuilding range:	Requested shares:	173 733 020	16 818 000	156 915 020
Minimum lot:	1 000	Allotted shares:	95 000 000	11 864 000	83 136 000
Placed stake:	34.9%	- of which greenshoe:	12 000 000	-	12 000 000
		Capital raised (ML euro):	280.25	35.00	245.25
		- from newly issued shares:	-	-	-
Blt alphabetical code:						
Bloomberg code:	Market and segment:	MTA -			
Reuters code:	Sector:			

Note: The column "Total" includes, in addition to public and institutional tranches, also prospective offers reserved to other investors (family & friends etc.). Allotted shares figure doesn't include overallotted shares until the greenshoe option is possibly exercised.

RIGHT ISSUES

N°	MKT SEG.	SECURITIES	OPTION RIGHTS TRADING PERIOD		OFFER PRICE	OFFERED SHARES	ISSUE RATE	UNEXERCISED PREEMPTIVE RIGHTS (%)	ALLOTTED SHARES	CAPITAL RAISED (eur m)
			FROM	TO						
19	AIM-MAC	VALORE ITALIA OCV	18.08.2014	12.09.2014	1125.00	4 400	1ocv:23474 ord	36.8%	2 782 AAI	3.1
20	MTA/STAR	IGD - IMM. GRANDE DISTRIBUZIONE ORD	29.09.2014	17.10.2014	0.50	396 186 626	11:10 ord , 11:10 rights	0.2%	396 186 626	199.7
21	MTA -	BENI STABILI ORD	29.09.2014	17.10.2014	0.42	353 122 982	1ord :8 rights	0.6%	353 122 982	149.7
22	AIM-MAC	FINTEL ENERGIA GROUP ORD	13.10.2014	31.10.2014	3.13	1 594 249	1:15 ord , 1:15 rights	93.3%	1 594 249	5.0
23	MTA -	TREVI FINANZIARIA INDUSTRIALE ORD	20.10.2014	06.11.2014	2.10	94 588 965	27:20 ord , 27:20 rights	0.3%	94 588 965	198.6
24	AIM-MAC	TE WIND ORD	20.10.2014	18.11.2014	1.00	4 862 616	3ord:7rights	93.7%	305 175 AAI	0.3
25	MTA -	CATTOLICA ASSICURAZIONI ORD	10.11.2014	27.11.2014	4.25	117 500 880	21:10 ord , 21:10 rights	0.5%	117 500 880	499.4
26	AIM-MAC	VITA SOCIETA EDITORIALE ORD	10.11.2014	27.11.2014	0.28	6 669 285	1:2 ord , 1:2 rights	67.3%	2 182 950 AAI	0.6

The right issues by PRIMI SUI MOTORI is currently underway.

SCRIP RIGHT ISSUES

N°	MKT SEG.	SECURITIES	EFFECTIVE DATE	NOMINAL VALUE		ISSUED SHARES	ISSUE RATE	VALUE (eur m)
				BEFORE	AFTER			
4	AIM-MAC	FRENDY ENERGY	26.05.2014	-	-	8 940 196	1:3	2.2
5	MTA	BANCA POPOLARE SONDRIO	09.06.2014	3.000	3.000	30 814 798	1:10	92.4
6	MTA	ANSALDO STS	14.07.2014	0.5000	0.5000	20 000 000	1:9	10.0
7	MTA	BANCO SANTANDER	14.07.2014	0.5000	0.5000	240 368 992	1:49	120.2
8	MTA	BANCO SANTANDER	17.10.2014	0.5000	0.5000	260 610 676	1:46	130.3

TOTAL MONEY RAISED (EUR M)

	NUMBER	SECURITIES		MONEY RAISED	SHARE-HOLDERS	INVESTORS			
		NEWLY ISSUED	SOLD			PUBLIC	EMPLOYEES	INSTIT. INVESTORS	OTHER
a) YEAR 2014 - CAPITAL INCREASES	26	11 074.1	-	11 074.1	11 074.1	-	-	-	-
MTA	20	11 059.4	-	11 059.4	11 059.4	-	-	-	-
- of which Star	-	-	-	-	-	-	-	-	-
MIV	-	-	-	-	-	-	-	-	-
AIM Italia - Mercato Alternativo del Capitale	6	14.7	-	14.7	14.7	-	-	-	-
b) YEAR 2014 - OPVS TOTAL (Excluded Closed-end funds)	24	745.5	2 128.4	2 873.9	-	490.5	18.9	2 364.5	-
MTA	5	580.47	2 110.67	2 691.14	-	487.75	18.36	2 185.02	-
- of which Star	-	-	-	-	-	-	-	-	-
MIV	-	-	-	-	-	-	-	-	-
AIM Italia - Mercato Alternativo del Capitale	19	165.00	17.76	182.75	-	2.73	0.56	179.46	-
NEW LISTINGS	24	745.47	2 128.42	2 873.9	-	490.49	18.92	2 364.48	-
MTA	5	580.47	2 110.67	2 691.14	-	487.75	18.36	2 185.02	-
- of which Star	-	-	-	-	-	-	-	-	-
MIV	-	-	-	-	-	-	-	-	-
AIM Italia - Mercato Alternativo del Capitale	19	165.00	17.76	182.75	-	2.73	0.56	179.46	-
YEAR 2014 - MONEY RAISED (a+b)	50	11 819.6	2 128.4	13 948.0	11 074.1	490.5	18.9	2 364.5	-

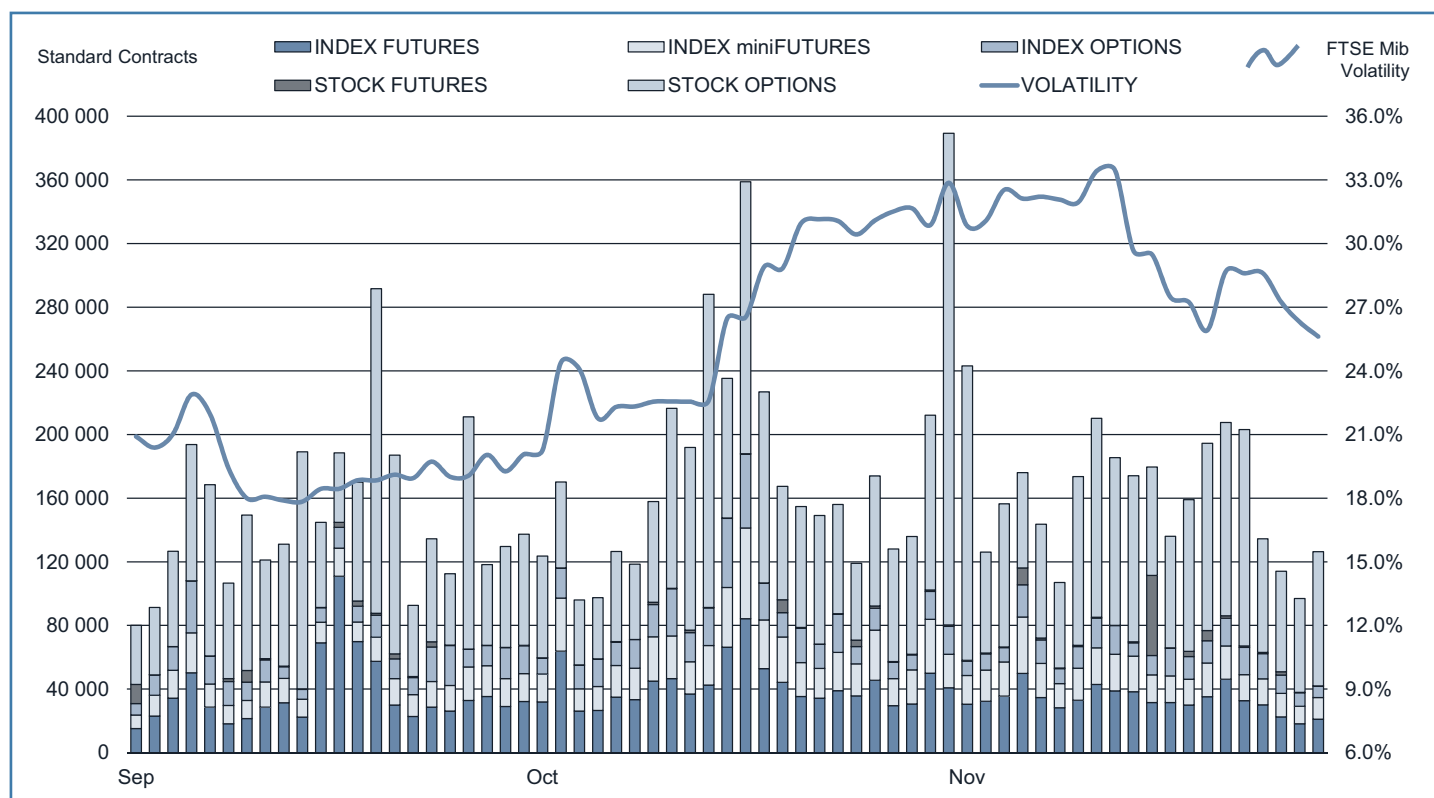
TAKEOVER BIDS

N°	BIDDER	OFFER TYPE	TARGET SHARES	OFFER PERIOD		PRICE (eur)	SHARES		STAKE OWNED AFTER OFFER	TURNOVER (eur m)
				FROM	TO		REQUESTED	BOUGHT		
1	HAWORTH ITALY HOLDING S.R.L.	MANDATORY	POLTRONA FRAU	28.04.2014	23.05.2014	2.960	58 094 459	45 316 731	90.89%	134.14
2	SVILUPPO IDRICO SRL	VOLUNTARY	ACQUE POTABILI	14.04.2014	30.05.2014	1.200	13 785 355	9 431 746	87.91%	11.32
3	CORPORACION AMERICA ITALIA S.R.L.	MANDATORY	AEROPORTO DI FIRENZE	29.04.2014	03.06.2014	13.380	6 016 989	1 407 712	48.98%	18.84
4	CORPORACION AMERICA ITALIA S.R.L.	VOLUNTARY	SAT	29.04.2014	03.06.2014	14.220	7 159 198	2 597 164	53.73%	36.93
5	VODAFONE GLOBAL ENTERPRISE LTD	VOLUNTARY	COBRA	07.07.2014	25.07.2014	1.490	97 061 271	94 471 802	97.33%	140.76
6	B.F. HOLDING SPA	MANDATORY	BONIFICHE FERRARESI	10.07.2014	01.08.2014	30.500	2 228 900	1 061 117	79.24%	32.36
7	WHIRLPOOL ITALIA HOLDINGS	MANDATORY	INDESIT COMPANY	03.11.2014	21.11.2014	11.000	34 244 635	31 301 180	87.78%	344.31

Notes: AAI Before unexercised preemptive right auction
AEG Before greenshoe
AIMMA AIM - Mercato Alternativo del Capitale

COMP Compendium
MTAI MTA International
ST Star Segment

IDEM - DERIVATIVES TRADING



	DAYS	MONTH	TURNOVER (1)						OPEN INTEREST (4)		
			TOTAL			DAILY AVERAGE			NUMBER OF CONTRACTS		
			STANDARD CONTRACTS	TRADES NUMBER	TURNOVER eur m	OTHER (2)	% TOT SHARES (3)	STANDARD CONTRACTS	TRADES	TURNOVER eur m	
INDEX FUTURES (5)	233	YEAR 2014	7 622 534	5 157 802	778 248.5	..	117.0%	32 715	22 136	3 340.1	45 813
	23	OCT 2014	976 621	725 241	93 783.6	..	121.5%	42 462	31 532	4 077.5	46 099
	20	NOV 2014	663 850	481 605	64 179.6	..	108.3%	33 193	24 080	3 209.0	45 813
INDEX MINI-FUTURES (6)	233	YEAR 2014	3 798 865	2 761 863	77 128.9	..	11.6%	16 304	11 853	331.0	8 011
	23	OCT 2014	581 702	394 888	11 149.0	..	14.4%	25 291	17 169	484.7	5 395
	20	NOV 2014	383 976	275 004	7 425.2	..	12.5%	19 199	13 750	371.3	8 011
INDEX OPTIONS	233	YEAR 2014	3 775 425	551 064	191 968.3	3 694.9	28.9%	16 204	2 365	823.9	404 323
	23	OCT 2014	453 897	72 063	21 797.2	469.8	28.2%	19 735	3 133	947.7	411 341
	20	NOV 2014	266 709	45 199	12 880.7	232.7	21.7%	13 335	2 260	644.0	404 323
STOCK FUTURES (7)	233	YEAR 2014	413 934	6 883	1 152.5	..	0.2%	1 777	30	4.9	96 692
	23	OCT 2014	22 775	593	49.2	..	0.1%	990	26	2.1	92 639
	20	NOV 2014	81 860	665	136.5	..	0.2%	4 093	33	6.8	96 692
SINGLE STOCK DIVIDEND FUTURES	233	YEAR 2014	132 808	352	29.7	570	2	0.1	134 859
	23	OCT 2014	10 200	38	2.5	443	2	0.1	132 459
	20	NOV 2014	3 060	20	1.0	153	1	0.05	134 859
STOCK OPTIONS	233	YEAR 2014	20 013 215	508 196	58 315.8	2 528.6	9.3%	85 894	2 181	250.3	5 261 686
	23	OCT 2014	2 157 536	55 322	6 416.6	308.1	8.6%	93 806	2 405	279.0	5 026 331
	20	NOV 2014	1 850 615	45 875	5 497.0	212.0	9.6%	92 531	2 294	274.9	5 261 686
EQUITY DERIVATIVES TOTAL	233	YEAR 2014	35 756 781	8 986 160	1 106 843.7	6 223.5	166.4%	153 463	38 567	4 750.4	5 951 384
	23	OCT 2014	4 202 731	1 248 145	133 197.9	777.9	172.6%	191 033	56 734	6 054.5	5 714 264
	20	NOV 2014	3 250 070	848 368	90 120.0	444.7	152.1%	162 504	42 418	4 506.0	5 951 384
ELECTRICITY FUTURES	233	YEAR 2014	7 160	1043	746.0	13 616 529	..	31	4	3.2	1 782
	23	OCT 2014	535	63	44.9	790 610	..	23	3	2.0	3 099
	20	NOV 2014	245	35	21.2	380 409	..	12	2	1.1	1 782
WHEAT FUTURE	233	YEAR 2014	826	247	14.0	41 300	..	3.5	1.1	0.1	157
	23	OCT 2014	525	175	9	26 250	..	22.8	7.6	0.4	120
	20	NOV 2014	157	23	3	7 850	..	7.9	1.2	0.1	157
IDEM TOTAL	233	YEAR 2014	35 764 767	8 987 450	1 107 603.7	153 497	38 573	4 753.7	5 953 323
	23	OCT 2014	4 203 791	1 248 383	133 251.9	182 774	54 278	5 793.6	5 717 483
	20	NOV 2014	3 250 472	848 426	90 144.1	162 524	42 421	4 507.2	5 953 323

(1) The notional turnover is computed as the product of contracts number, price and index multiplier for index futures; contracts number, price and size multiplier for stock futures; contracts number, strike prices and index multiplier for index options; contracts number, strike prices and sizes for stock options.

(2) Premium in euro million for options and equity derivatives total; traded MWH for electricity future, tons for wheat future.

(3) As percentage on shares turnover (total shares for Index derivatives and Idem total; shares with underlying listed on Borsa Italiana for stock futures and stock options).

(4) Open positions at the end of period. Net figures for futures, gross figures for options.

(5) Includes data for FTSE MIB Dividend Futures.

(6) Includes data for FTSE 100 miniFutures.

(7) Includes data for pan-european stock futures.

Additional Information:

This publication uses only electronic trading data; trades that are reported to Borsa Italiana under its rules but executed away from its electronic order books are not included.

There were 20 trading days in November 2014 and 21 trading days in November 2013 on Borsa Italiana.

There were 233 trading days in the period January - November 2014 and 234 trading days in the period January - November 2013.

This document contains text, data, graphics, photographs, illustrations, artwork, names, logos, trade marks, service marks and information ("Information") connected with Borsa Italiana S.p.A. ("Borsa Italiana").

All reasonable efforts have been made to ensure that the Information in this document was correct at the time of publication. However, Borsa Italiana Spa accepts no liability for decisions taken, or systems-related or other work carried out by any party based on this document. The publication of this document does not represent solicitation, by Borsa Italiana, of public saving and is not to be considered as a recommendation by Borsa Italiana as to the suitability of the investment, if any, herein described.

© November 2014 Borsa Italiana S.p.A.. All rights reserved.

Register on line if you want receive Monthly Update at your preferred address as soon as the new release is published.
<http://www.borsaitalia.it/bitApp/servlet/RegistrationController?target=frmBase&lang=en>

2nd December 2014 - 17:00

Markets Analysis
Piazza degli Affari, 6 - 20123 Milano
T +39 02 724261 | Fax +39 02 8646.4323
e-mail: markets_analysis@borsaitaliana.it
www.borsaitaliana.it



London
Stock Exchange Group