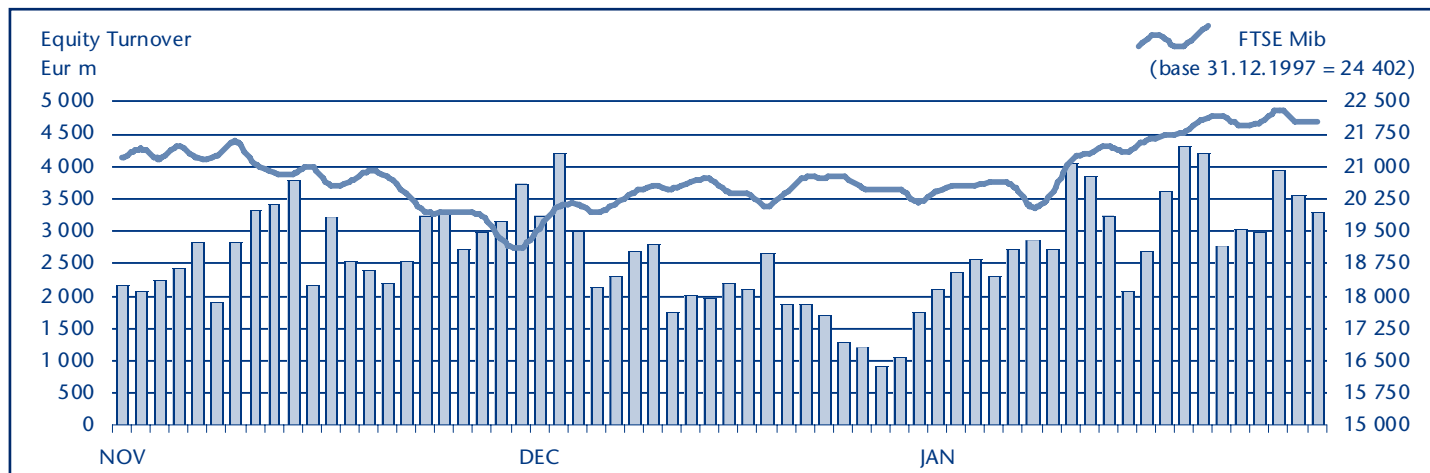


## EQUITY DAILY TURNOVER AND FTSE MIB EVOLUTION



## FTSE MIB SHARES (BASKET UPDATED AS FROM 03.01.2011)

	PRICE (eur)		CAPITALISATION (eur m)		TURNOVER (eur m)	
	31 JAN 2011	VAR % MOM	30 DEC 2010	31 JAN 2011	DEC 2010	JAN 2011
A2A	1.0845	5.0%	3 236.7	3 397.8	198.6	221.8
Ansaldo Sts	10.9152	2.3%	1 280.9	1 309.8	144.7	120.1
Atlantia	16.6246	9.0%	9 154.7	9 979.7	528.6	1 066.6
Autogrill	10.5207	-0.7%	2 694.7	2 676.5	155.8	221.7
Azimut Holding	7.7031	13.5%	972.6	1 103.5	150.5	186.0
Banca Monte Paschi Siena	0.9269	8.7%	4 728.7	5 140.3	273.9	455.7
Banca Popolare Milano	3.0785	16.7%	1 094.5	1 277.8	308.2	446.6
Banco Popolare	2.5757	4.1%	2 186.8	1 649.7	478.6	1 287.7
Bulgari	7.6104	-6.0%	2 442.2	2 301.0	269.6	351.4
Buzzi Unicem	9.1787	6.4%	1 425.9	1 517.7	174.6	261.8
Campari	4.6551	-5.1%	2 850.1	2 703.7	136.6	189.4
Diasorin	35.0538	9.9%	1 776.4	1 952.3	127.9	167.1
Enel	4.1224	9.6%	35 368.3	38 764.8	2 541.0	4 159.4
Enel Green Power	1.6113	2.1%	7 890.6	8 056.3	273.9	208.6
Eni	17.2197	5.0%	65 680.7	68 971.0	3 814.2	5 910.4
Exor	22.5598	-6.9%	3 885.1	3 615.4	460.5	616.1
Fiat	6.9581	6.3%	16 473.2	7 599.9	7 785.3	6 145.7
Fiat Industrial	9.8885	..	..	10 801.5	..	4 683.4
Finmeccanica	9.8081	15.5%	4 909.4	5 670.6	406.4	504.9
Fondiaria - Sai	6.6662	5.4%	787.6	829.8	274.3	401.7
Generali	15.8583	10.9%	22 257.4	24 689.3	2 140.4	2 765.2
Impregilo	2.2052	3.9%	853.8	887.5	88.2	164.3
Intesa Sanpaolo	2.4086	17.9%	24 199.7	28 540.2	4 392.9	7 929.4
Lottomatica	10.6248	13.8%	1 606.7	1 827.6	164.6	206.3
Luxottica Group	22.0410	-3.6%	10 657.0	10 272.8	353.9	487.7
Mediaset	4.6961	3.4%	5 364.7	5 547.1	545.5	763.0
Mediobanca	7.3628	10.1%	5 757.5	6 340.2	303.1	481.6
Mediolanum	3.7009	19.3%	2 274.2	2 712.3	119.9	232.3
Parmalat	2.3024	11.8%	3 567.5	3 991.4	351.6	536.4
Pirelli & C	5.5759	-8.3%	2 893.9	2 652.7	273.2	420.1
Prysmian	14.7333	15.7%	2 318.1	2 681.9	344.4	782.4
Saipem	36.1858	-1.9%	16 284.7	15 967.7	1 310.4	1 613.8
Snam Rete Gas	3.8334	2.7%	13 331.5	13 688.5	409.1	517.4
STMicroelectronics (foreign)	8.8626	13.0%	7 141.8	8 068.7	905.1	1 597.2
Telecom Italia	1.0452	7.6%	13 020.0	14 013.7	1 049.4	1 608.8
Tenaris (foreign)	17.1215	-7.0%	21 736.3	20 212.5	980.2	1 256.2
Terna	3.1887	0.5%	6 360.6	6 391.4	565.6	601.2
Tod's	74.4507	0.6%	2 265.7	2 278.9	303.6	376.4
Ubi Banca	7.5059	13.9%	4 212.5	4 797.4	284.2	478.4
Unicredit	1.8115	15.4%	30 262.3	34 913.2	11 424.6	14 745.2

### Markets Analysis

Piazza Affari, 6 - 20123 Milano  
 T +39 02 72426.478 | Fax +39 02 8646.4323  
 e-mail: [research@borsaitaliana.it](mailto:research@borsaitaliana.it)  
[www.borsaitaliana.it](http://www.borsaitaliana.it)