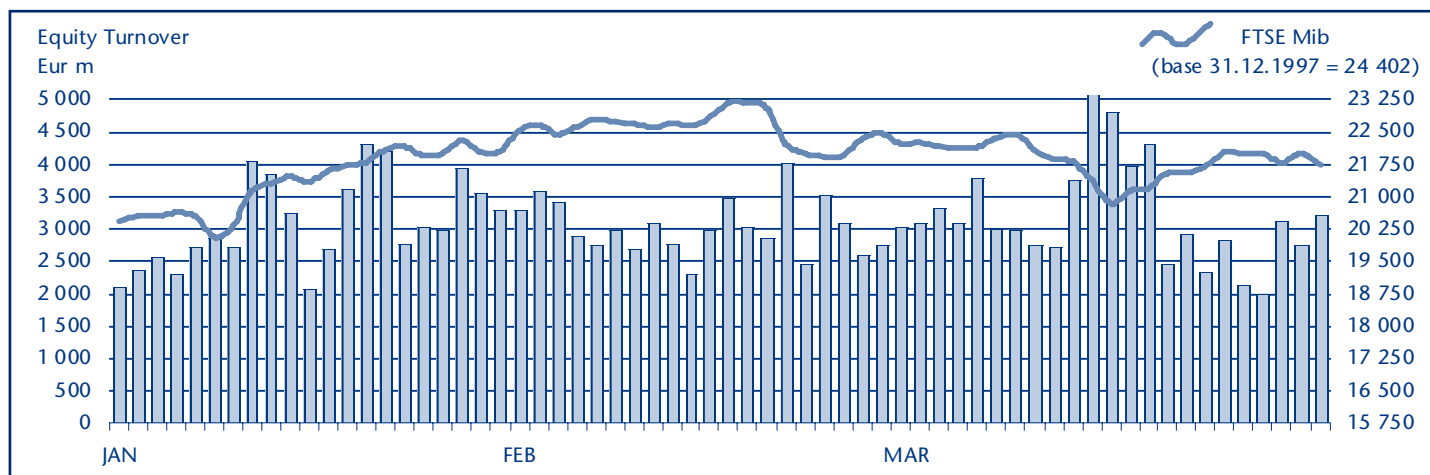


## EQUITY DAILY TURNOVER AND FTSE MIB EVOLUTION



## FTSE MIB SHARES (BASKET UPDATED AS FROM 21.03.2011)

	PRICE (eur)			CAPITALISATION (eur m)		TURNOVER (eur m)	
	31 MAR 2011	VAR % MOM	VAR. % 2010 END	28 FEB 2011	31 MAR 2011	MAR 2011	JAN-MAR 2011
A2A	1.1485	-0.9%	11.2%	3 630.9	3 598.2	267.6	724.0
Ansaldo Sts	10.3295	1.2%	-3.2%	1 224.7	1 239.5	152.5	410.8
Atlantia	16.2513	-2.1%	6.6%	9 962.0	9 755.6	827.5	2 634.6
Autogrill	9.9816	-2.5%	-5.8%	2 605.4	2 539.3	376.1	753.0
Azimut Holding	7.8879	6.3%	16.2%	1 062.6	1 130.0	220.3	549.7
Banca Monte Paschi Siena	0.8847	-8.6%	3.8%	5 369.0	4 906.3	579.6	1 660.9
Banca Popolare Milano	2.6703	-9.1%	1.3%	1 219.9	1 108.4	566.5	1 437.6
Banco Popolare	2.1165	-16.8%	-14.5%	1 629.9	3 732.4	1 816.8	5 243.4
Bulgari	12.2425	60.0%	51.3%	2 312.8	3 701.5	2 387.6	2 928.1
Buzzi Unicem	10.3307	0.3%	19.8%	1 702.7	1 708.2	310.5	955.0
Campari	4.7860	3.2%	-2.5%	2 693.5	2 779.7	205.5	520.8
Diasorin	31.0681	-5.2%	-2.6%	1 825.2	1 730.4	147.4	523.3
Enel	4.4571	3.1%	18.5%	40 632.7	41 911.6	4 767.0	12 621.3
Enel Green Power	1.9431	12.6%	23.1%	8 627.7	9 715.6	667.1	1 192.0
Eni	17.4133	-1.2%	6.2%	70 625.2	69 746.6	6 793.2	19 874.9
Exor	21.7779	-1.4%	-10.2%	3 539.1	3 490.1	358.3	1 379.8
Fiat	6.4363	-4.5%	-1.7%	7 361.0	7 031.6	4 117.7	13 177.2
Fiat Industrial	10.0814	0.1%	..	10 999.8	11 012.1	1 705.9	8 098.7
Finmeccanica	8.8793	-2.4%	4.6%	5 262.2	5 133.6	603.3	1 609.4
Fondiaria - Sai	5.8982	-14.0%	-6.8%	853.4	734.2	413.0	1 039.7
Generali	15.3296	-6.5%	7.2%	25 514.6	23 866.3	3 339.5	9 303.4
Impregilo	2.3555	2.1%	11.0%	928.7	948.0	168.4	551.5
Intesa Sanpaolo	2.1006	-13.8%	2.9%	28 871.9	24 890.7	8 149.2	22 659.9
Lottomatica	12.7518	24.3%	36.5%	1 764.6	2 193.5	326.7	697.3
Luxottica Group	23.0862	2.6%	0.9%	10 493.4	10 766.8	504.7	1 357.8
Mediaset	4.5142	-2.9%	-0.6%	5 493.1	5 332.3	717.3	2 126.0
Mediobanca	7.2034	-6.1%	7.7%	6 604.7	6 202.9	660.2	1 979.5
Mediolanum	3.8089	2.6%	22.7%	2 720.2	2 791.5	176.9	608.1
Parmalat	2.3666	6.7%	15.0%	3 847.7	4 113.0	2 532.2	3 650.9
Pirelli & C	6.2121	6.9%	2.1%	2 765.4	2 955.4	561.2	1 423.2
Prysmian	15.2171	0.2%	19.5%	3 206.5	3 258.1	755.6	2 173.8
Saipem	37.5835	3.2%	1.8%	16 063.1	16 584.5	1 631.5	5 167.9
Snam Rete Gas	3.9670	0.5%	6.3%	14 090.3	14 165.9	661.3	1 757.4
STMicroelectronics (foreign)	8.8418	-5.1%	12.7%	8 485.9	8 049.8	1 616.2	4 508.3
Telecom Italia	1.0878	-3.0%	12.0%	15 035.6	14 585.3	2 318.8	5 422.0
Tenaris (foreign)	17.3167	5.4%	-5.9%	19 387.6	20 443.0	962.0	3 323.0
Terna	3.3778	1.2%	6.4%	6 691.3	6 787.6	656.5	1 869.4
Tod's	82.9710	11.9%	12.1%	2 270.3	2 539.7	256.3	797.8
Ubi Banca	6.0616	-17.0%	-8.0%	4 670.0	3 874.3	784.2	1 800.1
Unicredit	1.7543	-5.8%	11.7%	35 902.2	33 813.2	19 422.9	50 605.6

### Markets Analysis

Piazza Affari, 6 - 20123 Milano  
 T +39 02 72426.478 | Fax +39 02 8646.4323  
 e-mail: [research@borsaitaliana.it](mailto:research@borsaitaliana.it)  
[www.borsaitaliana.it](http://www.borsaitaliana.it)