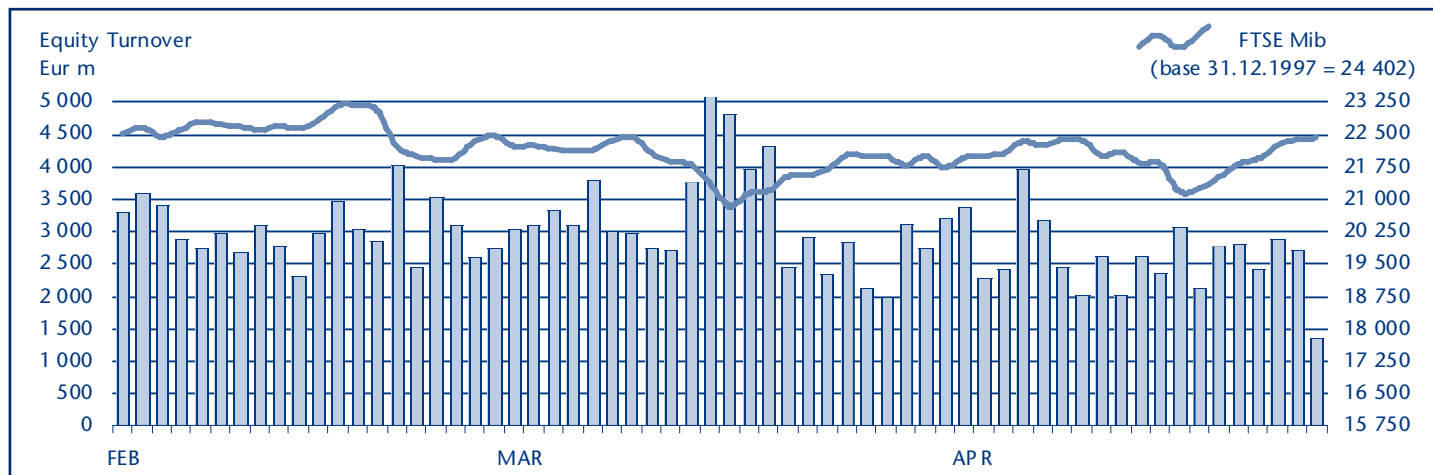


## EQUITY DAILY TURNOVER AND FTSE MIB EVOLUTION



## FTSE MIB SHARES (BASKET UPDATED AS FROM 21.03.2011)

	PRICE (eur)			CAPITALISATION (eur m)		TURNOVER (eur m)	
	29 APR 2011	VAR % MOM	VAR. % 2010 END	31 MAR 2011	29 APR 2011	APR 2011	JAN-APR 2011
A2A	1.2217	6.4%	18.3%	3 598.2	3 827.5	226.2	950.2
Ansaldo Sts	10.4957	1.6%	-1.7%	1 239.5	1 259.5	80.1	490.9
Atlantia	16.5803	2.0%	8.7%	9 755.6	9 953.1	468.5	3 103.1
Autogrill	9.6754	-3.1%	-8.7%	2 539.3	2 461.4	178.7	931.7
Azimut Holding	8.5890	8.9%	26.5%	1 130.0	1 230.4	162.3	712.0
Banca Monte Paschi Siena	0.9175	3.7%	7.6%	4 906.3	5 088.4	537.4	2 198.3
Banca Popolare Milano	2.3175	-13.2%	-12.1%	1 108.4	961.9	480.1	1 917.6
Banco Popolare	2.0042	-5.3%	-19.0%	3 732.4	3 534.3	926.7	6 170.1
Bulgari	12.2801	0.3%	51.7%	3 701.5	3 712.8	115.1	3 043.2
Buzzi Unicem	10.3848	0.5%	20.4%	1 708.2	1 717.1	252.8	1 207.8
Campari	4.8536	1.4%	-1.1%	2 779.7	2 819.0	186.7	707.5
Diasorin	32.6265	5.0%	2.3%	1 730.4	1 817.2	141.1	664.4
Enel	4.8052	7.8%	27.8%	41 911.6	45 184.7	3 360.3	15 981.6
Enel Green Power	2.0053	3.2%	27.1%	9 715.6	10 026.6	525.7	1 717.7
Eni	18.0123	3.4%	9.8%	69 746.6	72 145.7	3 850.9	23 725.7
Exor	24.3515	11.8%	0.5%	3 490.1	3 902.6	346.6	1 726.4
Fiat	7.1747	11.5%	9.6%	7 031.6	7 838.6	3 172.5	16 349.7
Fiat Industrial	10.0301	-0.5%	..	11 012.1	10 956.1	1 093.3	9 192.0
Finmeccanica	9.0765	2.2%	6.9%	5 133.6	5 247.6	361.8	1 971.2
Fondiaria - Sai	6.2744	6.4%	-0.8%	734.2	781.1	193.7	1 233.4
Generali	16.1473	5.3%	12.9%	23 866.3	25 139.3	2 354.1	11 657.5
Impregilo	2.3073	-2.0%	8.8%	948.0	928.6	97.6	649.1
Intesa Sanpaolo	2.2450	6.9%	9.9%	24 890.7	26 601.5	6 316.9	28 976.8
Lottomatica	14.9055	16.9%	59.6%	2 193.5	2 564.0	282.0	979.3
Luxottica Group	22.3988	-3.0%	-2.1%	10 766.8	10 455.4	350.1	1 707.9
Mediaset	4.5022	-0.3%	-0.9%	5 332.3	5 318.1	579.1	2 705.1
Mediobanca	7.7143	7.1%	15.4%	6 202.9	6 643.0	657.7	2 637.2
Mediolanum	3.9538	3.8%	27.4%	2 791.5	2 897.8	156.8	765.0
Parmalat	2.5464	7.6%	23.7%	4 113.0	4 425.5	1 281.6	4 932.5
Pirelli & C	7.0019	12.7%	15.1%	2 955.4	3 331.1	503.7	1 926.9
Prysmian	15.8840	4.4%	24.7%	3 258.1	3 405.0	1 029.8	3 203.7
Saipem	38.4118	2.2%	4.1%	16 584.5	16 950.0	1 162.6	6 330.5
Snam Rete Gas	4.1987	5.8%	12.5%	14 165.9	14 993.8	549.1	2 306.5
STMicroelectronics (foreign)	7.9748	-9.8%	1.7%	8 049.8	7 260.4	1 014.9	5 523.1
Telecom Italia	1.0170	-6.5%	4.7%	14 585.3	13 635.4	2 838.6	8 260.6
Tenaris (foreign)	16.9946	-1.9%	-7.7%	20 443.0	20 062.7	733.0	4 056.0
Terna	3.3788	0.0%	6.5%	6 787.6	6 789.6	490.0	2 359.3
Tod's	92.3621	11.3%	24.8%	2 539.7	2 827.2	259.7	1 057.5
Ubi Banca	6.0528	-0.1%	-8.2%	3 874.3	3 868.6	467.8	2 267.9
Unicredit	1.7360	-1.0%	10.6%	33 813.2	33 460.6	11 768.7	62 374.3

### Markets Analysis

Piazza Affari, 6 - 20123 Milano  
 T +39 02 72426.478 | Fax +39 02 8646.4323  
 e-mail: [research@borsaitaliana.it](mailto:research@borsaitaliana.it)  
[www.borsaitaliana.it](http://www.borsaitaliana.it)