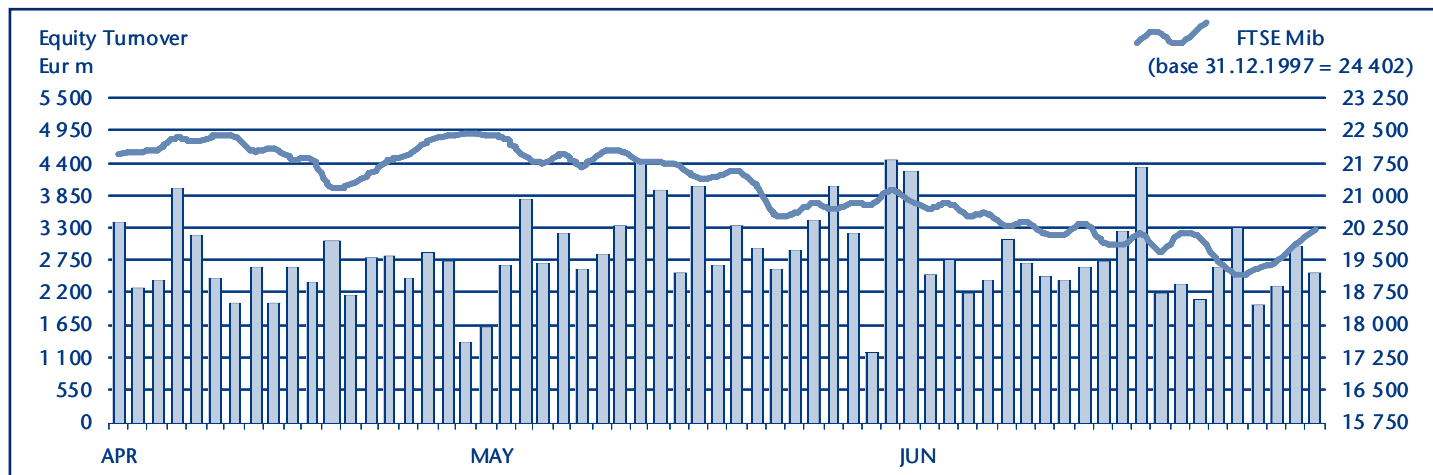


EQUITY DAILY TURNOVER AND FTSE MIB EVOLUTION



FTSE MIB SHARES (BASKET UPDATED AS FROM 20.06.2011)

	PRICE (eur)			CAPITALISATION (eur m)		TURNOVER (eur m)	
	30 JUNE 2011	VAR % MOM	VAR. % 2010 END	31 MAY 2011	30 JUNE 2011	JUNE 2011	JAN-JUNE 2011
A2A	1.0652	-9.4%	3.1%	3 682.8	3 337.1	286.5	1 489.5
Ansaldo Sts	9.6224	-3.0%	-9.9%	1 190.0	1 154.7	109.9	680.8
Atlantia	14.6309	-6.5%	0.7%	9 866.0	9 222.1	715.4	5 263.8
Autogrill	9.0169	1.5%	-14.9%	2 261.1	2 293.9	232.0	1 415.0
Azimut Holding	6.3466	-16.1%	-4.7%	1 083.0	909.2	199.0	1 090.5
Banca Monte Paschi Siena	0.5152	-30.1%	-28.5%	4 834.6	3 100.9	1 278.9	3 826.4
Banca Popolare Milano	1.5945	-16.9%	-39.5%	796.3	661.8	509.7	2 837.7
Banco Popolare	1.5674	-13.2%	-36.7%	3 184.6	2 764.2	796.7	7 797.4
Bulgari	12.1700	0.4%	50.4%	3 666.3	3 679.5	187.7	3 405.6
Buzzi Unicem	9.4995	-1.2%	10.2%	1 590.3	1 570.7	156.5	1 534.8
Campari	5.6194	8.1%	14.5%	3 018.9	3 263.7	221.7	1 212.8
Diasorin	32.8862	-2.0%	3.1%	1 868.8	1 831.7	189.6	1 094.4
Enel	4.4648	-6.3%	18.7%	44 815.3	41 984.4	7 296.0	27 215.9
Enel Green Power	1.8941	-2.7%	20.0%	9 729.3	9 470.7	434.5	2 534.7
Eni	16.1799	-1.8%	-1.3%	65 995.9	64 806.4	8 636.6	45 989.0
Exor	21.4556	-8.4%	-11.5%	3 754.5	3 438.5	230.4	2 333.5
Fiat	7.4691	0.9%	14.1%	8 085.5	8 161.3	3 330.2	23 032.6
Fiat Industrial	8.8637	-3.5%	..	10 037.3	9 682.1	1 033.5	11 528.7
Finmeccanica	8.2975	-3.6%	-2.3%	4 976.0	4 797.2	347.8	3 390.1
Fondiaria - Sai	2.7101	-17.4%	-25.8%	707.5	337.4	233.9	1 587.7
Generali	14.4568	-4.8%	1.1%	23 641.8	22 507.4	2 365.7	16 625.2
Impregilo	2.1449	-3.8%	1.1%	897.6	863.2	137.7	956.6
Intesa Sanpaolo	1.8075	0.3%	-5.6%	21 347.4	28 018.6	7 677.5	45 244.9
Lottomatica	13.2798	-5.0%	42.2%	2 405.5	2 284.3	164.5	1 450.8
Luxottica Group	21.9127	-0.8%	-4.2%	10 315.8	10 228.5	412.6	2 605.5
Mediaset	3.1975	-12.3%	-29.6%	4 307.7	3 776.9	679.5	4 861.3
Mediobanca	6.9242	-10.2%	3.6%	6 641.7	5 962.6	731.5	4 064.9
Mediolanum	3.1608	-13.3%	1.9%	2 673.0	2 318.6	160.8	1 086.9
Parmalat	2.5931	0.4%	26.0%	4 486.8	4 506.6	777.5	7 036.5
Pirelli & C	7.4093	7.3%	21.8%	3 284.9	3 524.9	434.3	2 959.9
Prysmian	13.8162	-5.2%	8.5%	3 123.1	2 961.8	579.0	4 613.6
Saipem	35.3845	-3.0%	-4.1%	16 102.0	15 614.2	1 527.0	10 120.6
Snam Rete Gas	4.0691	-0.6%	9.0%	14 619.1	14 531.4	673.2	4 500.8
STMicroelectronics (foreign)	6.8131	-13.7%	-13.2%	7 186.9	6 203.5	741.8	7 209.4
Telecom Italia	0.9521	-3.4%	-2.0%	13 214.2	12 766.0	1 167.2	10 816.0
Tenaris (foreign)	15.7298	-7.0%	-14.6%	19 972.0	18 569.6	741.4	5 880.1
Terna	3.2033	-5.8%	0.9%	6 833.3	6 438.5	1 065.7	4 095.4
Tod's	91.3508	1.9%	23.4%	2 743.5	2 796.2	261.1	1 781.5
Ubi Banca	3.8478	-24.4%	-37.6%	3 473.7	2 459.3	1 582.6	4 481.6
Unicredit	1.4350	-8.6%	-8.6%	30 265.7	27 658.1	11 665.9	87 305.1

Markets Analysis

Piazza Affari, 6 - 20123 Milano
 T +39 02 72426.478 | Fax +39 02 8646.4323
 e-mail: research@borsaitaliana.it
www.borsaitaliana.it