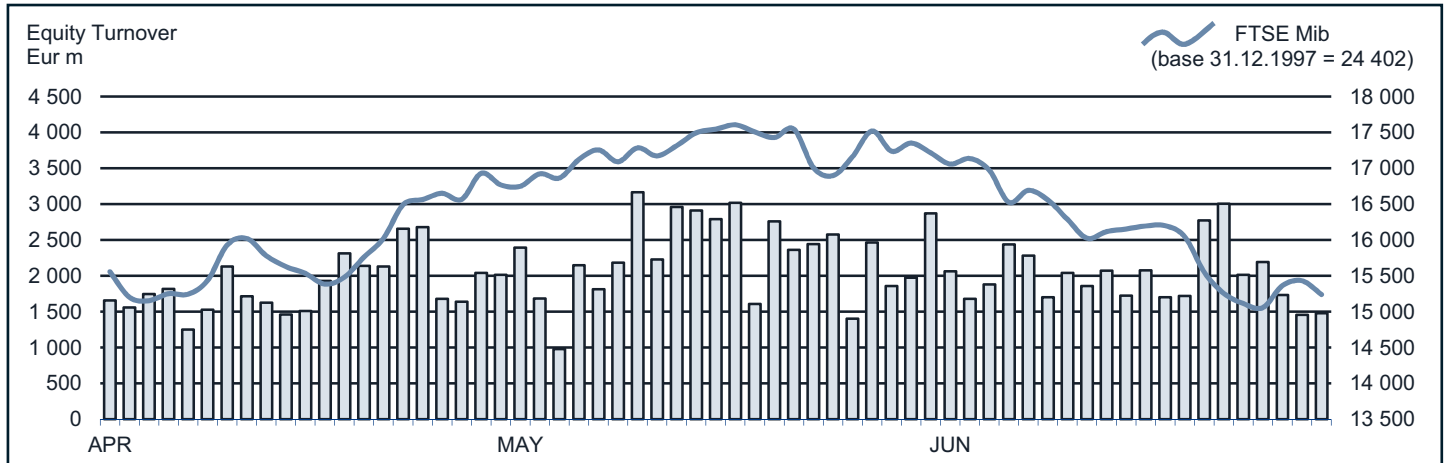




FTSE MIB Statistics

June 2013

EQUITY DAILY TURNOVER AND FTSE MIB EVOLUTION



FTSE MIB SHARES (BASKET UPDATED AS FROM 24.06.2013)

	PRICE (eur)			CAPITALISATION (eur m)		TURNOVER (eur m)	
	28 JUN 2013	VAR % MOM	VAR. % 2012 END	31 MAY 2013	28 JUN 2013	JUN 2013	JAN-JUN 2013
A2A	0.5741	-11.8%	31.5%	2 039.5	1 798.6	196.2	1 763.1
Ansaldo Sts	7.4526	0.3%	5.4%	1 188.9	1 192.4	194.6	1 138.8
Atlantia	12.5263	-4.6%	-8.8%	8 686.0	8 290.3	473.7	3 228.1
Autogrill	10.6270	4.7%	21.9%	2 582.8	2 703.5	201.7	1 413.6
Azimut Holding	13.9418	-4.1%	32.2%	2 083.3	1 997.2	273.1	1 787.9
Banca Monte Paschi Siena	0.1983	-17.5%	-12.0%	2 806.5	2 315.9	847.3	7 838.1
Banca Pop Emilia Romagna	4.4884	-30.9%	-14.3%	2 168.7	1 498.3	312.0	1 710.3
Banca Popolare Milano	0.3091	-28.1%	-32.0%	1 387.9	998.2	395.3	3 890.2
Banco Popolare	0.9173	-20.7%	-26.9%	2 040.4	1 617.9	588.4	4 283.8
Buzzi Unicem	11.6422	-8.8%	10.4%	2 109.6	1 925.0	192.1	1 105.1
Campari	5.5816	-2.3%	-3.8%	3 317.3	3 241.8	155.3	1 029.0
Diasorin	30.9473	1.7%	2.0%	1 700.7	1 730.2	166.1	1 003.4
Enel	2.4259	-17.1%	-23.1%	27 524.9	22 811.5	3 281.8	15 763.8
Enel Green Power	1.5879	-4.1%	12.6%	8 283.0	7 939.4	306.6	1 638.7
Eni	15.8144	-10.8%	-14.3%	64 449.1	57 472.3	5 824.7	36 192.9
Exor	22.8449	-7.4%	20.2%	3 952.5	5 625.1	231.6	1 245.5
Fiat	5.4671	-9.7%	42.9%	7 570.7	6 836.5	2 490.8	12 476.9
Fiat Industrial	8.6035	-3.6%	4.2%	10 915.1	10 518.3	651.7	4 760.7
Finmeccanica	3.9112	-9.1%	-9.9%	2 488.4	2 261.3	358.5	3 169.3
Fondiarria - Sai	1.4072	-9.0%	48.2%	1 424.0	1 295.4	223.3	1 598.6
Generali	13.5031	-6.3%	-2.0%	22 427.0	21 022.6	1 979.6	13 354.1
Gtech	19.0946	-7.1%	10.4%	3 544.0	3 302.1	147.8	1 176.0
Intesa Sanpaolo	1.2356	-14.8%	-5.5%	22 483.1	19 154.0	4 154.9	30 353.2
Luxottica Group	38.8094	-2.5%	24.8%	18 957.4	18 485.1	482.3	3 288.9
Mediaset	2.9019	19.8%	85.7%	2 860.2	3 427.9	523.6	4 085.8
Mediobanca	4.0801	-20.3%	-12.4%	4 410.5	3 513.5	521.7	3 876.8
Mediolanum	4.7918	-7.9%	24.7%	3 823.1	3 520.7	143.0	1 373.3
Parmalat	2.4110	0.8%	37.1%	4 218.0	4 250.7	155.4	706.2
Pirelli & C	8.8846	-0.5%	2.2%	4 247.2	4 226.8	515.5	2 942.5
Prysmian	14.4563	-12.3%	-3.9%	3 535.5	3 102.2	337.4	2 700.1
Saipem	12.5955	-39.5%	-57.2%	9 181.0	5 558.4	1 750.5	10 731.3
Salvatore Ferragamo	23.8170	-1.8%	42.2%	4 084.1	4 011.0	164.0	1 468.7
Snam	3.4774	-5.0%	-1.2%	12 372.7	11 759.2	760.4	5 302.7
STMicroelectronics (foreign)	6.9266	-4.8%	29.6%	6 627.8	6 307.4	615.1	3 618.0
Telecom Italia	0.5371	-11.7%	-21.6%	8 159.9	7 206.0	988.3	8 127.0
Tenaris (foreign)	15.4261	-5.4%	-1.8%	19 241.9	18 211.1	569.7	3 573.2
Terna	3.1779	-6.8%	5.3%	6 854.7	6 387.6	769.8	3 566.0
Tod's	108.2800	-2.3%	12.9%	3 391.2	3 314.4	177.7	1 328.6
Ubi Banca	2.8139	-20.5%	-19.7%	3 190.1	2 537.4	384.7	3 159.4
Unicredit	3.6460	-16.3%	-2.1%	25 220.0	21 107.2	7 365.7	51 914.0

Markets Analysis

Piazza degli Affari, 6 - 20123 Milano
 T +39 02 724261 | Fax +39 02 8646.4323
 e-mail: markets_analysis@borsaitaliana.it
 www.borsaitaliana.it

The publication of this document does not represent solicitation, by Borsa Italiana S.p.A., of public saving and is not to be considered as a recommendation by Borsa Italiana S.p.A. as to the suitability of the investment, if any, herein described.

This document is not to be considered complete and is meant for information and discussion purposes only. Borsa Italiana S.p.A. accepts no liability, arising, without limitation to the generality of the foregoing, from inaccuracies and/or mistakes, for decisions and/or actions taken by any party based on this document. AGREX, BEST VENUE INDICATOR, BORSA ITALIANA and BORSA ITALIANA's logo, BORSA ITALIANA ITALIAN STOCK EXCHANGE, BORSA VIRTUALE, BORSAM@T, CITY FOR GOOD, DDM, ELITE, ETFplus, EUROMOT, EXPANDI, EXTRAMOT, IDEM-THE ITALIAN DERIVATIVES MARKET, IDEX, MARKET CONNECT, MIB, MIB 30, MIBTEL, MIDEX, MINIFIB, MIV, MOT, MTA, MTF, NIS, SEDEX, STAR, STAR SEGMENTO TITOLI CON ALTI REQUISITI, TECHSTAR are registered trademarks owned by Borsa Italiana S.p.A. London Stock Exchange, the coat of arms device and AIM are registered trademarks of London Stock Exchange plc.

FTSE is a trademark of the London Stock Exchange Group companies and is used by FTSE International Limited under licence.

The above trademarks and any other trademark owned by London Stock Exchange Group cannot be used without express written consent by the Company having the ownership on the same.
 © June 2013 Borsa Italiana S.p.A. All rights reserved.

