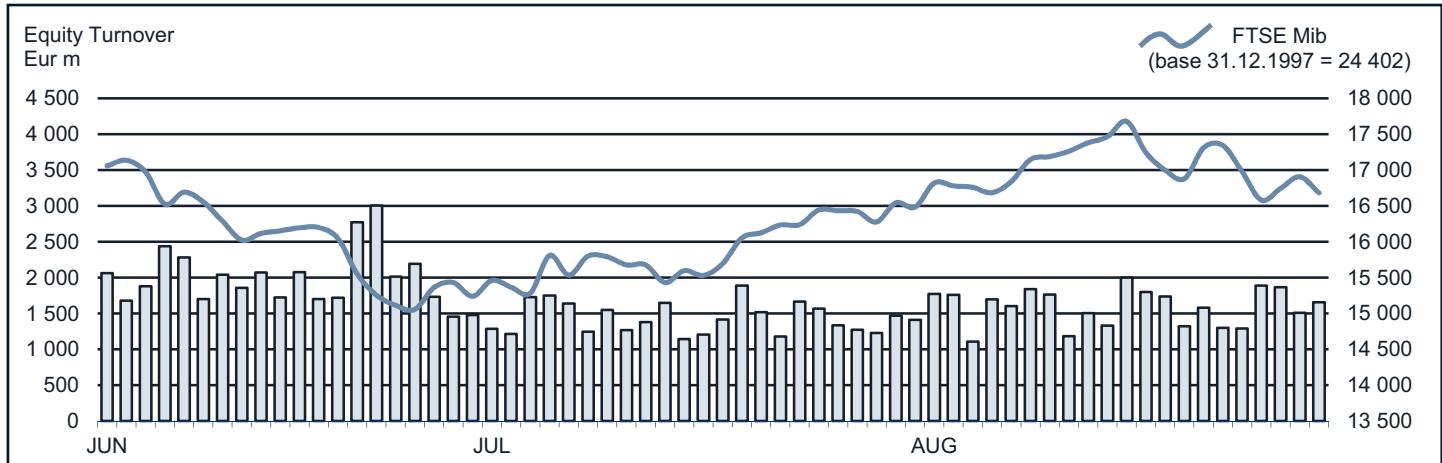




## FTSE MIB Statistics

August 2013

### EQUITY DAILY TURNOVER AND FTSE MIB EVOLUTION



### FTSE MIB SHARES (BASKET UPDATED AS FROM 24.06.2013)

	PRICE (eur)			CAPITALISATION (eur m)		TURNOVER (eur m)	
	30 AUG 2013	VAR % MOM	VAR. % 2012 END	31 JUL 2013	30 AUG 2013	AUG 2013	JAN-AUG 2013
A2A	0.6643	1.5%	52.2%	2 050.8	2 081.2	157.2	2 090.5
Ansaldo Sts	6.5838	-6.6%	4.8%	1 269.1	1 185.1	74.5	1 313.7
Atlantia	13.7437	-3.6%	0.0%	9 433.5	9 095.9	473.5	4 178.1
Autogrill	11.9729	4.9%	37.3%	2 904.1	3 045.9	137.8	1 703.0
Azimut Holding	16.4396	-2.6%	55.9%	2 417.8	2 355.0	233.1	2 270.8
Banca Monte Paschi Siena	0.2207	6.5%	-2.0%	2 422.1	2 578.5	680.7	8 946.7
Banca Pop Emilia Romagna	5.4692	19.9%	4.4%	1 522.5	1 825.8	194.4	2 158.1
Banca Popolare Milano	0.3823	3.4%	-15.9%	1 193.4	1 234.6	297.2	4 599.6
Banco Popolare	1.0910	13.3%	-13.0%	1 698.9	1 924.2	546.0	5 310.3
Buzzi Unicem	10.2595	-7.7%	-2.7%	1 837.3	1 696.4	127.2	1 391.7
Campari	6.0253	3.6%	3.8%	3 378.1	3 499.5	171.9	1 320.1
Diasorin	30.5526	-4.0%	0.7%	1 779.6	1 708.1	93.6	1 220.6
Enel	2.5168	0.2%	-20.3%	23 618.4	23 666.7	1 579.3	19 358.9
Enel Green Power	1.6002	-4.5%	13.5%	8 379.9	8 001.0	191.4	2 058.8
Eni	17.3741	4.9%	-5.9%	60 203.6	63 140.6	4 059.9	44 393.6
Exor	25.9728	4.7%	36.7%	6 107.4	6 395.3	294.8	1 756.5
Fiat	5.7676	-4.1%	50.8%	7 518.5	7 212.4	1 343.6	15 549.8
Fiat Industrial	9.1182	-1.2%	10.4%	11 284.6	11 147.7	628.5	5 987.6
Finmeccanica	3.8750	-1.6%	-10.7%	2 276.4	2 240.3	404.8	3 873.8
Fondiaria - Sai	1.4441	-7.1%	52.0%	1 431.0	1 329.4	225.4	2 049.8
Generali	14.5819	-1.0%	5.9%	22 941.8	22 702.1	1 936.9	17 344.1
Gtech	21.3037	2.0%	23.1%	3 626.9	3 704.9	179.2	1 532.4
Intesa Sanpaolo	1.4991	5.2%	14.7%	22 084.0	23 238.7	4 545.8	38 368.4
Luxottica Group	39.5519	-1.2%	27.2%	19 099.4	18 864.7	315.8	4 098.6
Mediaset	3.1164	-5.9%	99.4%	3 913.2	3 681.2	545.2	5 423.3
Mediobanca	4.7229	3.0%	1.4%	3 950.4	4 067.0	468.2	4 945.1
Mediolanum	5.3272	-6.6%	38.7%	4 189.5	3 919.4	156.9	1 725.4
Parmalat	2.4496	-0.6%	39.3%	4 429.6	4 406.1	187.9	1 001.7
Pirelli & C	8.9977	-9.7%	3.5%	4 738.9	4 280.6	314.7	3 701.1
Prysman	16.8185	8.9%	11.8%	3 315.3	3 609.1	434.7	3 454.4
Saipem	16.7330	3.1%	-43.1%	7 159.0	7 384.2	590.5	12 584.0
Salvatore Ferragamo	25.3651	-1.3%	51.4%	4 328.8	4 271.7	126.0	1 800.8
Snam	3.5398	-0.2%	0.5%	11 994.2	11 970.3	448.6	6 362.1
STMicroelectronics (foreign)	6.1345	-5.3%	14.7%	5 899.5	5 586.7	422.0	4 840.9
Telecom Italia	0.5163	0.3%	-24.6%	6 905.2	6 927.3	965.6	10 226.4
Tenaris (foreign)	16.7480	-1.1%	6.6%	20 000.9	19 771.7	524.0	4 904.6
Terna	3.2269	-3.5%	6.9%	6 720.0	6 486.0	286.6	4 370.4
Tod's	136.3567	11.9%	42.2%	3 730.0	4 173.8	323.7	1 887.1
Ubi Banca	3.6902	15.5%	5.3%	2 881.2	3 327.6	492.3	4 002.2
Unicredit	4.3140	5.6%	15.8%	23 656.9	24 974.6	8 333.8	66 107.9

#### Markets Analysis

Piazza degli Affari, 6 - 20123 Milano  
 T +39 02 724261 | Fax +39 02 8646.4323  
 e-mail: markets\_analysis@borsaitaliana.it  
 www.borsaitaliana.it

The publication of this document does not represent solicitation, by Borsa Italiana S.p.A., of public saving and is not to be considered as a recommendation by Borsa Italiana S.p.A. as to the suitability of the investment, if any, herein described.

This document is not to be considered complete and is meant for information and discussion purposes only. Borsa Italiana S.p.A. accepts no liability, arising, without limitation to the generality of the foregoing, from inaccuracies and/or mistakes, for decisions and/or actions taken by any party based on this document. AGREX, BEST VENUE INDICATOR, BORSA ITALIANA and BORSA ITALIANA's logo, BORSA ITALIANA ITALIAN STOCK EXCHANGE, BORSA VIRTUALE, BORSAM@T, CITY FOR GOOD, DDM, ELITE, ETFplus, EUROMOT, EXPANDI, EXTRAMOT, IDEM-THE ITALIAN DERIVATIVES MARKET, IDEX, MARKET CONNECT, MIB, MIB 30, MIBTEL, MIDEX, MINIFIB, MIV, MOT, MTA, MTF, NIS, SEDEX, STAR, STAR SEGMENTO TITOLI CON ALTI REQUISITI, TECHSTAR are registered trademarks owned by Borsa Italiana S.p.A. London Stock Exchange, the coat of arms device and AIM are registered trademarks of London Stock Exchange plc.

FTSE is a trademark of the London Stock Exchange Group companies and is used by FTSE International Limited under licence.

The above trademarks and any other trademark owned by London Stock Exchange Group cannot be used without express written consent by the Company having the ownership on the same.  
 © August 2013 Borsa Italiana S.p.A.. All rights reserved.

