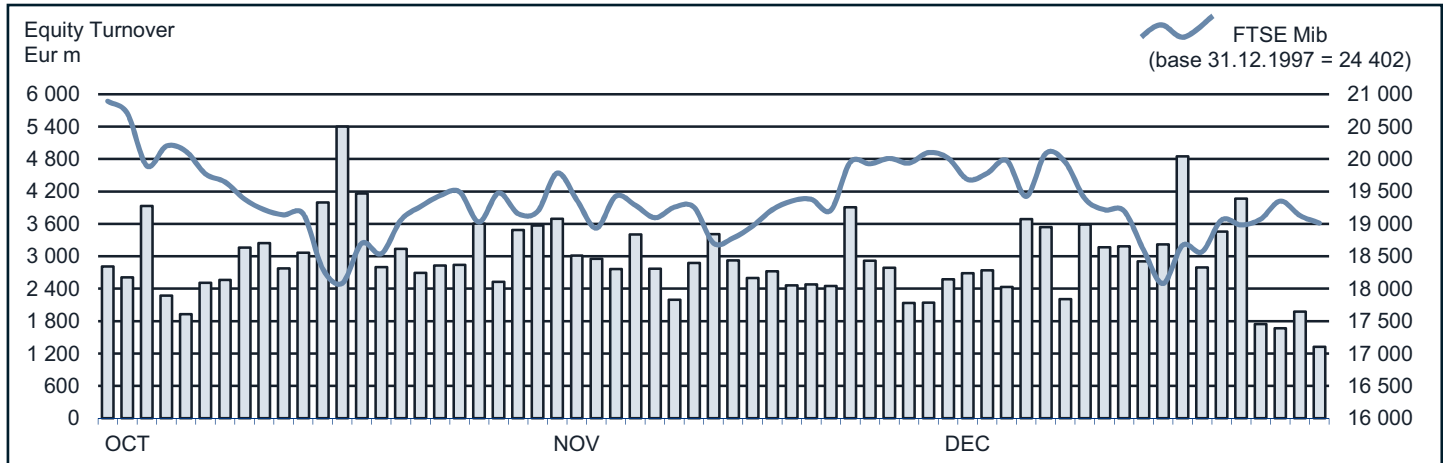




FTSE MIB Statistics

December 2014

EQUITY DAILY TURNOVER AND FTSE MIB EVOLUTION



FTSE MIB SHARES (BASKET UPDATED AS FROM 22.12.2014)

	PRICE (eur)			CAPITALISATION (eur m)		TURNOVER (eur m)	
	30 DEC 2014	VAR % MOM	VAR. % 2013 END	28 NOV 2014	30 DEC 2014	DEC 2014	JAN-DEC 2014
A2A	0.8373	0.0%	-1.7%	2 622.1	2 623.2	233.6	3 403.8
Atlantia	19.3930	-4.0%	19.2%	16 688.8	16 014.4	776.5	11 860.1
Autogrill	6.2581	3.3%	2.6%	1 540.9	1 592.0	239.6	2 687.6
Azimut Holding	18.0291	-2.7%	-6.2%	2 654.6	2 582.7	343.6	5 436.7
Banca Monte Paschi Siena	0.4714	-27.5%	-56.4%	3 327.7	2 412.1	717.6	21 151.9
Banca Pop Emilia Romagna	5.4691	-3.8%	-13.1%	2 735.9	2 632.3	470.4	6 682.0
Banca Popolare Milano	0.5430	-8.4%	35.8%	2 604.0	2 384.9	720.4	13 696.3
Banco Popolare	10.0669	-8.9%	-4.9%	4 003.1	3 646.0	1 003.9	16 572.3
Buzzi Unicem	10.5109	-12.0%	-19.6%	1 974.1	1 738.0	280.7	2 899.9
Campari	5.1483	-8.0%	-15.0%	3 249.2	2 990.1	155.7	2 023.5
CNH Industrial	6.7207	6.0%	-18.8%	8 583.4	9 101.2	641.4	7 899.1
Enel	3.7079	-4.3%	16.9%	36 451.6	34 866.5	3 556.2	42 736.7
Enel Green Power	1.7435	-9.8%	-4.9%	9 665.0	8 717.7	375.7	4 202.0
Eni	14.5681	-9.2%	-16.9%	58 293.3	52 943.0	7 356.6	77 024.4
Exor	34.1175	-4.9%	18.0%	8 831.9	8 400.8	375.2	3 610.1
Fiat Chrysler Automobiles	9.6516	-3.9%	..	12 250.7	12 401.5	4 455.7	9 898.8
Finmeccanica	7.7564	0.0%	40.7%	4 485.0	4 484.4	636.0	8 690.5
Generali	17.0450	-1.7%	-0.4%	27 002.2	26 536.9	2 459.7	29 870.2
Gtech	18.4904	0.1%	-16.6%	3 231.3	3 235.4	167.6	2 736.7
Intesa Sanpaolo	2.4375	-1.3%	35.8%	38 309.9	38 625.4	9 259.4	93 545.6
Luxottica Group	45.3468	5.8%	16.5%	20 633.4	21 840.4	666.8	7 727.9
Mediaset	3.4552	6.6%	-0.7%	3 827.7	4 081.4	671.2	9 626.4
Mediobanca	6.7466	-6.2%	6.0%	6 195.2	5 826.9	722.8	10 235.2
Mediolanum	5.2859	-5.5%	-16.3%	4 123.1	3 898.0	210.3	3 742.8
Moncler	11.0457	-7.1%	-28.5%	2 971.2	2 761.4	183.6	2 570.2
Pirelli & C	11.1833	-1.9%	-11.2%	5 421.1	5 320.4	481.7	8 088.5
Prismian	15.1638	5.5%	-18.9%	3 111.6	3 286.2	413.6	5 838.2
Saipem	8.7748	-24.5%	-43.5%	5 131.8	3 872.3	2 159.2	14 159.2
Salvatore Ferragamo	20.3804	-7.0%	-26.2%	3 689.3	3 432.3	214.6	3 323.3
Snam	4.1141	-3.2%	1.9%	14 372.9	13 912.5	803.4	10 877.9
STMicroelectronics (foreign)	6.1878	2.8%	6.9%	5 481.6	5 635.5	478.7	8 567.1
Telecom Italia	0.8859	-2.3%	22.9%	12 211.4	11 933.7	1 776.9	25 021.5
Tenaris (foreign)	12.3577	-7.7%	-22.5%	15 801.9	14 588.7	852.4	9 227.9
Terna	3.7831	-2.6%	4.1%	7 809.4	7 603.9	681.0	8 230.0
Tod's	71.9056	-2.3%	-40.6%	2 253.0	2 201.0	227.0	3 527.5
Ubi Banca	5.9670	-3.3%	21.2%	5 561.7	5 380.8	1 017.5	14 171.2
Unicredit	5.3531	-10.0%	-0.6%	34 873.9	31 386.9	8 603.5	112 848.3
Unipolsai	2.2466	-2.7%	-0.4%	5 254.7	5 112.4	288.6	5 984.9
World Duty Free	7.9370	2.3%	-13.2%	1 975.1	2 020.1	242.6	2 827.9
Yoox	18.4858	-2.7%	-43.0%	1 172.3	1 144.9	322.7	5 112.3

Markets Analysis  
 Piazza degli Affari, 6 - 20123 Milano  
 T +39 02 724261 | Fax +39 02 8646.4323  
 e-mail: markets\_analysis@borsaitaliana.it  
 www.borsaitaliana.it

This document contains text, data, graphics, photographs, illustrations, artwork, names, logos, trade marks, service marks and information ("Information") connected with Borsa Italiana S.p.A. ("Borsa Italiana").

All reasonable efforts have been made to ensure that the Information in this document was correct at the time of publication. However, Borsa Italiana Spa accepts no liability for decisions taken, or systems-related or other work carried out by any party based on this document.

The publication of this document does not represent solicitation, by Borsa Italiana, of public saving and is not to be considered as a recommendation by Borsa Italiana as to the suitability of the investment, if any, herein described.

