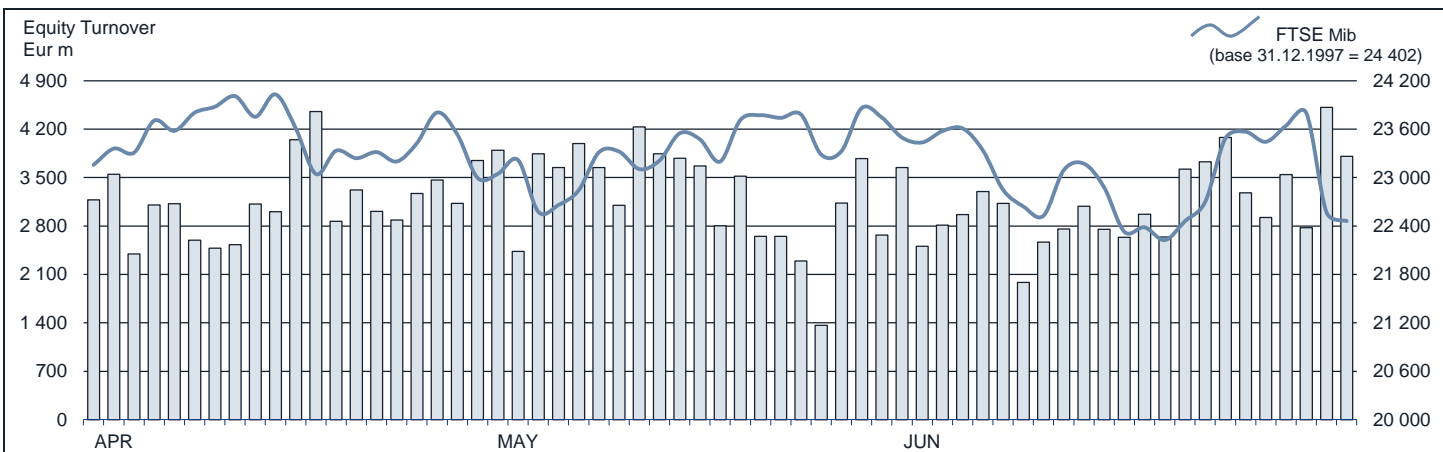


FTSE MIB Statistics
JUNE 2015
EQUITY DAILY TURNOVER AND FTSE MIB EVOLUTION

FTSE MIB SHARES (BASKET UPDATED AS FROM 22.06.2015)

	PRICE (eur)			CAPITALISATION (eur m)		TURNOVER (eur m)	
	30 JUN 2015	VAR. % MOM	VAR. % 2014 END	29 MAY 2015	30 JUN 2015	JUN 2015	JAN-JUN 2015
A2A	1.0784	-4.7%	28.8%	3 545.9	3 378.5	468.4	2 516.6
ANSALDO STS	9.3535	-0.7%	11.9%	1 883.4	1 870.7	400.9	1 848.5
ATLANTIA	22.1808	-5.9%	14.4%	19 474.1	18 316.6	1 093.3	6 726.2
AUTOGRILL	7.5511	-10.7%	20.7%	2 151.8	1 921.0	344.3	2 002.9
AZIMUT HOLDING	26.2292	0.1%	48.9%	3 752.8	3 757.5	1 008.1	4 475.5
BANCA MONTE PASCHI SIENA	1.7616	-4.1%	-8.2%	470.0	4 957.2	2 724.7	9 857.4
BANCA POP EMILIA ROMAGNA	8.0226	1.8%	46.7%	3 792.8	3 861.3	649.3	5 298.8
BANCA POPOLARE MILANO	0.9414	-0.5%	73.3%	4 154.6	4 134.3	1 416.9	9 803.4
BANCO POPOLARE	14.8062	-4.4%	47.1%	5 610.0	5 362.5	1 244.7	7 691.2
BUZZI UNICEM	12.7769	-9.0%	21.6%	2 320.7	2 112.7	352.6	2 148.6
CAMPARI	6.8709	-1.9%	33.5%	4 067.9	3 990.6	351.4	1 772.5
CNH INDUSTRIAL	8.1963	0.8%	22.0%	11 064.3	11 151.0	772.6	4 350.4
ENEL	4.1020	-7.8%	10.6%	41 854.0	38 572.6	6 807.2	28 393.7
ENEL GREEN POWER	1.7661	2.2%	1.3%	8 642.4	8 830.7	530.9	2 521.8
ENI	16.0232	-3.1%	10.0%	60 081.0	58 231.2	6 044.9	41 943.1
EXOR	43.0638	-5.1%	26.2%	11 176.6	10 603.6	569.4	2 685.8
FIAT CHRYSLER AUTOMOBILES	13.1794	-10.1%	36.6%	18 839.5	16 934.5	3 690.9	27 355.9
FINMECCANICA	11.3005	-7.4%	45.7%	7 059.2	6 533.4	961.6	5 359.5
GENERALI	16.2681	-8.5%	-4.6%	27 670.5	25 327.4	3 220.0	19 168.1
INTESA SANPAOLO	3.2825	-1.2%	34.7%	52 662.7	52 014.7	9 157.1	53 952.1
LUXOTTICA GROUP	60.0182	-2.0%	34.0%	29 524.0	28 961.3	1 028.1	5 414.4
MEDIASET	4.3294	-2.6%	25.3%	5 249.5	5 114.0	823.3	6 540.3
MEDIOBANCA	8.8215	-6.2%	30.8%	8 141.4	7 649.7	874.5	5 074.6
MEDIOLANUM	7.4221	-5.2%	40.4%	5 772.7	5 478.1	444.2	2 232.8
MONCLER	16.5969	-4.6%	50.3%	4 352.0	4 151.2	375.3	2 595.6
PIRELLI & C	15.1992	-1.8%	35.9%	7 361.5	7 230.8	678.5	5 867.9
PRYSMIAN	19.5366	-4.9%	28.8%	4 452.7	4 234.0	599.0	3 578.0
SAIPEM	9.5197	-18.1%	8.5%	5 126.8	4 201.1	1 706.9	10 655.7
SALVATORE FERRAGAMO	27.2081	-5.8%	33.5%	4 866.7	4 592.5	288.8	2 333.2
SNAM	4.3050	-4.5%	4.6%	15 784.4	15 070.1	1 275.7	7 421.9
STMICROELECTRONICS	7.3616	-5.2%	19.0%	7 074.3	6 704.5	720.2	5 288.7
TELECOM ITALIA	1.1339	1.1%	28.0%	15 109.8	15 275.0	3 434.1	15 054.4
TENARIS	12.1029	-8.2%	-2.1%	15 561.1	14 287.9	809.8	5 949.7
TERNA	4.0031	-7.9%	5.8%	8 735.7	8 046.1	1 145.9	4 453.3
TOD'S	84.9519	0.6%	18.1%	2 583.8	2 600.3	323.5	2 110.1
UBI BANCA	7.2351	-4.0%	21.3%	6 795.5	6 524.2	1 455.1	7 899.0
UNICREDIT	6.0807	-5.2%	13.6%	37 728.5	36 284.8	9 283.5	52 705.8
UNIPOLSAI	2.2322	-10.0%	-0.6%	5 641.6	6 206.8	555.3	3 066.7
WORLD DUTY FREE	10.0678	-0.4%	26.8%	2 571.5	2 562.4	240.9	2 977.0
YOOX	29.1359	-3.2%	57.6%	1 868.8	1 809.3	496.7	4 223.9

Markets Analysis
 Piazza degli Affari, 6 - 20123 Milano
 T +39 02 724261 | Fax +39 02 8646.4323
 e-mail: markets_analysis@borsaitaliana.it
 www.borsaitaliana.it

This document contains text, data, graphics, photographs, illustrations, artwork, names, logos, trade marks, service marks and information ("Information") connected with Borsa Italiana S.p.A. ("Borsa Italiana").

All reasonable efforts have been made to ensure that the Information in this document was correct at the time of publication. However, Borsa Italiana Spa accepts no liability for decisions taken, or systems-related or other work carried out by any party based on this document. The publication of this document does not represent solicitation, by Borsa Italiana, of public saving and is not to be considered as a recommendation by Borsa Italiana as to the suitability of the investment, if any, herein described.

© June 2015 Borsa Italiana S.p.A. All rights reserved.