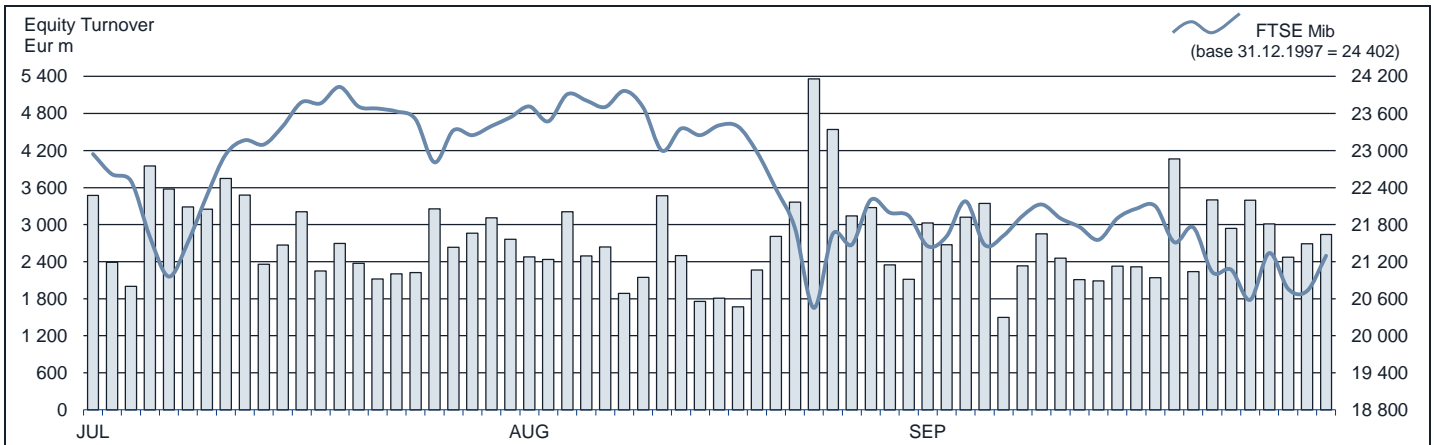




FTSE MIB Statistics

SEPTEMBER 2015

EQUITY DAILY TURNOVER AND FTSE MIB EVOLUTION



FTSE MIB SHARES (BASKET UPDATED AS FROM 21.09.2015)

	PRICE (eur)			CAPITALISATION (eur m)		TURNOVER (eur m)	
	30 SEP 2015	VAR. % MOM	VAR. % 2014 END	31 AUG 2015	30 SEP 2015	SEP 2015	JAN-SEP 2015
A2A	1.1021	0.4%	31.6%	3 439.1	3 452.7	326.5	3 510.8
ANSALDO STS	9.4915	0.2%	13.6%	1 895.0	1 898.3	227.4	2 673.8
ATLANTIA	24.9670	4.6%	28.7%	19 708.3	20 617.4	1 254.4	10 127.6
AZIMUT HOLDING	19.0612	-3.3%	8.2%	2 822.7	2 730.6	599.7	7 169.1
BANCA MONTE PASCHI SIENA	1.5752	-15.9%	-17.9%	5 489.2	4 618.5	2 545.1	17 207.5
BANCA POP EMILIA ROMAGNA	7.4016	-3.1%	35.3%	3 678.3	3 562.5	490.6	7 127.6
BANCA POPOLARE MILANO	0.8944	-5.3%	64.7%	4 145.7	3 927.9	811.2	12 996.3
BANCO POPOLARE	13.2853	-13.4%	32.0%	5 556.1	4 811.6	820.1	10 574.0
BUZZI UNICEM	14.8416	-1.5%	41.2%	2 490.7	2 454.0	366.9	3 428.7
CAMPARI	7.1135	7.2%	38.2%	3 855.1	4 131.5	257.5	2 468.6
CNH INDUSTRIAL	5.7847	-18.0%	-13.9%	9 597.9	7 873.7	609.6	6 329.6
ENEL	3.9663	-1.1%	7.0%	37 707.1	37 296.1	3 975.6	40 515.4
ENEL GREEN POWER	1.6796	-1.1%	-3.7%	8 489.5	8 397.9	359.9	3 704.2
ENI	14.0092	-4.9%	-3.8%	53 530.7	50 912.2	8 956.0	63 068.0
EXOR	38.5484	-6.2%	13.0%	10 114.9	9 491.8	507.3	4 133.1
FIAT CHRYSLER AUTOMOBILES	11.4991	-8.4%	19.1%	16 126.7	14 775.4	4 569.2	40 871.3
FINMECCANICA	11.1648	-6.9%	43.9%	6 932.6	6 454.9	806.1	7 783.6
GENERALI	16.3300	0.2%	-4.2%	25 381.6	25 423.8	2 449.4	27 226.7
INTESA SANPAOLO	3.1424	-2.9%	28.9%	51 321.7	49 824.6	7 552.8	78 542.2
LUXOTTICA GROUP	61.6505	2.2%	37.7%	29 158.0	29 802.9	899.9	8 487.8
MEDIASET	4.0711	-4.3%	17.8%	5 027.0	4 808.9	638.6	8 990.8
MEDIOBANCA	8.8055	-1.6%	30.5%	7 765.3	7 637.7	723.8	7 936.8
MEDIOLANUM	6.3953	-9.1%	21.0%	5 198.3	4 724.8	239.2	3 374.8
MONCLER	16.0371	0.4%	45.2%	3 993.7	4 011.3	322.0	3 720.5
PIRELLI & C	14.9706	0.2%	33.9%	7 105.1	7 122.1	1 138.9	8 558.2
PRYSMIAN	18.4250	-3.8%	21.5%	4 152.0	3 993.1	591.4	5 581.8
SAIPEM	7.1204	-15.6%	-18.9%	3 721.2	3 142.2	790.9	13 458.3
SALVATORE FERRAGAMO	23.6610	-2.6%	16.1%	4 099.4	3 993.7	363.9	3 620.0
SNAM	4.5579	4.5%	10.8%	15 267.2	15 955.5	1 164.9	10 920.4
STMICROELECTRONICS	6.0256	-6.6%	-2.6%	5 879.7	5 489.0	704.4	7 768.3
TELECOM ITALIA	1.0972	0.8%	23.8%	14 681.9	14 798.6	3 138.8	24 005.4
TENARIS	10.7480	-5.9%	-13.0%	13 481.0	12 688.4	921.1	9 050.2
TERNA	4.3267	4.3%	14.4%	8 339.7	8 696.7	659.9	6 507.1
TOD'S	78.9114	-3.1%	9.7%	2 493.4	2 415.4	296.6	3 251.7
UBI BANCA	6.3587	-8.9%	6.6%	6 292.4	5 733.9	1 068.6	11 304.2
UNICREDIT	5.5386	-4.7%	3.5%	34 679.2	33 049.9	7 000.0	75 736.0
UNIPOL	3.9482	-5.8%	-4.0%	3 006.6	2 832.8	280.8	2 032.3
UNIPOLSAI	1.9497	-5.0%	-13.2%	5 705.1	5 421.1	342.2	4 431.0
WORLD DUTY FREE	10.2296	0.0%	28.9%	2 602.7	2 603.6	110.4	3 532.1
YOOX	26.8534	-4.3%	45.3%	1 744.3	1 668.5	390.0	5 525.8

Markets Analysis
 Piazza degli Affari, 6 - 20123 Milano
 T +39 02 724261 | Fax +39 02 8646.4323
 e-mail: markets_analysis@borsaitaliana.it
 www.borsaitaliana.it

This document contains text, data, graphics, photographs, illustrations, artwork, names, logos, trade marks, service marks and information ("Information") connected with Borsa Italiana S.p.A. ("Borsa Italiana"). All reasonable efforts have been made to ensure that the Information in this document was correct at the time of publication. However, Borsa Italiana Spa accepts no liability for decisions taken, or systems-related or other work carried out by any party based on this document. The publication of this document does not represent solicitation, by Borsa Italiana, of public saving and is not to be considered as a recommendation by Borsa Italiana as to the suitability of the investment, if any, herein described.

© September 2015 Borsa Italiana S.p.A. All rights reserved.

