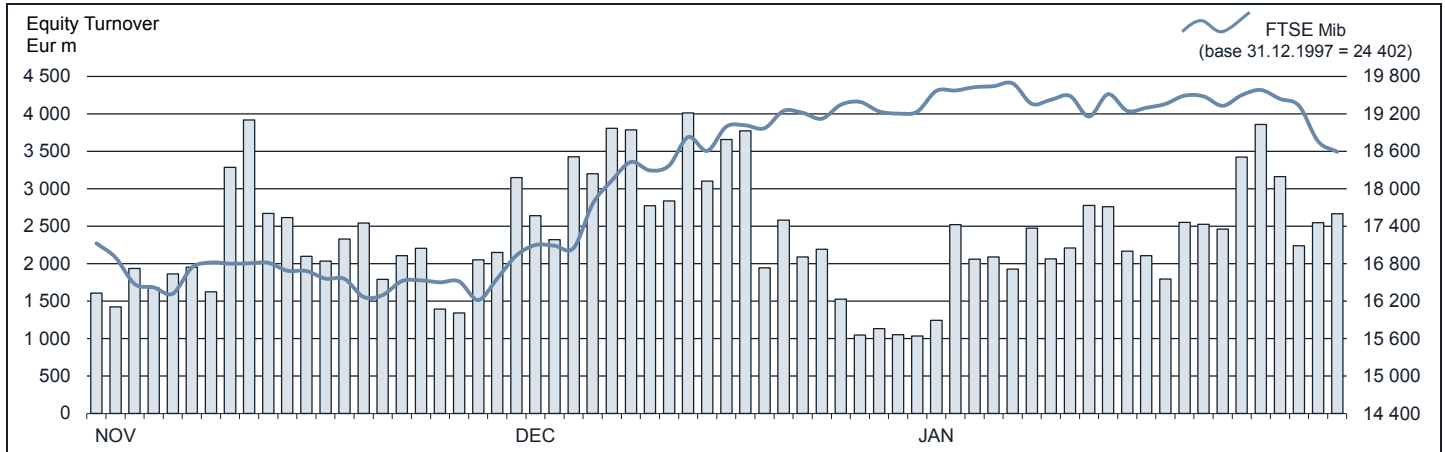




FTSE MIB Statistics

January 2017

EQUITY DAILY TURNOVER AND FTSE MIB EVOLUTION



FTSE MIB SHARES (BASKET UPDATED AS FROM 23.01.2017)

	PRICE (eur)		CAPITALISATION (eur m)		TURNOVER (eur m)	
	31 JAN 2017	VAR. % MOM	30 DEC 2016	31 JAN 2017	DEC 2016	JAN 2017
A2A	1.2365	0.7%	3 847.5	3 873.8	236.3	301.3
ATLANTIA	21.0509	-5.7%	18 427.1	17 383.5	1 193.8	981.0
AZIMUT HOLDING	16.8081	6.0%	2 271.0	2 407.8	426.4	550.0
BANCA MEDIOLANUM	7.0633	3.0%	5 067.5	5 221.5	206.1	250.0
BANCA MONTE PASCHI SIENA	637.1	0
BANCO BPM	2.7032	4 095.8	..	2 321.9
BPER BANCA	5.3466	5.1%	2 447.9	2 573.4	719.9	617.8
BREMBO	59.8236	3.8%	3 849.1	3 995.3	203.0	201.1
BUZZI UNICEM	23.0094	1.7%	3 740.1	3 804.6	407.0	405.2
CAMPARI	9.3112	-0.1%	5 413.4	5 407.9	218.7	204.7
CNH INDUSTRIAL	8.3532	1.3%	11 237.7	11 384.6	654.5	671.1
ENEL	3.8654	-7.3%	42 402.3	39 298.3	3 804.1	3 541.3
ENI	14.3560	-7.0%	56 080.5	52 172.4	5 530.4	4 424.6
EXOR	42.3910	3.5%	9 869.7	10 216.2	216.9	560.2
FERRARI	57.8270	4.5%	10 731.8	11 214.0	574.8	598.1
FIAT CHRYSLER AUTOMOBILES	10.1769	17.1%	11 164.3	13 076.5	3 282.4	6 446.0
FINCOBANK	5.5360	3.3%	3 252.6	3 359.3	324.9	279.6
GENERALI	14.8616	4.8%	22 119.8	23 182.4	3 646.4	4 330.7
INTESA SANPAOLO	2.1838	-9.5%	38 288.1	34 634.8	6 812.1	6 309.3
ITALGAS	3.5195	-5.7%	3 019.2	2 847.8	347.4	234.4
LEONARDO	11.9378	-10.0%	7 669.5	6 901.8	671.6	581.9
LUXOTTICA GROUP	49.9415	-2.6%	24 832.4	24 180.5	739.0	1 508.0
MEDIASET	3.9802	-3.3%	4 861.4	4 701.5	2 790.0	981.0
MEDIOBANCA	8.0458	3.3%	6 797.0	7 024.3	965.3	1 067.6
MONCLER	17.9308	8.6%	4 131.0	4 486.7	383.9	391.9
POSTE ITALIANE	5.8533	-7.4%	8 260.2	7 645.1	410.8	355.4
PRYSMIAN	24.1928	-1.0%	5 295.8	5 243.1	421.0	518.8
RECORDATI	26.5197	-1.5%	5 628.0	5 545.9	258.1	227.8
SAIPEM	0.4741	-11.5%	5 414.4	4 793.3	955.5	1 035.7
SALVATORE FERRAGAMO	24.6315	9.0%	3 813.6	4 157.5	218.1	461.6
SNAM	3.5311	-10.0%	13 731.5	12 361.1	1 013.7	863.2
STMICROELECTRONICS	12.2985	14.1%	9 818.0	11 204.3	780.2	1 217.9
TELECOM ITALIA	0.7944	-5.5%	12 780.6	12 077.1	1 839.1	1 538.5
TENARIS	16.1179	-5.2%	20 068.8	19 027.7	1 037.9	775.4
TERNA	4.0670	-6.8%	8 768.6	8 174.7	779.2	658.5
UBI BANCA	3.2453	24.5%	2 545.3	3 168.4	924.8	1 526.7
UNICREDIT	25.7858	-5.7%	16 897.5	15 930.0	7 101.5	5 626.2
UNIPOL	3.4463	0.8%	2 453.1	2 472.6	307.9	297.0
UNIPOLSAI	1.9501	-4.4%	5 772.2	5 518.2	358.3	324.7
YOOX NET-A-PORTER GROUP	23.5513	-12.9%	2 455.2	2 141.1	190.5	444.1

* Banca Monte Paschi Siena suspended on 23.12.2016

Markets Analysis
 Piazza degli Affari, 6 - 20123 Milano
 T +39 02 724261 | Fax +39 02 8646.4323
 e-mail: markets_analysis@borsaitaliana.it
 www.borsaitaliana.it

This document contains text, data, graphics, photographs, illustrations, artwork, names, logos, trade marks, service marks and information ("Information") connected with Borsa Italiana S.p.A. ("Borsa Italiana"). All reasonable efforts have been made to ensure that the Information in this document was correct at the time of publication. However, Borsa Italiana Spa accepts no liability for decisions taken, or systems-related or other work carried out by any party based on this document. The publication of this document does not represent solicitation, by Borsa Italiana, of public saving and is not to be considered as a recommendation by Borsa Italiana as to the suitability of the investment, if any, herein described.

© January 2017 Borsa Italiana S.p.A. All rights reserved.