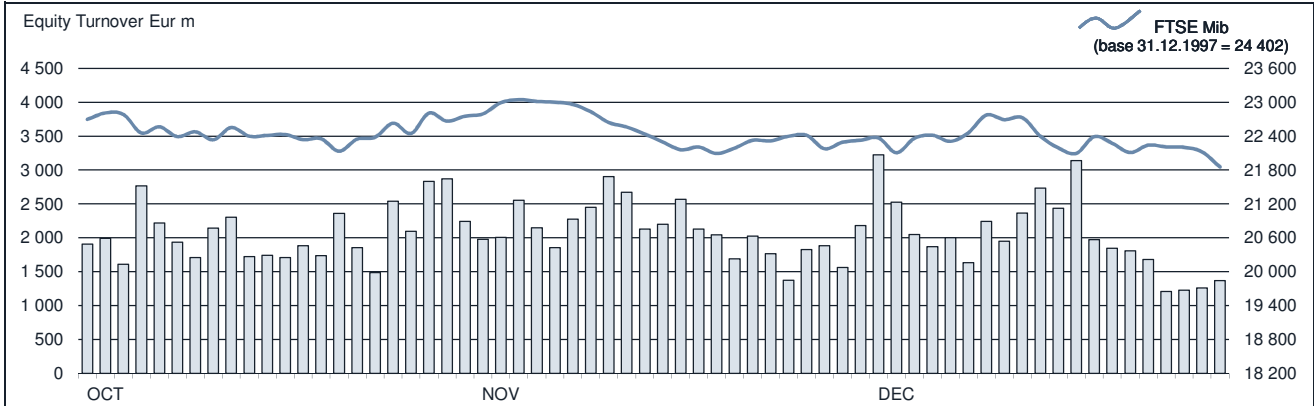




FTSE MIB Statistics

December 2017

EQUITY DAILY TURNOVER AND FTSE MIB EVOLUTION



FTSE MIB SHARES (BASKET UPDATED AS FROM 18.12.2017)

|                           | PRICE (eur) |            |                 | CAPITALISATION (eur m) |             | TURNOVER (eur m) |              |
|---------------------------|-------------|------------|-----------------|------------------------|-------------|------------------|--------------|
|                           | 29 DEC 2017 | VAR. % MOM | VAR. % 2016 END | 30 NOV 2017            | 29 DEC 2017 | DEC 2017         | JAN-DEC 2017 |
| A2A                       | 1.5398      | -2.6%      | 25.4%           | 4 952.7                | 4 824.2     | 249.4            | 3 517.0      |
| ATLANTIA                  | 26.4336     | -5.5%      | 18.5%           | 23 099.7               | 21 828.4    | 779.2            | 13 525.2     |
| AZIMUT HOLDING            | 15.9677     | -0.1%      | 0.7%            | 2 290.5                | 2 287.4     | 240.4            | 5 140.2      |
| BANCA GENERALI            | 27.9147     | -5.6%      | 23.2%           | 3 457.0                | 3 261.9     | 118.5            | 2 341.3      |
| BANCO BPM                 | 2.6318      | -8.8%      | ..              | 4 372.2                | 3 987.7     | 1 333.9          | 19 713.2     |
| BPER BANCA                | 4.2334      | -7.5%      | -16.8%          | 2 202.3                | 2 037.6     | 478.6            | 6 430.0      |
| BREMBO                    | 12.7433     | -2.0%      | 10.6%           | 4 343.3                | 4 255.3     | 126.6            | 2 777.9      |
| BUZZI UNICEM              | 22.5909     | 0.8%       | -0.1%           | 3 705.3                | 3 735.4     | 239.6            | 4 207.8      |
| CAMPARI                   | 6.4567      | -1.3%      | 38.5%           | 7 598.4                | 7 500.1     | 248.3            | 3 363.2      |
| CNH INDUSTRIAL            | 11.1750     | 3.1%       | 35.5%           | 14 793.4               | 15 247.2    | 559.5            | 7 816.5      |
| ENEL                      | 5.1552      | -6.1%      | 23.6%           | 55 813.6               | 52 411.1    | 2 790.2          | 37 050.9     |
| ENI                       | 13.8642     | 0.1%       | -10.2%          | 50 350.7               | 50 385.2    | 3 201.6          | 50 375.5     |
| EXOR                      | 51.0409     | -0.3%      | 24.6%           | 12 339.5               | 12 300.8    | 331.1            | 5 224.8      |
| FERRARI                   | 88.0267     | -3.8%      | 59.1%           | 17 753.3               | 17 070.5    | 712.9            | 13 226.9     |
| FIAT CHRYSLER AUTOMOBILES | 15.0163     | 3.9%       | 73.5%           | 22 219.2               | 23 126.5    | 2 320.7          | 45 314.6     |
| FINCOBANK                 | 8.5825      | 1.6%       | 60.1%           | 5 134.0                | 5 215.7     | 284.7            | 3 504.1      |
| GENERALI                  | 15.2126     | -0.9%      | 7.3%            | 23 983.5               | 23 759.2    | 1 441.1          | 27 114.0     |
| INTESA SANPAOLO           | 2.7703      | -2.3%      | 14.8%           | 44 961.4               | 43 935.9    | 4 490.8          | 71 806.6     |
| ITALGAS                   | 5.1086      | -3.6%      | 36.9%           | 4 287.7                | 4 133.5     | 243.3            | 2 657.5      |
| LEONARDO                  | 9.9304      | -0.7%      | -25.1%          | 5 780.0                | 5 741.3     | 734.3            | 8 525.5      |
| LUXOTTICA GROUP           | 51.2759     | 5.1%       | 0.0%            | 23 665.2               | 24 868.9    | 556.5            | 7 459.8      |
| MEDIASET                  | 3.2389      | 1.6%       | -21.3%          | 3 764.3                | 3 825.8     | 265.4            | 4 640.3      |
| MEDIOBANCA                | 9.4750      | -1.8%      | 21.7%           | 8 506.4                | 8 375.8     | 514.1            | 9 199.2      |
| MONCLER                   | 26.2306     | 13.6%      | 58.9%           | 5 883.5                | 6 681.1     | 424.9            | 5 102.8      |
| PIRELLI & C               | 7.2383      | 3.0%       | ..              | 7 025.5                | 7 238.3     | 304.1            | 1 713.6      |
| POSTE ITALIANE            | 6.2958      | 2.7%       | -0.4%           | 8 006.7                | 8 223.0     | 396.6            | 4 987.1      |
| PRYSMIAN                  | 27.2865     | -2.3%      | 11.7%           | 6 055.0                | 5 934.3     | 511.5            | 6 522.3      |
| RECORDATI                 | 37.2009     | -1.6%      | 38.2%           | 7 904.7                | 7 779.6     | 234.7            | 4 125.8      |
| SAIPEM                    | 3.8279      | 13.0%      | -28.5%          | 3 423.7                | 3 869.9     | 711.1            | 9 154.6      |
| SALVATORE FERRAGAMO       | 22.1667     | -3.2%      | -1.9%           | 3 863.6                | 3 741.5     | 251.8            | 3 907.4      |
| SNAM                      | 4.0859      | -3.7%      | 4.2%            | 14 847.7               | 14 303.3    | 759.0            | 9 819.1      |
| STMICROELECTRONICS        | 18.3359     | -3.6%      | 70.1%           | 17 324.6               | 16 706.0    | 1 496.2          | 19 082.7     |
| TELECOM ITALIA            | 0.7239      | 2.5%       | -13.9%          | 10 741.7               | 11 005.1    | 1 281.8          | 17 763.3     |
| TENARIS                   | 13.1862     | 7.5%       | -22.4%          | 14 482.7               | 15 566.8    | 941.1            | 11 360.1     |
| TERNA                     | 4.8766      | -6.1%      | 11.8%           | 10 437.6               | 9 801.9     | 580.1            | 7 423.7      |
| UBI BANCA                 | 3.6806      | -9.5%      | 48.1%           | 4 654.1                | 4 211.7     | 783.0            | 12 518.9     |
| UNICREDIT                 | 15.6955     | -8.1%      | 14.5%           | 38 030.6               | 34 933.3    | 5 663.1          | 74 593.7     |
| UNIPOL                    | 3.9265      | 2.3%       | 14.8%           | 2 755.2                | 2 817.2     | 155.4            | 2 827.9      |
| UNIPOLSAI                 | 1.9554      | -0.4%      | -4.1%           | 5 553.1                | 5 533.2     | 249.1            | 3 409.7      |
| YOOX NET-A-PORTER GROUP   | 29.4489     | 6.9%       | 9.0%            | 2 511.7                | 2 684.7     | 375.5            | 5 367.0      |

Markets Analysis  
 Piazza degli Affari, 6 - 20123 Milano  
 T +39 02 724261 | Fax +39 02 8646.4323  
 e-mail: markets\_analysis@borsaitaliana.it  
 www.borsaitaliana.it

This document contains text, data, graphics, photographs, illustrations, artwork, names, logos, trade marks, service marks and information ("Information") connected with Borsa Italiana S.p.A. ("Borsa Italiana"). All reasonable efforts have been made to ensure that the information in this document was correct at the time of publication. However, Borsa Italiana Spa accepts no liability for decisions taken, or systems-related or other work carried out by any party based on this document. The publication of this document does not represent solicitation, by Borsa Italiana, of public saving and is not to be considered as a recommendation by Borsa Italiana as to the suitability of the investment, if any, herein described.

© December 2017 Borsa Italiana S.p.A. All rights reserved.