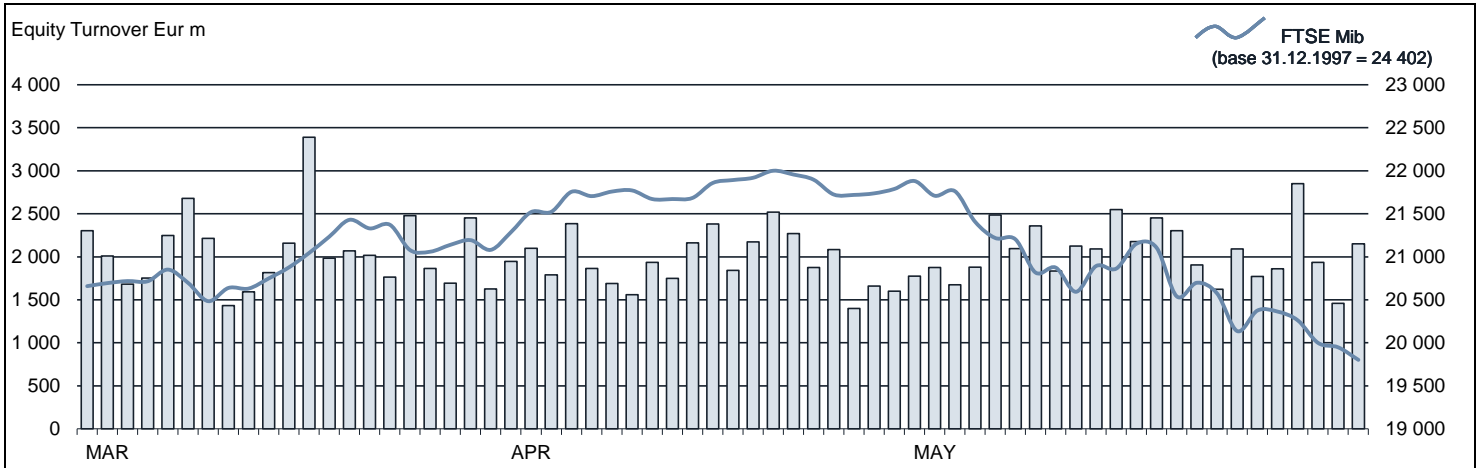




FTSE MIB Statistics

May 2019

EQUITY DAILY TURNOVER AND FTSE MIB EVOLUTION



FTSE MIB SHARES (BASKET UPDATED AS FROM 20.05.2019)

	PRICE (eur)			CAPITALISATION (eur m)		TURNOVER (eur m)	
	31 MAY 2019	Var % MoM	VAR % 2018 END	30 APR 2019	31 MAY 2019	MAY 2019	JAN-MAY 2019
A2A	1.4544	-1.9%	-7.6%	4 645.6	4 556.4	386.9	1 562.1
AMPLIFON	19.6826	14.5%	40.1%	3 890.1	4 455.9	348.7	1 139.3
ATLANTIA	22.3429	-7.5%	23.9%	19 953.4	18 450.4	655.3	3 084.5
AZIMUT HOLDING	14.8217	-17.8%	56.1%	2 583.4	2 123.3	898.3	3 238.1
BANCA GENERALI	22.4799	-11.1%	24.5%	2 953.8	2 626.8	293.2	1 098.1
BANCO BPM	1.6467	-22.3%	-16.2%	3 211.1	2 495.0	935.8	5 648.6
BPER BANCA	3.3727	-20.2%	0.9%	2 034.9	1 623.3	366.8	1 695.8
BUZZI UNICEM	17.4801	-11.3%	16.5%	3 258.4	2 890.3	322.9	1 273.3
CAMPARI	8.7087	-3.0%	18.1%	10 433.2	10 116.1	468.5	2 139.3
CNH INDUSTRIAL	7.7663	-19.9%	-1.0%	13 232.6	10 596.3	814.5	2 878.9
DIASORIN	91.3554	4.8%	29.4%	4 875.7	5 111.2	217.2	951.1
ENEL	5.5357	-1.3%	9.4%	57 035.8	56 279.5	3 435.9	15 687.6
ENI	13.5476	-10.7%	-1.3%	55 151.4	49 234.7	3 827.7	17 056.7
EXOR	56.0813	-5.8%	19.2%	14 342.8	13 515.6	538.3	2 187.5
FERRARI	126.6614	4.7%	46.3%	23 462.9	24 562.6	1 512.8	5 966.5
FIAT CHRYSLER AUTOMOBILES	11.4509	-7.7%	-0.2%	21 301.8	17 744.8	4 064.3	15 667.8
FINCOBANK	9.1914	-22.0%	5.2%	7 172.8	5 596.8	1 402.9	3 048.9
GENERALI	15.7129	-9.0%	7.7%	27 087.5	24 663.0	2 363.0	9 414.9
HERA	3.2346	2.1%	21.0%	4 720.7	4 818.0	185.8	1 234.8
INTESA SANPAOLO	1.8242	-21.8%	-6.1%	40 864.6	31 940.9	6 656.6	28 074.3
ITALGAS	5.6431	1.6%	13.1%	4 494.9	4 566.1	248.5	1 061.9
JUVENTUS FOOTBALL CLUB	1.4957	19.1%	38.1%	1 266.1	1 507.3	409.5	2 998.6
LEONARDO	9.8752	-4.4%	29.0%	5 972.0	5 709.4	669.4	2 940.6
MEDIOBANCA	8.2585	-12.8%	12.0%	8 399.0	7 327.1	615.0	3 140.6
MONCLER	32.8079	-10.4%	14.0%	9 443.6	8 462.7	683.6	3 841.0
PIRELLI & C	5.0962	-21.8%	-9.4%	6 516.4	5 096.2	347.6	1 482.2
POSTE ITALIANE	8.6992	-8.2%	24.8%	12 382.6	11 362.2	612.3	2 724.9
PRYSMIAN	14.9542	-12.3%	-11.1%	4 573.0	4 009.9	593.9	3 300.1
RECORDATI	36.9286	2.1%	20.4%	7 567.5	7 722.7	288.1	1 443.9
SAIPEM	3.8428	-15.6%	18.3%	4 603.7	3 884.9	615.2	3 913.7
SALVATORE FERRAGAMO	18.7191	-8.4%	4.6%	3 451.1	3 159.6	333.3	1 164.4
SNAM	4.5000	-0.6%	17.8%	15 364.8	15 276.7	954.3	4 527.8
STMICROELECTRONICS	13.5079	-17.2%	11.0%	14 861.7	12 308.1	1 763.5	7 958.8
TELECOM ITALIA	0.4390	-12.0%	-9.5%	7 585.1	6 674.3	1 041.9	6 026.9
TENARIS	10.5079	-15.5%	11.6%	14 675.9	12 405.0	797.9	4 102.6
TERNA	5.4535	2.0%	10.1%	10 744.9	10 961.6	882.9	3 677.1
UBI BANCA	2.2760	-18.1%	-10.1%	3 178.9	2 604.4	478.9	2 610.4
UNICREDIT	10.0815	-18.3%	2.6%	27 552.4	22 515.7	4 039.9	20 016.4
UNIPOL	4.1123	-8.7%	17.2%	3 232.8	2 950.4	248.2	1 426.2
UNIPOLSAI	2.1815	-10.6%	10.8%	6 903.9	6 172.9	249.4	1 216.9