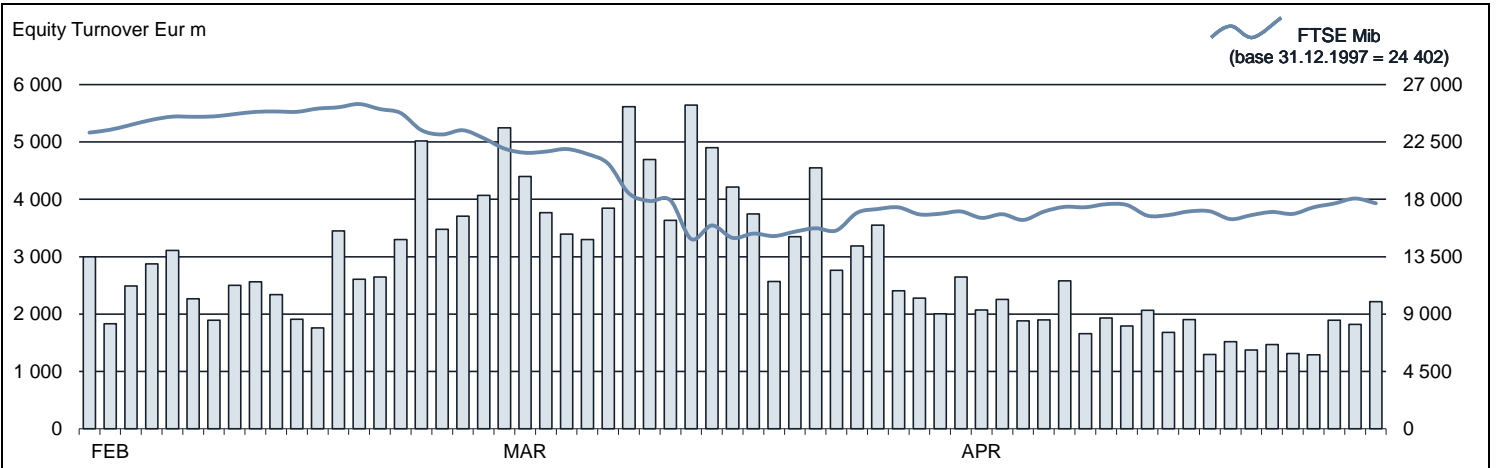




## FTSE MIB Statistics

April 2020

## EQUITY DAILY TURNOVER AND FTSE MIB EVOLUTION



## FTSE MIB SHARES (BASKET UPDATED AS FROM 23.03.2020)

	PRICE (eur)			CAPITALISATION (eur m)		TURNOVER (eur m)	
	30 APR 2020	Var % MoM	VAR % 2019 END	31 MAR 2020	30 APR 2020	APR 2020	JAN-APR 2020
A2A	1.2383	9.7%	-26.1%	3 535.7	3 879.6	316.4	1 745.2
AMPLIFON	21.0204	11.4%	-18.2%	4 271.8	4 758.8	299.6	1 908.8
ATLANTIA	14.9340	32.9%	-28.2%	9 282.1	12 332.3	643.7	3 610.8
AZIMUT HOLDING	15.8045	21.5%	-26.2%	1 863.3	2 264.1	619.1	3 821.2
BANCA GENERALI	22.8905	21.1%	-21.4%	2 209.4	2 674.8	202.8	1 203.1
BANCA MEDIOLANUM	5.7216	22.0%	-35.6%	3 473.4	4 238.3	200.4	984.4
BANCO BPM	1.1361	-5.3%	-44.0%	1 817.9	1 721.4	546.0	5 331.4
BPER BANCA	2.2966	-16.5%	-48.8%	1 432.2	1 195.7	184.5	1 588.2
BUZZI UNICEM	18.1206	9.7%	-19.2%	2 731.3	2 996.2	246.3	1 288.5
CAMPARI	7.0690	7.48%	-13.7%	7 639.7	8 211.4	262.1	2 117.6
CNH INDUSTRIAL	5.8442	13.1%	-40.7%	7 047.9	7 973.9	391.1	3 035.5
DIASORIN	155.3903	31.6%	34.1%	6 608.0	8 693.8	1 153.9	2 949.1
ENEL	6.2733	-2.1%	-11.6%	65 114.0	63 778.7	3 516.6	24 116.6
ENI	8.8342	-2.6%	-36.4%	32 949.2	32 105.1	4 225.3	21 353.9
EXOR	50.2309	5.2%	-27.8%	11 510.3	12 105.7	409.5	2 822.6
FERRARI	144.1364	2.6%	-3.3%	27 235.5	27 951.4	1 477.2	8 622.4
FIAT CHRYSLER AUTOMOBILES	8.1914	26.1%	-38.3%	10 065.2	12 693.7	1 375.4	10 251.8
FINCOBANK	10.1157	21.5%	-5.8%	5 073.5	6 165.9	653.9	3 696.1
GENERALI	13.0778	4.9%	-29.1%	19 569.4	20 611.3	1 580.5	8 272.6
HERA	3.3967	3.6%	-13.1%	4 883.8	5 059.5	204.8	1 394.4
INTESA SANPAOLO	1.4403	-2.2%	-38.9%	25 782.4	25 219.2	4 726.1	27 871.3
ITALGAS	5.0231	1.5%	-8.2%	4 003.7	4 064.3	228.5	1 465.6
LEONARDO	6.3725	5.6%	-39.4%	3 489.8	3 684.3	596.5	2 764.1
MEDIOBANCA	5.3612	6.4%	-45.6%	4 470.8	4 756.6	649.9	3 688.1
MONCLER	34.3889	2.7%	-14.4%	8 647.8	8 882.9	526.2	4 065.2
NEXI	13.7865	15.4%	11.6%	7 499.8	8 654.9	522.3	3 788.7
PIRELLI & C	3.6177	9.8%	-30.0%	3 295.9	3 617.7	289.3	1 978.8
POSTE ITALIANE	7.8668	0.3%	-22.6%	10 243.9	10 274.9	666.8	3 613.2
PRYSMIAN	17.1246	15.8%	-20.7%	3 965.5	4 591.9	449.2	2 847.0
RECORDATI	39.7545	3.2%	5.3%	8 057.6	8 313.7	334.8	1 588.8
SAIPEM	2.3657	4.0%	-45.9%	2 300.1	2 391.7	507.6	3 287.6
SALVATORE FERRAGAMO	11.4123	-6.7%	-39.2%	2 065.6	1 926.3	98.7	848.6
SNAM	4.1052	-1.9%	-12.4%	14 204.2	13 936.5	908.7	5 001.1
STMICROELECTRONICS	24.3542	23.4%	1.4%	17 990.3	22 191.7	1 590.4	10 683.0
TELECOM ITALIA	0.3671	-0.3%	-34.3%	5 598.9	5 580.7	627.7	4 109.6
TENARIS	6.4873	16.18%	-35.4%	6 592.0	7 658.5	426.2	3 441.2
TERNA	5.7452	-0.5%	-3.7%	11 606.8	11 547.7	602.4	3 626.7
UBI BANCA	2.6172	9.2%	-10.2%	2 743.4	2 994.8	307.9	3 530.8
UNICREDIT	7.1347	-0.7%	-45.4%	16 072.7	15 962.3	3 164.4	20 911.0
UNIPOL	3.1639	2.8%	-38.7%	2 208.5	2 270.0	176.9	1 128.0

## Markets Analysis

Piazza degli Affari, 6 - 20123 Milano  
T +39 02 724261 | Fax +39 02 8646.4323  
e-mail: markets\_analysis@borsaitaliana.it  
www.borsaitaliana.it

This document contains text, data, graphics, photographs, illustrations, artwork, names, logos, trade marks, service marks and information ("Information") connected with Borsa Italiana S.p.A. ("Borsa Italiana").

All reasonable efforts have been made to ensure that the Information in this document was correct at the time of publication. However, Borsa Italiana Spa accepts no liability for decisions taken, or systems-related or other work carried out by any party based on this document. The publication of this document does not represent solicitation, by Borsa Italiana, of public saving and is not to be considered as a recommendation by Borsa Italiana as to the suitability of the investment, if any, herein described.

© April 2020 Borsa Italiana S.p.A. All rights reserved.

