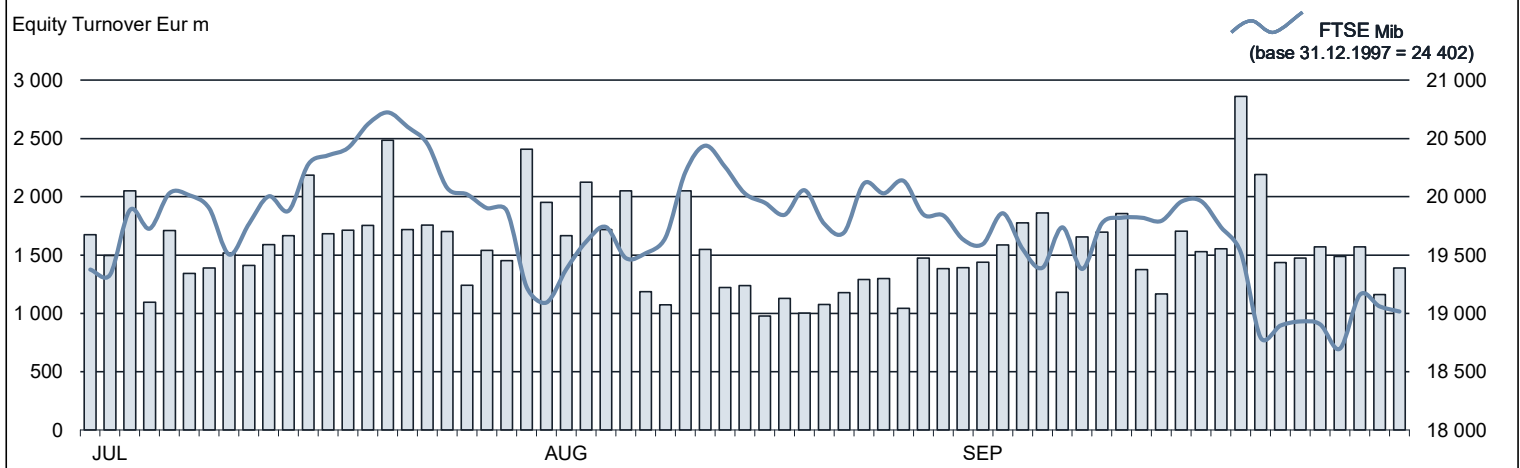




## EQUITY DAILY TURNOVER AND FTSE MIB EVOLUTION



## FTSE MIB SHARES (BASKET UPDATED AS FROM 21.09.2020)

	PRICE (eur)			CAPITALISATION (eur m)		TURNOVER (eur m)	
	30 SEP 2020	Var % MoM	VAR % 2019 END	30 SEP 2020	30 SEP 2020	SEP 2020	JAN-SEP 2020
A2A	1.2480	1.6%	-25.5%	3 850.0	3 909.9	254.1	3 208.1
AMPLIFON	30.7297	10.6%	19.7%	6 289.2	6 956.9	450.8	3 831.2
ATLANTIA	13.4290	-0.5%	-35.5%	11 139.8	11 089.4	718.3	7 250.8
AZIMUT HOLDING	15.4469	-5.4%	-27.9%	2 339.5	2 212.8	259.3	6 205.1
BANCA GENERALI	26.3003	2.6%	-9.7%	2 996.7	3 073.2	264.7	2 347.9
BANCA MEDIOLANUM	6.1525	-1.9%	-30.8%	4 649.6	4 560.9	175.7	1 987.4
BANCO BPM	1.4288	-0.2%	-29.6%	2 168.3	2 164.9	885.4	9 207.1
BPER BANCA	1.9441	-16.7%	-56.7%	1 218.5	1 014.6	195.6	2 923.8
BUZZI UNICEM	19.8241	-4.0%	-11.6%	3 415.5	3 277.9	205.7	2 559.1
CAMPARI	9.3099	8.4%	13.7%	9 975.0	10 814.4	412.5	4 021.7
CNH INDUSTRIAL	6.6365	-1.2%	-32.7%	9 164.4	9 054.8	669.9	6 144.2
DIASORIN	172.0287	14.0%	48.4%	8 444.7	9 624.7	733.4	8 334.9
ENEL	7.4480	-2.3%	4.9%	77 477.8	75 721.3	3 393.1	43 820.6
ENI	6.7043	-15.1%	-51.8%	28 699.4	24 364.8	2 438.7	36 109.2
EXOR	46.6763	-6.7%	-32.9%	12 056.3	11 249.0	465.3	4 841.4
FERRARI	156.3825	-4.5%	4.9%	31 749.1	30 326.2	1 134.4	15 021.7
FIAT CHRYSLER AUTOMOBILES	10.4081	11.0%	-21.6%	14 528.7	16 128.8	2 664.0	20 566.5
FINCOBANK	11.7388	-8.0%	9.3%	7 777.2	7 155.5	683.3	7 347.6
GENERALI	12.0195	-8.2%	-34.9%	20 644.4	18 943.3	1 188.3	15 159.7
HERA	3.1655	-1.1%	-19.0%	4 767.5	4 715.2	187.5	2 447.2
INTERPUMP GROUP	31.7001	8.0%	12.3%	3 195.4	3 451.5	183.6	1 512.3
INTESA SANPAOLO	1.6076	-11.6%	-31.8%	35 031.3	31 209.5	4 196.8	51 883.5
INWIT	9.4412	14.9%	14.5%	7 889.2	9 065.4	402.3	2 666.4
ITALGAS	5.4063	-0.4%	-1.2%	4 390.1	4 374.4	186.9	2 742.5
LEONARDO	4.9957	-13.4%	-52.5%	3 333.3	2 888.2	764.9	6 220.5
MEDIOBANCA	6.6895	-10.0%	-32.1%	6 595.5	5 935.2	697.5	8 761.7
MONCLER	34.9137	6.9%	-13.1%	8 437.8	9 020.0	659.9	7 069.7
NEXI	17.1028	14.6%	38.4%	9 367.0	10 736.7	791.7	7 935.3
PIRELLI & C	3.6620	0.2%	-29.1%	3 653.5	3 662.0	229.7	3 214.6
POSTE ITALIANE	7.5826	-2.3%	-25.4%	10 132.8	9 903.8	463.1	6 672.3
PRYSMIAN	24.8432	5.1%	15.0%	6 335.8	6 661.6	514.6	5 336.8
RECORDATI	43.9629	-3.9%	16.5%	9 565.4	9 193.7	269.9	3 467.1
SAIPEM	1.4563	-20.1%	-66.7%	1 843.6	1 472.3	571.0	6 252.9
SNAM	4.4144	2.4%	-5.8%	14 492.8	14 836.1	756.2	9 045.5
STMICROELECTRONICS	26.0397	2.8%	8.4%	23 091.4	23 727.5	2 208.8	19 701.3
TELECOM ITALIA	0.3422	-15.7%	-38.7%	6 174.7	5 202.5	825.4	8 668.7
TENARIS	4.2473	-14.5%	-57.7%	5 861.6	5 014.1	481.1	5 929.2
TERNA	5.9922	-1.6%	0.4%	12 238.2	12 044.3	572.3	6 891.4
UNICREDIT	7.0638	-15.8%	-45.9%	18 761.4	15 803.6	3 195.6	39 282.8
UNIPOL	3.7213	-9.4%	-27.9%	2 946.9	2 669.9	182.0	2 278.6